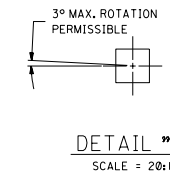
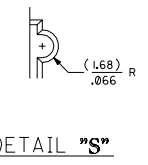
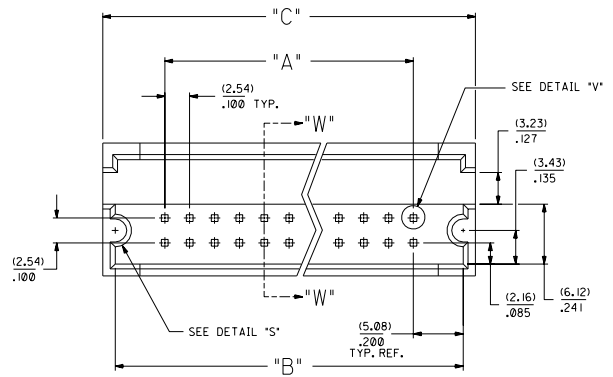
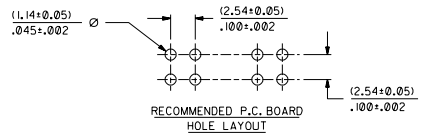
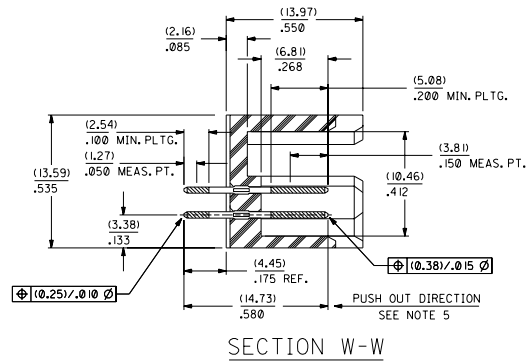


CKT. SIZE	PART NUMBER	ENG. NUMBER	DIM. "A"		DIM. "B"		DIM. "C"	
			MM	IN.	MM	IN.	MM	IN.
	VOIDED	0833						
	VOIDED	0834						
08	25-02-4008	0835	7.62	.300	17.78	.700	20.32	.800
10	25-02-4010	0836	10.16	.400	20.32	.800	22.86	.900
12	25-02-4012	0837	12.70	.500	22.86	.900	25.40	1.000
14	25-02-4014	0838	15.24	.600	25.40	1.000	32.51	1.100
16	25-02-4016	0839	17.78	.700	27.94	1.100	30.48	1.200
18	25-02-4018	0840	20.32	.800	30.48	1.200	33.02	1.300
20	25-02-4020	0841	22.86	.900	33.02	1.300	35.56	1.400
22	25-02-4022	0842	25.40	1.000	35.56	1.400	38.10	1.500
24	25-02-4024	0843	27.94	1.100	38.10	1.500	40.64	1.600
26	25-02-4026	0844	30.48	1.200	40.64	1.600	43.10	1.700
28	25-02-4028	0845	33.02	1.300	43.10	1.700	45.72	1.800
30	25-02-4030	0846	35.56	1.400	45.72	1.800	48.26	1.900
32	25-02-4032	0847	38.10	1.500	48.26	1.900	50.80	2.000
34	25-02-4034	0848	40.64	1.600	50.80	2.000	53.34	2.100
36	25-02-4036	0849	43.10	1.700	53.34	2.100	55.88	2.200
38	25-02-4038	0850	45.72	1.800	55.88	2.200	58.42	2.300
40	25-02-4040	0851	48.26	1.900	58.42	2.300	60.96	2.400
42	25-02-4042	0852	50.80	2.000	60.96	2.400	63.50	2.500
44	25-02-4044	0853	53.34	2.100	63.50	2.500	66.04	2.600
46	25-02-4046	0854	55.88	2.200	66.04	2.600	68.58	2.700
48	25-02-4048	0855	58.42	2.300	68.58	2.700	71.12	2.800
50	25-02-4050	0856	60.96	2.400	71.12	2.800	73.66	2.900
52	25-02-4052	0857	63.50	2.500	73.66	2.900	76.20	3.000
54	25-02-4054	0858	66.04	2.600	76.20	3.000	78.74	3.100
56	25-02-4056	0859	68.58	2.700	78.74	3.100	81.28	3.200
58	25-02-4058	0860	71.12	2.800	81.28	3.200	83.82	3.300
60	25-02-4060	0861	73.66	2.900	83.82	3.300	86.36	3.400
62	25-02-4062	0862	76.20	3.000	86.36	3.400	88.90	3.500
64	25-02-4064	0863	78.74	3.100	88.90	3.500	91.44	3.600
66	25-02-4066	0864	81.28	3.200	91.44	3.600	93.98	3.700
68	25-02-4068	0865	83.82	3.300	93.98	3.700	96.52	3.800
70	25-02-4070	0866	86.36	3.400	96.52	3.800	99.06	3.900
72	25-02-4072	0867	88.90	3.500	99.06	3.900	101.60	4.000
74	25-02-4074	0868	91.44	3.600	101.60	4.000	104.14	4.100
76	25-02-4076	0869	93.98	3.700	104.14	4.100	106.68	4.200
78	25-02-4078	0870	96.52	3.800	106.68	4.200	109.22	4.300
80	25-02-4080	0871	99.06	3.900	109.22	4.300	111.76	4.400
82	25-02-4082	0872	101.60	4.000	111.76	4.400	114.30	4.500
84	25-02-4084	0873	104.14	4.100	114.30	4.500	116.84	4.600
86	25-02-4086	0874	106.68	4.200	116.84	4.600	119.38	4.700
88	25-02-4088	0875	109.22	4.300	119.38	4.700	121.92	4.800
90	25-02-4090	0876	111.76	4.400	121.92	4.800	124.46	4.900
92	25-02-4092	0877	114.30	4.500	124.46	4.900	127.00	5.000
94	25-02-4094	0878	116.84	4.600	127.00	5.000	129.54	5.100
96	25-02-4096	0879	119.38	4.700	129.54	5.100	132.08	5.200
98	25-02-4098	0880	121.92	4.800	132.08	5.200	134.62	5.300
100	25-02-4100	0881	124.46	4.900	134.62	5.300	137.16	5.400
102	25-02-4102	0882	127.00	5.000	137.16	5.400	139.70	5.500
104	25-02-4104	0883	129.54	5.100	139.70	5.500	142.24	5.600
106	25-02-4106	0884	134.62	5.200	142.24	5.600	144.78	5.700
108	25-02-4108	0885	134.62	5.200	144.78	5.700	147.32	5.800
110	25-02-4110	0886	137.16	5.300	147.32	5.800	149.86	5.900
112	25-02-4112	0887	139.70	5.500	149.86	5.900	152.40	6.000
114	25-02-4114	0888	142.24	5.600	152.40	6.000	154.94	6.100
116	25-02-4116	0889	144.78	5.700	154.94	6.100	157.48	6.200
118	25-02-4118	0890	147.32	5.800	157.48	6.200	160.02	6.300
120	25-02-4120	0891	149.86	5.900	160.02	6.300	162.56	6.400
122	25-02-4122	0892	152.40	6.000	162.56	6.400	165.10	6.500
124	25-02-4124	0893	154.94	6.100	165.10	6.500	167.64	6.600
126	25-02-4126	0894	157.48	6.200	167.64	6.600	170.18	6.700
128	25-02-4128	0895	160.02	6.300	170.18	6.700	172.72	6.800
130	25-02-4130	0896	162.56	6.400	172.72	6.800	175.26	6.900

NOTES:

- 1) WAFER MATERIAL: GLASS FILLED NYLON COLOR, BLACK.
- 2) PIN MATERIAL: PHOSPHOR BRONZE ALLOY
- 3) PIN PLATING:
TIP: .000030 MINIMUM GOLD IN SELECTED AREA
TAIL: .000075 MINIMUM TIN IN SELECTED AREA
OVER .000050 NICKEL OVER-ALL.
- *THE PRIMARY SHIPPING CARTON WILL BE LABELED "COMPLIANT TO ROHS DIRECTIVE 2002/95/EC AND ELV ANNEX II OF DIRECTIVE 2000/53/EC". CARTONS WITHOUT THIS LABEL MAY CONTAIN PRODUCT WITH LEAD.
- 4) PINS MUST MEET SOLDERABILITY SPEC. NO. 152.
- 5) PIN PUSH-OUT FORCE (1.81 KG.) / 4 LBS MIN.
- 6) REFER TO P.S. NO. 70204.
- 7) STANDARD PACKAGING PER: PK-70873-0070.



DIMENSIONS SHOWN METRIC INCH		MFG. SH. REV. LTR.		REVISIONS	
1 INCH = 25.4 MILLIMETERS		1			
1 MILLIMETER = 0.03937 INCHES		REVISE ONLY ON CAD SYSTEM			
DUAL ROW HEADER-FULLY SHROUDED W/P.C.B. SLOTS AND GUIDE EARS .100 GRID W/(0.64)/.025 SQ. PIN		DATE			
MOLEX INCORPORATED		SHEET NO.		1	
PART NO. 0896		DATE		5/20/86	
SEE CHART		SDA-70204-0833-0896			
SCALE 4:1		EIK			