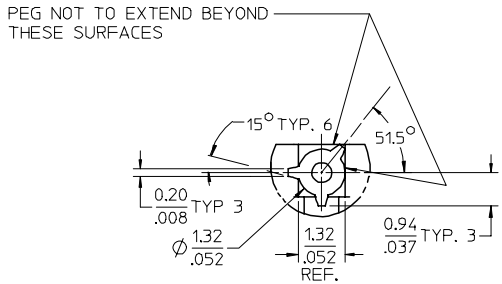
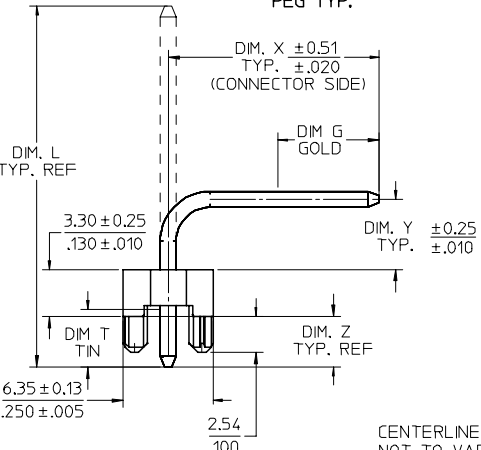


13 12 11 10 9 8 7 6 5 4 3 2 1

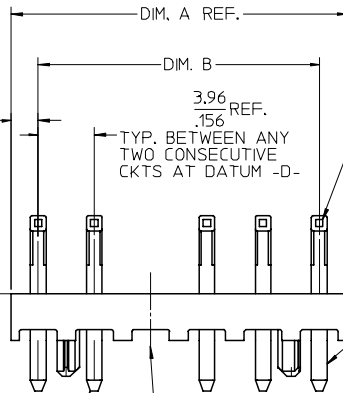


DETAIL "Z"
SCALE 10:1
PEG TYP.

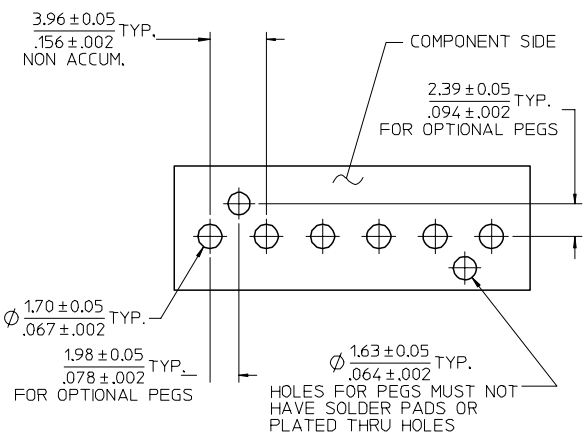


CENTERLINE OF PIN AT TIP NOT TO VARY FROM CENTERLINE OF PIN AT DATUM -D- BY MORE THAN 0.13/.005 IN EITHER DIRECTION

VOIDED CKT. SEE CHART FOR LOCATION

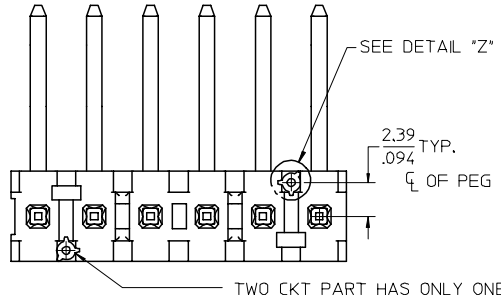


CENTERLINE OF PIN AT TIP NOT TO VARY FROM CENTERLINE OF PIN AT DATUM -D- BY MORE THAN 0.20/.008 IN EITHER DIRECTION



RECOMMENDED PC BOARD HOLE LAYOUT

FOR CORRECT ORIENTATION OF PARTS WITH VOIDS, ELIMINATE CORRESPONDING PCB HOLE.



- NOTES:
- MATERIAL: GLASS FILLED POLYESTER, 94V-0, MOLDED NATURAL (WHITE).
 - FINISH: (102) OVERALL TIN: (0.00508)/.000200 MIN. OVER COPPER UNDERPLATE; (0.00254)/.000100 MIN. (208) SELECT GOLD: (0.00038)/.000015 MIN. *SELECT TIN: (0.00254)/.000100 MIN. OVERALL NICKEL UNDERPLATE: (0.00127)/.000050 MIN. (228) SELECT GOLD: (0.00076)/.000030 MIN. *SELECT TIN: (0.00254)/.000100 MIN. OVERALL NICKEL UNDERPLATE: (0.00127)/.000050 MIN. (501) OVERALL GOLD: (0.00051)/.000020 MIN. OVER NICKEL UNDERPLATE: (0.00076)/.000030 MIN.
 - THE PRIMARY SHIPPING CARTON WILL BE LABELED "COMPLIANT TO RoHS DIRECTIVE 2002/95/EC AND ELV ANNEX II OF DIRECTIVE 2000/53/EC". CARTONS WITHOUT THIS LABEL MAY CONTAIN PRODUCT WITH TIN/LEAD PLATINGS.
 - PRODUCT SPECIFICATION: PS-08-50
 - PACKAGING SPECIFICATION: SEE CHARTS
 - PARTS ARE STACKABLE END TO END ON (3.96)/.156 CENTERS.
 - FOR PARTS WITHOUT PEGS, SEE DRAWING SDA-41772.
 - EXPANSION SLOTS TO BE THRU-SLOTS, AS SHOWN, FOR 4 THRU 18 CKT. PARTS.
 - SOLDERABILITY: WHEN PARTS ARE SOLDERED AT A TEMPERATURE OF (230 C) OR 446 F FOR 5 SECONDS, EACH SOLDERED SURFACE SHALL BE A MINIMUM OF 95% COVERED WITH A SMOOTH CONTINUOUS ADHERENT COATING. FOR OTHER INFORMATION SEE SMES-152.
 - PIN PUSH OUT FORCE: PRIOR TO SOLDERING, A 3 POUND MINIMUM FORCE (IN EITHER DIRECTION) SHALL BE REQUIRED TO PUSH THE PIN OUT OF THE HEADER.
 - 6 CIRCUIT PART SHOWN.
 - THIS PART CONFORMS TO CLASS B REQUIREMENTS OF COSMETIC SPECIFICATION PS-45499-002.

NO. OF CKTS.	DIM. A	DIM. B	NO. OF PEGS
2	7.77 .306	3.96±0.05 .156±.002	1
3	11.73 .462	7.92±0.08 .312±.003	2
4	15.70 .618	11.89±0.08 .468±.003	2
5	19.66 .774	15.85±0.10 .624±.004	2
6	23.62 .930	19.81±0.10 .780±.004	2
7	27.58 1.086	23.77±0.10 .936±.004	2
8	31.55 1.242	27.74±0.13 1.092±.005	2
9	35.51 1.398	31.70±0.13 1.248±.005	2
10	39.47 1.554	35.66±0.13 1.404±.005	2
11	43.43 1.710	39.62±0.15 1.560±.006	2
12	47.40 1.866	43.59±0.15 1.716±.006	2
13	51.36 2.022	47.55±0.15 1.872±.006	2
14	55.32 2.178	51.51±0.18 2.028±.007	2
15	59.28 2.334	55.47±0.18 2.184±.007	2
16	63.25 2.490	59.44±0.18 2.340±.007	2
17	67.21 2.646	63.40±0.20 2.496±.008	2
18	71.17 2.802	67.36±0.20 2.652±.008	2

UPDATE NOTES	FC NO: UCP2007-2132	2007/03/21
DRAWN/PRI/DER	2007/03/21	
CHKD:ADRR	2007/03/27	
APPR:FSM/TH	2007/03/28	
DESCRIPTION		

QUALITY SYMBOLS	GENERAL TOLERANCES (UNLESS SPECIFIED)
▽=0	mm INCH
▽=0	4 PLACES ± --- ± ---
	3 PLACES ± --- ± ---
	2 PLACES ± --- ± ---
	1 PLACE ± --- ± ---
	ANGULAR ±1/2°

DIMENSION STYLE		SCALE	DESIGN UNITS	THIRD ANGLE PROJECTION
MM/IN		4:1	INCH	⊙
DRAWN BY	DATE	TITLE		
SAMIEC	1988/08/19	FLAT HEADER ASSY		
CHECKED BY	DATE	BENT SQ PINS, W/ PEGS		
PATEL	1988/08/19			
APPROVED BY	DATE			
LENZ	1988/08/19			
MATERIAL NO.	DOCUMENT NO.			
SEE CHART	SD-42472-001			

MOLEX	MOLEX INCORPORATED	SHEET NO.
		1 OF *
THIS DRAWING CONTAINS INFORMATION THAT IS PROPRIETARY TO MOLEX INCORPORATED AND SHOULD NOT BE USED WITHOUT WRITTEN PERMISSION		

12 11 10 9 8 7 6 5 4 3 2 1

ENG. NO: A-42472-0002/0018			ENG. NO: A-42472-0265/0281			ENG. NO: A-42472-0282/0298			ENG. NO: A-42472-0036/0052		
HEADER NUMBER	41770-0019/0035		HEADER NUMBER	41770-0019/0035		HEADER NUMBER	41770-0019/0035		HEADER NUMBER	41770-0019/0035	
PIN NUMBER	2161-16(102)		PIN NUMBER	43294-0470		PIN NUMBER	43294-0471		PIN NUMBER	2161-52(102)	
PLATING	102		PLATING	208		PLATING	228		PLATING	102	
DIM. L	(25.40)/1.000		DIM. L	(25.40)/1.000		DIM. L	(25.40)/1.000		DIM. L	(27.00)/1.063	
DIM. X	(14.86)/.585		DIM. X	(14.86)/.585		DIM. X	(14.86)/.585		DIM. X	(16.51)/.650	
DIM. G (GOLD)	N/A		DIM. G (GOLD)	(7.11)/.280		DIM. G (GOLD)	(7.11)/.280		DIM. G (GOLD)	N/A	
DIM. Y	(4.95)/.195		DIM. Y	(4.95)/.195		DIM. Y	(4.95)/.195		DIM. Y	(4.95)/.195	
DIM. Z	(3.56)/.140		DIM. Z	(3.56)/.140		DIM. Z	(3.56)/.140		DIM. Z	(3.51)/.138	
DIM. T (TIN)	OVERALL		DIM. T (TIN)	(4.06)/.160		DIM. T (TIN)	(4.06)/.160		DIM. T (TIN)	OVERALL	
ANGLE W	90°		ANGLE W	90°		ANGLE W	90°		ANGLE W	90°	
VOID CKTS	NONE		VOID CKTS	NONE		VOID CKTS	NONE		VOID CKTS	NONE	
PACKAGING	PK-42472-002 (BULK)		PACKAGING	PK-42472-002 (BULK)		PACKAGING	PK-42472-002 (BULK)		PACKAGING	PK-42472-002 (BULK)	
CKTS	EDP NO.	ENG. NO.	CKTS	EDP NO.	ENG. NO.	CKTS	EDP NO.	ENG. NO.	CKTS	EDP NO.	ENG. NO.
02	26-64-3020	A-42472-0002	02	42472-0265	A-42472-0265	02	42472-0282	A-42472-0282	02		A-42472-0036
03	26-64-3030	A-42472-0003	03	42472-0266	A-42472-0266	03	42472-0283	A-42472-0283	03		A-42472-0037
04	26-64-3040	A-42472-0004	04	42472-0267	A-42472-0267	04	42472-0284	A-42472-0284	04		A-42472-0038
05	26-64-3050	A-42472-0005	05	42472-0268	A-42472-0268	05	42472-0285	A-42472-0285	05		A-42472-0039
06	26-64-3060	A-42472-0006	06	42472-0269	A-42472-0269	06	42472-0286	A-42472-0286	06	26-64-3061	A-42472-0040
07	26-64-3070	A-42472-0007	07	42472-0270	A-42472-0270	07	42472-0287	A-42472-0287	07		A-42472-0041
08	26-64-3080	A-42472-0008	08	42472-0271	A-42472-0271	08	42472-0288	A-42472-0288	08		A-42472-0042
09	26-64-3090	A-42472-0009	09	42472-0272	A-42472-0272	09	42472-0289	A-42472-0289	09		A-42472-0043
10	26-64-3100	A-42472-0010	10	42472-0273	A-42472-0273	10	42472-0290	A-42472-0290	10	26-64-3101	A-42472-0044
11	26-64-3110	A-42472-0011	11	42472-0274	A-42472-0274	11	42472-0291	A-42472-0291	11		A-42472-0045
12	26-64-3120	A-42472-0012	12	42472-0275	A-42472-0275	12	42472-0292	A-42472-0292	12		A-42472-0046
13	26-64-3130	A-42472-0013	13	42472-0276	A-42472-0276	13	42472-0293	A-42472-0293	13		A-42472-0047
14	26-64-3140	A-42472-0014	14	42472-0277	A-42472-0277	14	42472-0294	A-42472-0294	14		A-42472-0048
15	26-64-3150	A-42472-0015	15	42472-0278	A-42472-0278	15	42472-0295	A-42472-0295	15		A-42472-0049
16	26-64-3160	A-42472-0016	16	42472-0279	A-42472-0279	16	42472-0296	A-42472-0296	16		A-42472-0050
17	26-64-3170	A-42472-0017	17	42472-0280	A-42472-0280	17	42472-0297	A-42472-0297	17		A-42472-0051
18	26-64-3180	A-42472-0018	18	42472-0281	A-42472-0281	18	42472-0298	A-42472-0298	18		A-42472-0052

REV: 1	ECR/ECN INFORMATION EC No: UCP2007-0341 DATE: 2006-08-07	TITLE: FLAT HEADER ASSEMBLY (3.96)/.156 CENTERS BENT SQ PINS, W/ PEGS	SHEET No. - 2 -	
DOCUMENT NUMBER: SD-42472-001		CREATED / REVISED BY: PRIDDER	CHECKED BY: ADERR	APPROVED BY: FSMITH

ENG. NO: A-42472-0299/0315			ENG. NO: A-42472-0316/0332			ENG. NO: A-42472-0019/0035			ENG. NO: A-42472-0053/0069		
HEADER NUMBER		41770-0019/0035	HEADER NUMBER		41770-0019/0035	HEADER NUMBER		41770-0019/0035	HEADER NUMBER		41770-0019/0035
PIN NUMBER		43294-0524	PIN NUMBER		43294-0525	PIN NUMBER		2161-16(501)	PIN NUMBER		2161-52(501)
PLATING		208	PLATING		228	PLATING		501	PLATING		501
DIM. L		(26.92)/1.060	DIM. L		(26.92)/1.060	DIM. L		(25.40)/1.000	DIM. L		(27.00)/1.063
DIM. X		(16.51)/.650	DIM. X		(16.51)/.650	DIM. X		(14.86)/.585	DIM. X		(16.51)/.650
DIM. G (GOLD)		(8.77)/.345	DIM. G (GOLD)		(8.77)/.345	DIM. G (GOLD)		OVERALL	DIM. G (GOLD)		OVERALL
DIM. Y		(4.95)/.195	DIM. Y		(4.95)/.195	DIM. Y		(4.95)/.195	DIM. Y		(4.95)/.195
DIM. Z		(3.43)/.135	DIM. Z		(3.43)/.135	DIM. Z		(3.56)/.140	DIM. Z		(3.56)/.138
DIM. T (TIN)		(5.08)/.200	DIM. T (TIN)		(5.08)/.200	DIM. T (TIN)		N/A	DIM. T (TIN)		N/A
ANGLE W		90°	ANGLE W		90°	ANGLE W		90°	ANGLE W		90°
VOID CKTS		NONE	VOID CKTS		NONE	VOID CKTS		NONE	VOID CKTS		NONE
PACKAGING		PK-42472-002 (BULK)	PACKAGING		PK-42472-002 (BULK)	PACKAGING		PK-42472-002 (BULK)	PACKAGING		PK-42472-002 (BULK)
CKTS	EDP NO.	ENG. NO.	CKTS	EDP NO.	ENG. NO.	CKTS	EDP NO.	ENG. NO.	CKTS	EDP NO.	ENG. NO.
02	42472-0299	A-42472-0299	02	42472-0316	A-42472-0316	02	26-65-3020	A-42472-0019	02		A-42472-0053
03	42472-0300	A-42472-0300	03	42472-0317	A-42472-0317	03	26-65-3030	A-42472-0020	03		A-42472-0054
04	42472-0301	A-42472-0301	04	42472-0318	A-42472-0318	04	26-65-3040	A-42472-0021	04		A-42472-0055
05	42472-0302	A-42472-0302	05	42472-0319	A-42472-0319	05	26-65-3050	A-42472-0022	05		A-42472-0056
06	42472-0303	A-42472-0303	06	42472-0320	A-42472-0320	06	26-65-3060	A-42472-0023	06		A-42472-0057
07	42472-0304	A-42472-0304	07	42472-0321	A-42472-0321	07	26-65-3070	A-42472-0024	07		A-42472-0058
08	42472-0305	A-42472-0305	08	42472-0322	A-42472-0322	08	26-65-3080	A-42472-0025	08		A-42472-0059
09	42472-0306	A-42472-0306	09	42472-0323	A-42472-0323	09	26-65-3090	A-42472-0026	09		A-42472-0060
10	42472-0307	A-42472-0307	10	42472-0324	A-42472-0324	10	26-65-3100	A-42472-0027	10		A-42472-0061
11	42472-0308	A-42472-0308	11	42472-0325	A-42472-0325	11	26-65-3110	A-42472-0028	11		A-42472-0062
12	42472-0309	A-42472-0309	12	42472-0326	A-42472-0326	12	26-65-3120	A-42472-0029	12		A-42472-0063
13	42472-0310	A-42472-0310	13	42472-0327	A-42472-0327	13	26-65-3130	A-42472-0030	13		A-42472-0064
14	42472-0311	A-42472-0311	14	42472-0328	A-42472-0328	14	26-65-3140	A-42472-0031	14		A-42472-0065
15	42472-0312	A-42472-0312	15	42472-0329	A-42472-0329	15	26-65-3150	A-42472-0032	15		A-42472-0066
16	42472-0313	A-42472-0313	16	42472-0330	A-42472-0330	16	26-65-3160	A-42472-0033	16		A-42472-0067
17	42472-0314	A-42472-0314	17	42472-0331	A-42472-0331	17	26-65-3170	A-42472-0034	17		A-42472-0068
18	42472-0315	A-42472-0315	18	42472-0332	A-42472-0332	18	26-65-3180	A-42472-0035	18		A-42472-0069

REV: I	<u>ECR/ECN INFORMATION</u>		<u>TITLE:</u> FLAT HEADER ASSEMBLY (3.96)/.156 CENTERS BENT SQ PINS, W/ PEGS	<u>SHEET No.</u>
	EC No: UCP2007-0341			- 3 -
	DATE: 2006-08-07			
<u>DOCUMENT NUMBER:</u> SD-42472-001		<u>CREATED / REVISED BY:</u> PRIDDER	<u>CHECKED BY:</u> ADERR	<u>APPROVED BY:</u> FSMITH

ENG. NO: A-42472-0155/0171			ENG. NO: A-42472-0189/0200			ENG. NO: A-42472-0201/0217			ENG. NO: A-42472-0218/0234		
HEADER NUMBER	41770-0019/0035	HEADER NUMBER	41770-0019/0035	HEADER NUMBER	41770-0019/0035	HEADER NUMBER	41770-0019/0035				
PIN NUMBER	2161-16(102)	PIN NUMBER	2161-16(102)	PIN NUMBER	2161-23(102)	PIN NUMBER	2161-62 (102)				
PLATING	102	PLATING	102	PLATING	102	PLATING	102				
DIM. L	(25.40)/1.000	DIM. L	(25.40)/1.000	DIM. L	(31.24)/1.230	DIM. L	(24.89)/.980				
DIM. X	(14.86)/.585	DIM. X	(14.86)/.585	DIM. X	(20.70)/.815	DIM. X	(14.86)/.585				
DIM. G (GOLD)	N/A	DIM. G (GOLD)	N/A	DIM. G (GOLD)	N/A	DIM. G (GOLD)	N/A				
DIM. Y	(4.95)/.195	DIM. Y	(4.95)/.195	DIM. Y	(4.95)/.195	DIM. Y	(4.45)/.175				
DIM. Z	(3.56)/.140	DIM. Z	(3.56)/.140	DIM. Z	(3.56)/.140	DIM. Z	(3.56)/.140				
DIM. T (TIN)	OVERALL	DIM. T (TIN)	OVERALL	DIM. T (TIN)	OVERALL	DIM. T (TIN)	OVERALL				
ANGLE W	90°	ANGLE W	90°	ANGLE W	90°	ANGLE W	90°				
VOID CKTS	2	VOID CKTS	7	VOID CKTS		VOID CKTS					
PACKAGING	PK-42472-002 (BULK)	PACKAGING	PK-42472-002 (BULK)	PACKAGING	PK-42472-002 (BULK)	PACKAGING	PK-42472-002 (BULK)				
CKTS	EDP NO.	ENG. NO.	CKTS	EDP NO.	ENG. NO.	CKTS	EDP NO.	ENG. NO.			
02			02			02		A-42472-0201			
03	26-62-3030	A-42472-0156	03			03		A-42472-0202			
04	26-62-3040	A-42472-0157	04			04		A-42472-0203			
05	26-62-3050	A-42472-0158	05			05		A-42472-0204			
06	26-62-3060	A-42472-0159	06			06		A-42472-0205			
07	26-62-3070	A-42472-0160	07		A-42472-0189	07		A-42472-0206			
08	26-62-3080	A-42472-0161	08		A-42472-0190	08		A-42472-0207			
09	26-62-3090	A-42472-0162	09		A-42472-0191	09		A-42472-0208			
10	26-62-3100	A-42472-0163	10	26-62-3106	A-42472-0192	10		A-42472-0209			
11	26-62-3110	A-42472-0164	11		A-42472-0193	11		A-42472-0210			
12	26-62-3120	A-42472-0165	12		A-42472-0194	12		A-42472-0211			
13	26-62-3130	A-42472-0166	13		A-42472-0195	13		A-42472-0212			
14	26-62-3140	A-42472-0167	14		A-42472-0196	14		A-42472-0213			
15	26-62-3150	A-42472-0168	15		A-42472-0197	15	26-62-3157	A-42472-0214			
16	26-62-3160	A-42472-0169	16		A-42472-0198	16		A-42472-0215			
17	26-62-3170	A-42472-0170	17		A-42472-0199	17		A-42472-0216			
18	26-62-3180	A-42472-0171	18		A-42472-0200	18		A-42472-0217			

REV: I	ECR/ECN INFORMATION EC No: UCP2007-0341 DATE: 2006-08-07	TITLE: FLAT HEADER ASSEMBLY (3.96)/.156 CENTERS BENT SQ PINS, W/ PEGS	SHEET No. - 4 -
<u>DOCUMENT NUMBER:</u> SD-42472-001		<u>CREATED / REVISED BY:</u> PRIDDER	<u>CHECKED BY:</u> ADERR
		<u>APPROVED BY:</u> FSMITH	

42472

ENG. NO: A-42472-0235/0248				ENG. NO: A-42472-0249/0264				ENG. NO:				ENG. NO:			
HEADER NUMBER		41770-0022/0035		HEADER NUMBER		41770-0020/0035		HEADER NUMBER				HEADER NUMBER			
PIN NUMBER		2161-16(501)		PIN NUMBER		2161-16(102)		PIN NUMBER				PIN NUMBER			
PLATING		501		PLATING		102		PLATING				PLATING			
DIM. L		(25.40)/1.000		DIM. L		(25.40)/1.000		DIM. L				DIM. L			
DIM. X		(14.86)/.585		DIM. X		(14.86)/.585		DIM. X				DIM. X			
DIM. G (GOLD)		OVERALL		DIM. G (GOLD)		N/A		DIM. G (GOLD)				DIM. G (GOLD)			
DIM. Y		(4.95)/.195		DIM. Y		(4.95)/.195		DIM. Y				DIM. Y			
DIM. Z		(3.56)/.140		DIM. Z		(3.56)/.140		DIM. Z				DIM. Z			
DIM. T (TIN)		N/A		DIM. T (TIN)		OVERALL		DIM. T (TIN)				DIM. T (TIN)			
ANGLE W		90°		ANGLE W		90°		ANGLE W				ANGLE W			
VOID CKTS		5		VOID CKTS		3		VOID CKTS				VOID CKTS			
PACKAGING		PK-42472-002 (BULK)		PACKAGING		PK-42472-002 (BULK)		PACKAGING				PACKAGING			
CKTS	EDP NO.	ENG. NO.		CKTS	EDP NO.	ENG. NO.		CKTS	EDP NO.	ENG. NO.		CKTS	EDP NO.	ENG. NO.	
02				02				02				02			
03				03	42472-0249	A-42472-0249		03				03			
04				04	42472-0250	A-42472-0250		04				04			
05	42472-0235	A-42472-0235		05	42472-0251	A-42472-0251		05				05			
06	42472-0236	A-42472-0236		06	42472-0252	A-42472-0252		06				06			
07	42472-0237	A-42472-0237		07	42472-0253	A-42472-0253		07				07			
08	42472-0238	A-42472-0238		08	42472-0254	A-42472-0254		08				08			
09	42472-0239	A-42472-0239		09	42472-0255	A-42472-0255		09				09			
10	42472-0240	A-42472-0240		10	42472-0256	A-42472-0256		10				10			
11	42472-0241	A-42472-0241		11	42472-0257	A-42472-0257		11				11			
12	42472-0242	A-42472-0242		12	42472-0258	A-42472-0258		12				12			
13	42472-0243	A-42472-0243		13	42472-0259	A-42472-0259		13				13			
14	42472-0244	A-42472-0244		14	42472-0260	A-42472-0260		14				14			
15	42472-0245	A-42472-0245		15	42472-0261	A-42472-0261		15				15			
16	42472-0246	A-42472-0246		16	42472-0262	A-42472-0262		16				16			
17	42472-0247	A-42472-0247		17	42472-0263	A-42472-0263		17				17			
18	42472-0248	A-42472-0248		18	42472-0264	A-42472-0264		18				18			

REV:	<u>ECR/ECN INFORMATION</u>	TITLE:		<u>SHEET No.</u>
I	EC No: UCP2007-0341	FLAT HEADER ASSEMBLY (3.96)/.156 CENTERS BENT SQ PINS, W/ PEGS		- 5 -
	DATE: 2006-08-07			
<u>DOCUMENT NUMBER:</u> SD-42472-001		<u>CREATED / REVISED BY:</u> PRIDDER	<u>CHECKED BY:</u> ADERR	<u>APPROVED BY:</u> FSMITH
TEMPLATE FILENAME: PRODUCT_SPEC(SIZE_A)(V.1).DOC				