

ELECTRICAL SPECIFICATIONS:

1.0 TURNS RATIO	(P6-P8-P3) : (J6-J3)	: 1CT : 1 ± 3%
	(P2-P7-P1) : (J2-J1)	: 1CT : 1.4 ± 3%
2.0 INDUCTANCE	(P6-P3)=(J6-J3)	: 200uH MIN. @ 0.01V, 10KHz
	(P2-P1)	: 100uH MIN. @ 0.01V, 10KHz
3.0 LEAKAGE INDUCTANCE	P6-P3 <WITH J6 AND J3 SHORT>	: 0.3uH MAX. @ 1MHz
	P2-P1 <WITH J2 AND J1 SHORT>	: 0.08uH MAX. @ 1MHz
4.0 INTERWINDING CAPACITANCE	(P6,P3) TO (J6,J3)	: 20pf MAX @ 1MHz
	(P2,P1) TO (J2,J1)	: 20pf MAX. @ 1MHz
5.0 DC RESISTANCE	(J6-J3)=(J2-J1)	: 1.0 ohms Max.
	(P6-P8)=(P8-P3)	: 0.5 ohms Max.
	(P2-P7)=(P7-P1)	: 0.3 ohms Max.
6.0 DIELECTRIC WITHSTAND	(P6,P3) TO (J6,J3)	: 1500VAC
	(P2,P1) TO (J2,J1)	: 1500VAC

NOTE

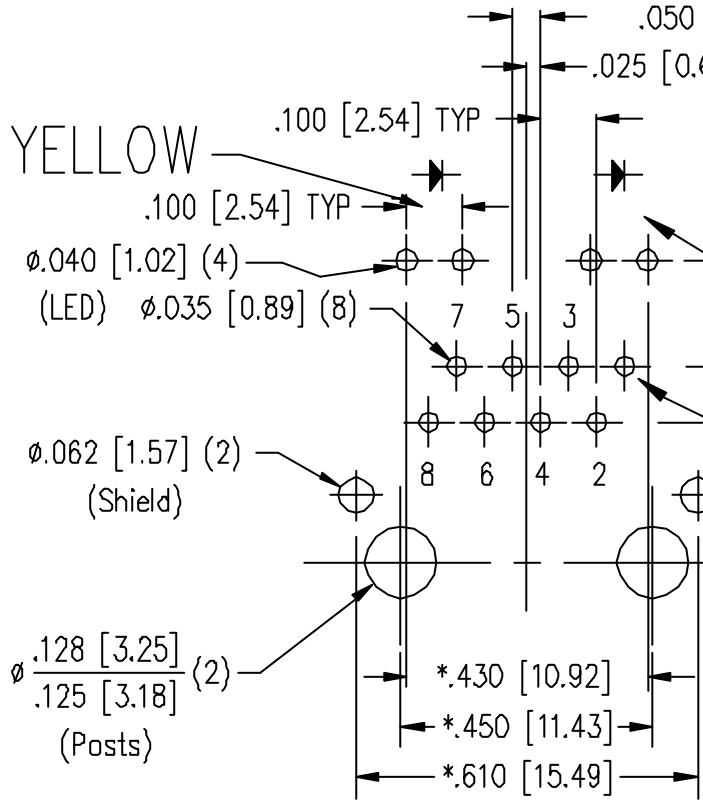
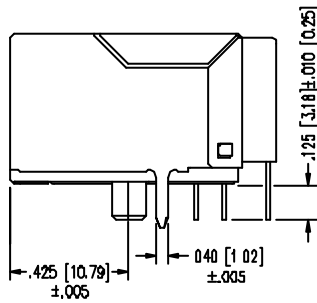
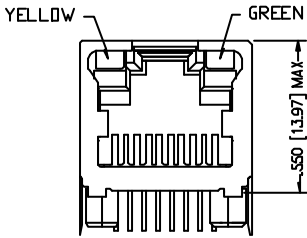
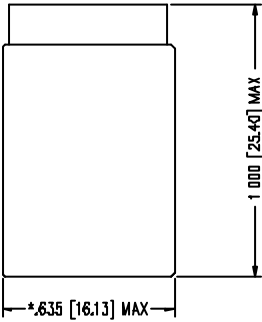
1.0 P  
CON

InNet  
http://  
Stewart  
http://

SHEET  
1 OF 2

STANDARD LED	WAVELENGTH
YELLOW	590 nm
GREEN	565 nm

\* WITH A FORWARD CURRENT



P.C.B. RECOMMENDED HOLE SIZE  
 SEEN FROM COMPONENT SIDE  
 TOLERANCE ±.003 [0.08] UNLESS OTHERWISE SPECIFIED

- NOTES
- TOLERANCES COMPLY WITH F.C.C. DIMENSION REQUIREMENTS
  - DIMENSIONS SHOWN WITH "\*" TO BE CENTRAL ABOUT CENTER LINE
  - DIMENSIONS SHOWN ARE SUBJECT TO CHANGE WITHOUT NOTICE.
  - PIN NOT ELECTRICALLY CONNECTED MAYBE OMITTED. SEE ELECTRICAL DRAWING FOR OMITTED PINS.

AVAILABLE WITH:  
 - STANDARD 50 MICRO-INCH SELECTIVE GOLD PLATING

CT750006

**InNet**  
<http://www.innet.com>  
**Stewart**  
<http://www.stewart.com>

SHEET  
 2 of 2