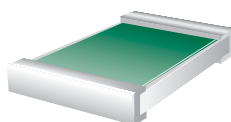


Thick Film Nickel Barrier Wraparound Surface Mount Chip Resistors

The ims RXI series of thick film wraparound surface mount chip resistors is ideal for most applications requiring an inexpensive, reliable chip resistor. The "X" designation in the RXI series is a variable that describes the subgroup type (Low ohm, Trimmable, etc). Please see the ordering information on the back for instructions. Thick film technology provides a stable resistor at a very affordable price. The wraparound terminations include a nickel barrier layer which affords excellent solderability and mechanical integrity. These chip resistors have the following features:

- High stability thick film resistor element
- 96% Al₂O₃ substrate material
- Nickel barrier layer for excellent solderability and mechanical integrity
- Trimmed to EIA standard values
- Tolerances to ± 0.5%
- Glass passivation of resistor element
- Available in bulk or on tape and reel
- 50 ppm available in RPI series only

Terminations



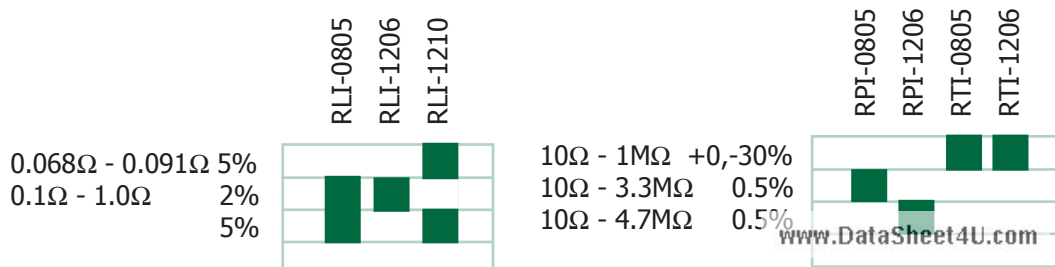
Full wraparound termination

nickel barrier layer

Resistance Ranges



¹Maximum resistance value is 100KΩ ²Minimum resistance value is 0.1Ω ±1% ³Maximum resistance value is 5.6MΩ Jumpers (0Ω) available in all sizes (RCI-0201,0402,0603 rated at 1 amp. All others rated at 2 amps ⁴22MΩ - 500MΩ available as special part. Contact **ims** for ranges and special P/N.



www.DataSheet4U.com
0201 0402
0603 0805
RXI
1206 1210
2010 2512
2512S



Features

Thick film technology

Full Wraparound

Nickel Barrier for excellent solderability

Resistance values from 0.068 ohm to 22 Megohm

Trimmable (RTI series)

Tolerances to 0.5 %

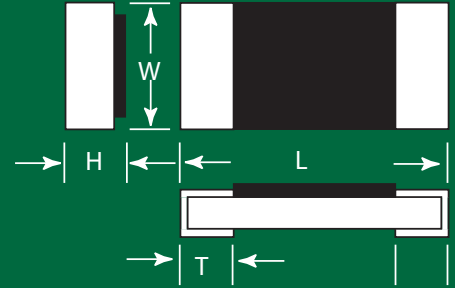
TCR to 50 ppm/ °C

ims International Manufacturing Services, Inc.

50 Schoolhouse Lane
 Portsmouth, RI 02871
 Tel (401) 683-9700
 Fax (401) 683-5571
 e-mail: ims@ims-resistors.com
<http://www.ims-resistors.com>

Dimensions

Part Number	Length	Width	Height	Terminal
RCI-0201	0.024 ± .002	0.012 ± .002	0.012 max.	0.006 ± .002
RCI-0402	0.039 ± .002	0.020 ± .004	0.016 max.	0.010 ± .004
RCI-0603	0.063 ± .006	0.031 ± .006	0.022 max.	0.012 ± .004
RCI-0805	0.079 ± .008	0.049 ± .004	0.026 max.	0.016 ± .008
RLI-0805	0.079 ± .006	0.049 ± .004	0.028 max.	0.016 ± .008
RCI-1206	0.126 ± .008	0.063 ± .006	0.028 max.	0.020 ± .010
RLI-1206	0.122 ± .008	0.063 ± .006	0.028 max.	0.012 ± .008
RLI-1210	0.122 ± .002	0.098 ± .006	0.028 max.	0.012 ± .008
RCI-2010	0.197 ± .008	0.098 ± .006	0.028 max.	0.020 ± .012
RCI-2512(S)	0.248 ± .008	0.126 ± .010	0.028 max.	0.026 ± .010



Characteristics

Operating Temperature	-55°C to +150°C
Short time overload	± (1% + 0.05 Ω) Max.
Terminal strength	± (1% + 0.05 Ω) Max.
Solder Heat Resistance	± (1% + 0.05 Ω) Max.
Solderability	95% minimum coverage
Temperature Cycle	± (1% + 0.05 Ω) Max.
Load Life	10 Ω ≤ R ≤ 1M Ω: ± (3% + 0.01 Ω) R < 10 Ω, R > 1M Ω: ± (5% + 0.1 Ω)

Specifications

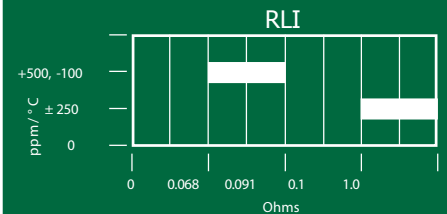
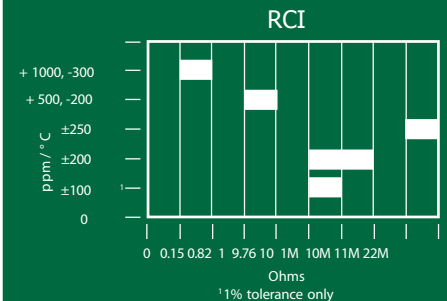
Maximum Working Voltage	
0201	15 VDC
0402, 0603	50 VDC
0805	150 VDC
1206, 2010, 2512, 2512S	350 VDC
Rated power (70°C)	
0201	50 mW
0402	63 mW
0603	100 mW
0805 (low ohms)	125 mW
0805	175 mW
1206	250 mW
1210(RCI)	250 mW
1210(RLI)	500 mW
2010	500 mW
2512	1000 mW
2512S	2000 mW

Ordering Information

Example: 100Ω, 5%, 175 mW, 0805 resistor

Example: RCI - 0805 - 1000 J	Tolerance
RCI (Standard)	F - 1%
RLI (Low Ohm)	J - 5%
RPI (Precision)	K - 10%
RTI (Untrimmed U Tol. only)	U - +0, -30%
Form factor	Resistance value
0201 0402 0603	The first three digits are significant values. The fourth is the number of zeroes following. The R indicates a decimal point for resistance values less than 100Ω.
0805(T) 1210 1206(T)	
2010(T) 2512(T) 2512S	
"T" indicates custom value trim	

TCR



Visit us on
the Web -
<http://www.ims-resistors.com>

Engineering Kits Available
Please contact your
nearest rep or contact
IMS directly.

ims International
Manufacturing
Services, Inc.

50 Schoolhouse Lane
Portsmouth, RI 02871
Tel (401) 683-9700
Fax (401) 683-5571
e-mail: ims@ims-resistors.com
<http://www.ims-resistors.com>