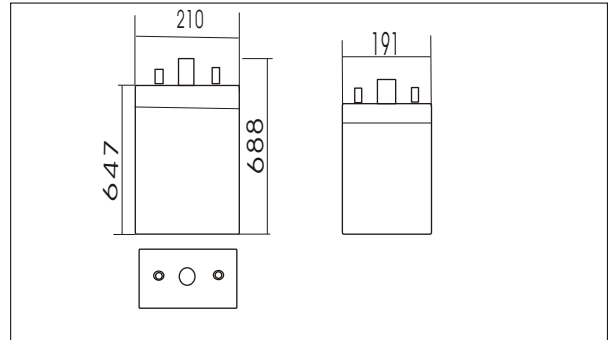




80PzV800 (2V800Ah)



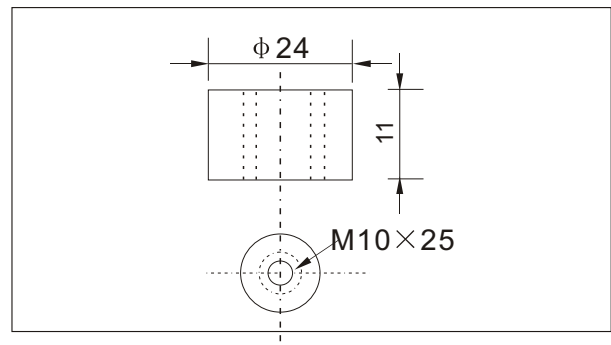
Outer dimensions (mm)



Specifications

Nominal Voltage		2 V
Rated capacity (10 hour rate)		800 Ah
Dimensions	Total Height	688mm (27.1 Inches)
	Height	647mm (25.5inches)
	Length	191 mm (7.52 inches)
	Width	210 mm (8.27inches)
Weight Approx		64.5Kg (141.9lbs)

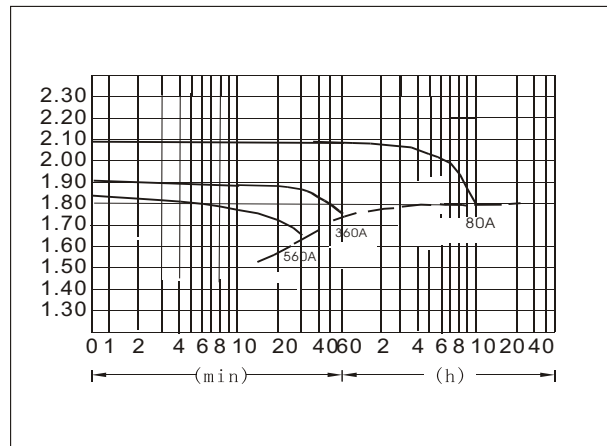
Terminal Type (mm)



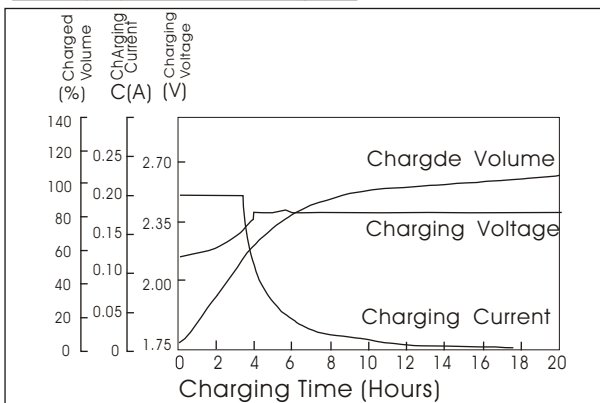
Characteristics

Capacity 25°C(77°F)	10 hour rate (80 A)	800Ah
	1 hour rate(360A)	360Ah
	0.5 hour rate(560A)	280Ah
Capacity affected by Temperature (10hour rate)	40°C(104°F)	102%
	25°C(77°F)	100%
	0°C(32°F)	85%
	-15°C(5°F)	65%
Self-Discharge at 25°C(77°F)	Capacity after 3 month storage	91%
	Capacity after 6 month storage	82%
	Capacity after 12 month storage	64%
Terminal quantity	4	
Charge (constant Voltage)	Initial Charging Current less than 160.0A Voltage 2.25-2.40V	

Discharge Curves 25°C(77°F)



Charging characteristics(25°C)



Cycling Curves

