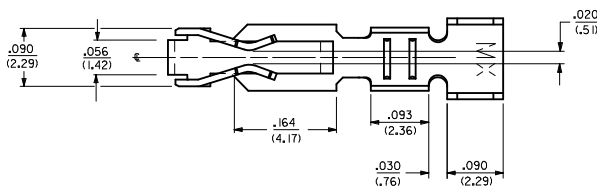
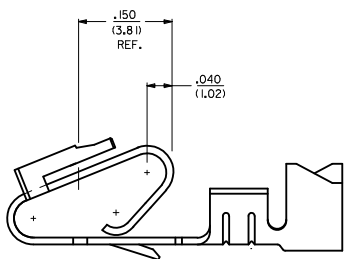


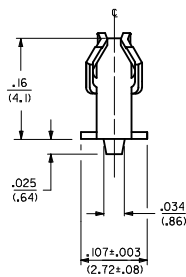
ALTERNATE GEOMETRY
SEE NOTE 10



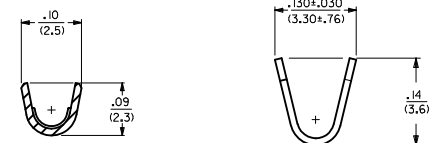
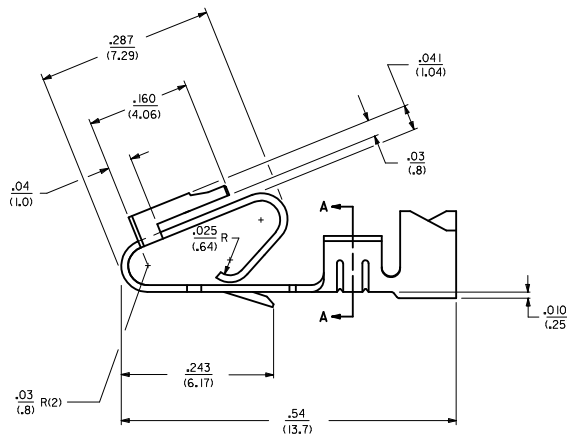
- NOTES:
 1. MATERIAL: SEE LEGEND
 2. FINISH:
 909 - OVERALL HOT TIN DIP: .000100/(0.00254) MIN.
 154 - OVERALL TIN: .000100/(0.00254) MIN. OVER .000050/(0.00127) MIN. NICKEL.
 555 - SELECT HARD GOLD: .000015/(0.00038) MIN. OVERALL NICKEL: .000030/(0.00076) MIN.
 558 - SELECT HARD GOLD: .000030/(0.00076) MIN. OVERALL NICKEL: .000050/(0.00127) MIN.
 OVERALL HARD GOLD FLASH: .000002/(0.00005) MIN.
 561 - SELECT HARD GOLD: .000030/(0.00076) MIN. OVERALL NICKEL: .000050/(0.00127) MIN.
 3. PRODUCT SPECIFICATION: PS-40-02
 4. PACKAGING SPECIFICATION: CHAIN FORM: SEE PK-6838-001
 LOOSE FORM: SEE PK-2759-001
 5. TERMINAL FOR USE IN HOUSING SERIES 6442 AND 41695.
 6. SEE 7258 SERIES FOR THIS PART WITH CRIMP FOR 22-26 AWG. WIRE.
 7. CRIMP FOR 18 TO 20 GA. WIRE WITH MAX. INSULATION DIA. OF .100(2.79).
 STRIP LENGTH OF .125/100 / (3.18/2.54)
 8. DIMENSIONS GIVEN ACROSS CENTERLINES ARE SYMMETRICAL ABOUT THOSE CENTERLINES WITHIN HALF THE TOTAL TOLERANCE.
 9. THIS PART CONFORMS TO CLASS B REQUIREMENTS OF COSMETIC SPECIFICATION PS-45499-002.
 10. ALTERNATE GEOMETRY PRESENT ON SOME PART NUMBERS. SEE SHEET 2.



SELECTIVE PLATING LOCATION



CUT OFF DIM.

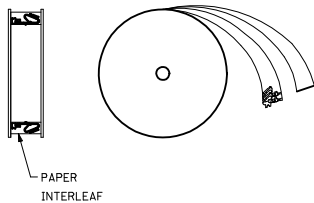


SECTION A-A

- LEGEND: 6838- ()
- WINDING
 - A= PER DETAIL A
 - BLANK= PER DETAIL B
 - FORM
 - BLANK= CHAIN
 - L= LOOSE
 - PLATING
 - SEE NOTE 2

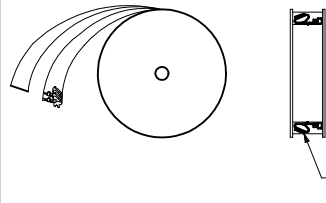
MATERIAL:
 (.271/.0106 THK
 BLANK=BRASS
 A=PHOS BRONZE

WINDING DETAIL 'A'



PAPER INTERLEAF

WINDING DETAIL 'B'



PAPER INTERLEAF

102 TO 154 PLTIG. IEC NO. UCF2012-1821 DRAWN BY: DRW/MK/STROH 2012/01/04 CHECKED BY: CHY/DK/KIPPER 2012/01/05 APPROVED BY: APPR/FJ/SWTH 2012/02/02	QUALITY SYMBOLS	GENERAL TOLERANCES (UNLESS SPECIFIED)	DIMENSION STYLE	SCALE	DESIGN UNITS	THIRD ANGLE PROJECTION
	▽=0	mm INCH	IN/MM	---	INCH	☉
	▽=0	4 PLACES ± --- ± ---	DRAWN BY DATE	---	---	---
	▽=0	3 PLACES ± .25 ± .015	GUZIK 11/15/89	---	---	---
	1 PLACE ± 0.36 ± ---	CHECKED BY DATE	---	---	---	
	ANGULAR ±1/2°	APPROVED BY DATE	---	---	---	
	DRAFT WHERE APPLICABLE MUST REMAIN WITHIN DIMENSIONS	LENZ 11/15/89	---	---	---	
		MATERIAL NO.	---	---	---	
		SEE CHART	---	---	---	
		DOCUMENT NO.	---	---	---	
		SD-6838	---	---	---	
		1 OF 2	---	---	---	

2	AR
1	AR
	SHT/REV

20 19 18 17 16 15 14 13 12 11 10 9 8 7 6 5 4 3 2 1

6838-(*)**

PART NO.	ENG. NO.	
08-50-0187	6838-(P909)	SEE NOTE 1
08-50-0189	6838-(P909)L	SEE NOTE 1
08-50-0275	6838-(P909)-A	

6838-A(*)**

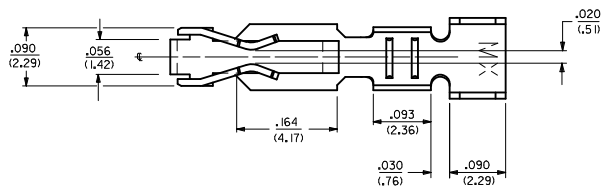
PART NO.	ENG. NO.	
08-58-0187	6838-A(P558)	
08-58-0189	6838-A(P558)L	
08-52-0112	6838-A(P909)	SEE NOTE 1
08-52-0113	6838-A(P909)L	SEE NOTE 1
08-50-0024	6838-A(154)	
08-50-0251	6838-A(154)L	
08-58-0105	6838-A(P555)	
08-58-0106	6838-A(P555)L	
08-58-0110	6838-A(P56 I)	SEE NOTE 1
08-58-0111	6838-A(P56 I)L	SEE NOTE 1
08-58-0118	6838-A(56 I)	
08-58-0119	6838-A(56 I)L	

NOTES:

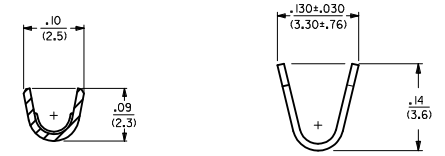
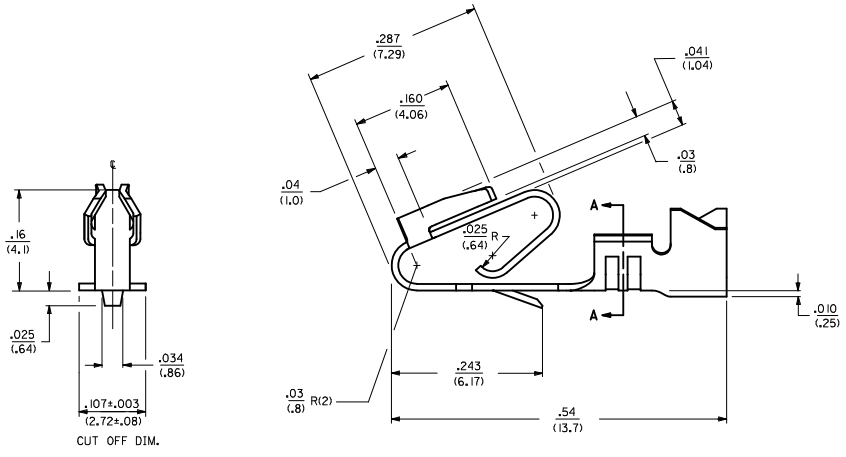
1. PART MANUFACTURED WITH ALTERNATE GEOMETRY. SEE SHEET 1.

SEE SHEET 1 IEC NO: UCF2012-1821 DRAWN BY: DRW:MMSTROH 2012/01/04 CHECKED BY: CHY:KH/KIPPER 2012/01/05 APPROVED BY: APPR:FSM/TH 2012/02/02 AR	QUALITY SYMBOLS ▽=0 ▽=0 ▽=0	GENERAL TOLERANCES (UNLESS SPECIFIED) <table border="1"> <thead> <tr> <th></th> <th>mm</th> <th>INCH</th> </tr> </thead> <tbody> <tr> <td>4 PLACES</td> <td>±.000</td> <td>±.000</td> </tr> <tr> <td>3 PLACES</td> <td>±.000</td> <td>±.000</td> </tr> <tr> <td>2 PLACES</td> <td>±.000</td> <td>±.000</td> </tr> <tr> <td>1 PLACE</td> <td>±.000</td> <td>±.000</td> </tr> </tbody> </table> ANGULAR ±1/2° DRAFT WHERE APPLICABLE MUST REMAIN WITHIN DIMENSIONS		mm	INCH	4 PLACES	±.000	±.000	3 PLACES	±.000	±.000	2 PLACES	±.000	±.000	1 PLACE	±.000	±.000	DIMENSION STYLE IN/MM DRAWN BY: GUZIK DATE: 11/15/89 CHECKED BY: PATEL DATE: 11/15/89 APPROVED BY: LENZ DATE: 11/15/89	SCALE: --- DESIGN UNITS: INCH THIRD ANGLE PROJECTION	TITLE: TRIFURCON TERMINAL CRIMP TYPE, .156 CENTERS 18 TO 20 AWG WIRE MOLEX INCORPORATED MATERIAL NO: SEE CHART DOCUMENT NO: SD-6838	SHEET NO: 2 OF 2
		mm	INCH																		
	4 PLACES	±.000	±.000																		
	3 PLACES	±.000	±.000																		
2 PLACES	±.000	±.000																			
1 PLACE	±.000	±.000																			
THIS DRAWING CONTAINS INFORMATION THAT IS PROPRIETARY TO MOLEX INCORPORATED AND SHOULD NOT BE USED WITHOUT WRITTEN PERMISSION																					
SIZE: D																					
DIMENSION STYLE: IN/MM																					

19 18 17 16 15 14 13 12 11 10 9 8 7 6 5 4 3 2 1



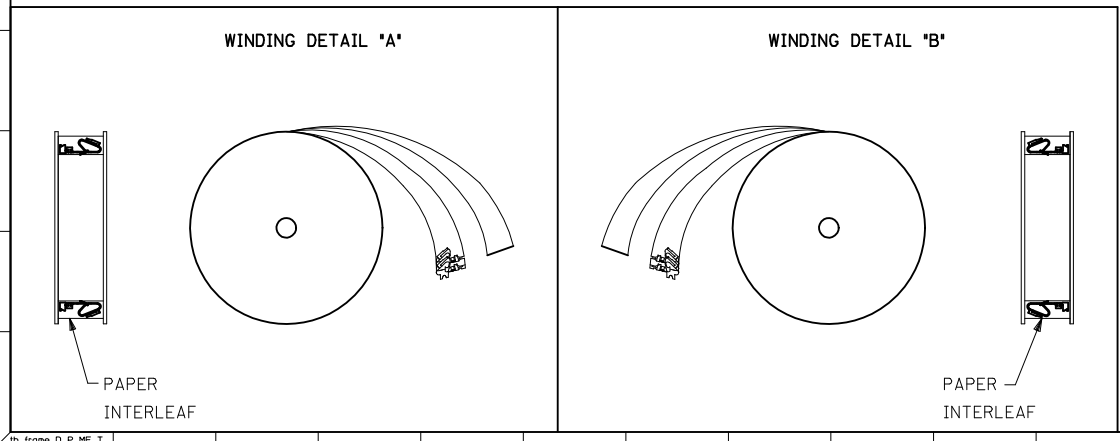
- NOTES:
1. MATERIAL: SEE LEGEND
 2. FINISH: 909 - OVERALL HOT TIN DIP: .000100/10.00254) MIN.
 3. PRODUCT SPECIFICATION: PS-40-02
 4. PACKAGING SPECIFICATION: PK-6838-001
 5. PART IS FOR USE WITH 18 TO 20 GA. WIRE WITH MAX. INSULATION DIA. OF .110/(2.79), STRIP LENGTH OF .125/.100 / (3.18/2.54).
 6. SEE 7258 SERIES FOR THIS PART WITH CRIMP FOR 22-26 AWG. WIRE.
 7. TERMINAL FOR USE IN 6442 AND 41695 SERIES HOUSINGS.
 8. DIMENSIONS GIVEN ACROSS CENTERLINES ARE SYMMETRICAL ABOUT THOSE CENTERLINES WITHIN HALF THE TOTAL TOLERANCE.
 9. THIS PART CONFORMS TO CLASS B REQUIREMENTS OF COSMETIC SPECIFICATION PS-45499-002.



SECTION A-A

CUT OFF DIM.

LEGEND: 6838-+ (P909) + +
 MATERIAL: (.27)/.0106 THK BLANK=BRASS
 WINDING BLANK= PER DETAIL B
 FORM BLANK= CHAIN
 PLATING PER SDES-88 SEE NOTE 2



UPDATE GEOMETRY IEC NO. UCP2011-0681 DRAWN/KIPPER 2010/09/14 CHYKOS/SSOUSEK 2011/02/23 APPR:FSM/TH 2011/02/25	QUALITY SYMBOLS	GENERAL TOLERANCES (UNLESS SPECIFIED)	DIMENSION STYLE	SCALE	DESIGN UNITS	THIRD ANGLE PROJECTION	
	▽=0	mm INCH	IN/MM	---	INCH	☉	
	▽=0	4 PLACES ± --- ± ---	DRAWN BY	DATE	TITLE		
	▽=0	3 PLACES ± --- ± .010	JJS	07/29/04	TRIFURCON TERMINAL CRIMP TYPE .156 CENTERS 18 TO 20 AWG WIRE		
	2 PLACES ± 0.25 ± .015	CHECKED BY	DATE				
	1 PLACE ± 0.36 ± ---	KSS	07/29/04				
	ANGULAR ±1/2°	APPROVED BY	DATE				
	DRAFT WHERE APPLICABLE MUST REMAIN WITHIN DIMENSIONS	YM	07/29/04				
		MATERIAL NO.	50291639				
		DOCUMENT NO.	SD-6838-001				
		SIZE	D				
		THIS DRAWING CONTAINS INFORMATION THAT IS PROPRIETARY TO MOLEX INCORPORATED AND SHOULD NOT BE USED WITHOUT WRITTEN PERMISSION					
						SHEET NO. 1 OF 1	