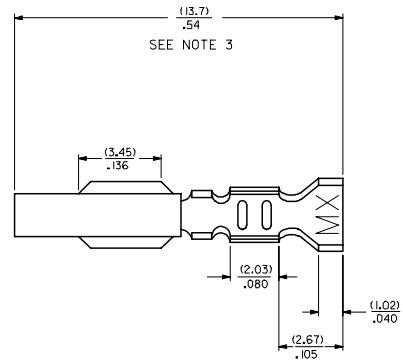
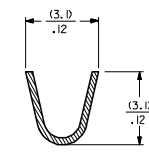
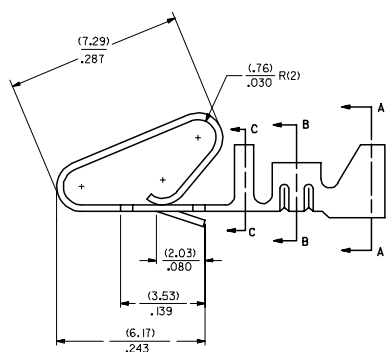
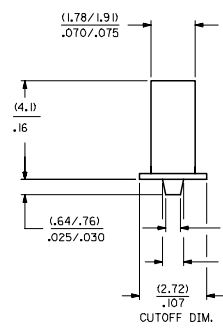


20 19 18 17 16 15 14 13 12 11 10 9 8 7 6 5 4 3 2 1

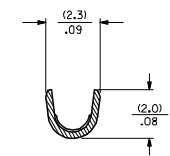
- NOTES:
1. CRIMP ACCEPTS 18-22 GA. WIRE WITH (2.79)/.110 MAX. INSULATION DIA.
 2. DIMENSIONS GIVEN ACROSS CENTERLINES ARE SYMMETRICAL ABOUT THOSE CENTERLINES WITHIN HALF THE TOTAL TOLERANCE.
 3. THIS DIMENSION TO BE CHECKED WITH THE INSULATION CRIMP SECTION HELD AT 90° TO DATUM -A-.
 4. THIS PART CONFORMS TO PRODUCT SPEC. 08-50.
 5. TERMINAL FOR USE IN 41695 AND 6345 HOUSINGS.



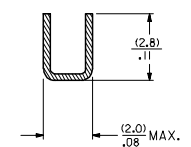
EDP NO.	ENGINEERING NO.
08-56-0187	88 18-(50)I
08-56-0188	88 18-(50)IL
	88 18-(55)S
	88 18-(55)SL
08-50-0008	88 18-(P909)
08-50-0023	88 18-(P909)L
40-01-1181	88 18-(999)
40-01-1182	88 18-A(999)
08-50-0705	88 18-A(102)
08-50-0706	88 18-A(102)L
08-65-0128	88 18-A(555)
08-65-0129	88 18-A(555)L
08-52-0131	88 18-A(P909)
08-52-0132	88 18-A(P909)L
08-58-0135	88 18-A(550)
08-58-0136	88 18-A(550)L



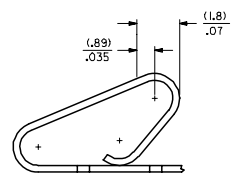
SECTION A-A



SECTION B-B



SECTION C-C



POST-PLATED SELECT GOLD LOCATION

88 18-**-*(+)*

MATERIAL
(.27)/.0106 THK.
BLANK= BRASS
A= PHOS BRONZE

OPTION CODE
BLANK=AS SHOWN

WINDING SPEC
BLANK= PER ES-339-B
L=LOOSE

PLATING
*(P909) OVERALL HOT TIN DIP: .00254 MICROMETERS MIN
(550) SELECT GOLD: .00038 MICROMETERS MIN.
OVERALL GOLD FLASH: .00005 MICROMETERS MIN.
OVERALL NICKEL UNDERPLATE: .00076 MICROMETERS MIN.
(555) SELECT GOLD: .00038 MICROMETERS MIN.
OVERALL NICKEL UNDERPLATE: .00076 MICROMETERS MIN.

*THE PRIMARY SHIPPING CARTON WILL BE LABELED *COMPLIANT TO ROHS DIRECTIVE 2002/95/EC AND ELV ANNEX II OF DIRECTIVE 2000/53/EC. *CARTONS WITHOUT THIS LABEL MAY CONTAIN PRODUCT WITH TIN-LEAD PLATING.

CHANGE TO ME10 EC NO: UCP2005-0948 DRAWN BY: JJS CHECKED BY: PATEL APPROVED BY: LENZ DATE: 02/02/93 DATE: 02/02/93 DATE: 02/02/93	QUALITY SYMBOLS ▽=0 ▽=0	GENERAL TOLERANCES (UNLESS SPECIFIED)		DIMENSION STYLE IN/MM		SCALE ---	DESIGN UNITS INCH	<input checked="" type="checkbox"/> THIRD ANGLE PROJECTION
		4 PLACES ± .010 3 PLACES ± .010 2 PLACES ± 0.25 1 PLACE ± 0.36	mm INCH	DATE DATE DATE	TITLE CRIMP STYLE KK TYPE, .156 CENTERS W/ANTIFISHOOKING FEATURE	MATERIAL NO. SEE CHART	DOCUMENT NO. SD-8818	SHEET NO. 1 OF 1
		ANGULAR ±1/2°		DRAFT WHERE APPLICABLE MUST REMAIN WITHIN DIMENSIONS		THIS DRAWING CONTAINS INFORMATION THAT IS PROPRIETARY TO MOLEX INCORPORATED AND SHOULD NOT BE USED WITHOUT WRITTEN PERMISSION		
		DRAFT WHERE APPLICABLE MUST REMAIN WITHIN DIMENSIONS		SEE CHART		THIS DRAWING CONTAINS INFORMATION THAT IS PROPRIETARY TO MOLEX INCORPORATED AND SHOULD NOT BE USED WITHOUT WRITTEN PERMISSION		

19 18 17 16 15 14 13 12 11 10 9 8 7 6 5 4 3 2 1