

PI-003

PARALLEL DATA TO CVBS 10 BIT

INPUT

Parallel multiplexed component signals to CCIR Rec 656
SMPTE RP-125 coded.

Note. To ease interfacing into equipment data is latched by the rising edge of the clock.

Data rate	27 MHz
Data Set up time	3 ns min to positive edge of clock
Data hold time	2.5 ns min from positive edge of clock
Line standard	625/50 or 525/60 Auto detection

Analogue Output Characteristics

Output signal	PAL-I, NTSC-M, according to line input standard - auto sensing
No of Outputs:	2
Output Impedance	75 Ohms $\pm 1\%$
Output return loss	> 40 dB to 5.5 MHz
Resolution	10 bit
Freq. Response	< 0.15 dB to 5.5 MHz (with eq set to minimum and gain at 0 dB) < 0.3 dB to 5.75 MHz
K-ratings	Chroma filtering as specified by CCIR624-3. Equal I/Q filtering for NTSC kp, kpb, kbar < 0.5%
Chroma/luma gain inequality	< 0.1 dB
Chroma/luma delay inequality	< 10 ns
Differential phase	< 1.0 degree
Differential gain	< 0.5%
Noise	> 70 dB rms to 5.5 MHz

Power

+ 5V ± 0.25 V (550mA max)

Operating Temp

0°C to 40°C

Note: This item is **NOT** aqueous washable.

Mechanical Details

The following formats are available:

Format A	DR00212A	STD configuration with low profile pins and BNC connectors for outputs.
Format B	DR00213A	LOW profile pins and MCX connectors for outputs.
Format C	DR00214A	STAND-OFF configuration with BNC outputs.
Format D	DR00245B	LOW profile i/p pins and 0.65mm ² o/p pins.

Connector Pinout

1 +5V	2 CLK	3 D0	4 D1	5 D2	6 D3	7 D4	8 D5	9 D6	10 D7	11 D8	12 D9
13 +5V	14 +5V	15 A0	16 A1	17 SDA	18 SCL	19 RESET	20 I/O 1	21 I/O 0	22 GND	23 GND	24 GND
25 I/O 2	26 I/O 3	27 I/O 4	28 NC	29 NC	30 NC	31 NC	32 NC	33 NC	34 NC	35 *	36 *
37 -5V	38 -5V	39 -5V	40 NC	41 NC	42 NC	43 NC	44 NC	45 NC	46 ID0	47 ID1	48 ID2

---- option 000 only ----

D0 to D9

Parallel Data Bus D0 LSB , D9 MSB

CLK

Parallel Data clock

SCL, SDA

I2C data and clock lines

*

Not connected on this card but is connected on other cards within the range.

ID0,ID1,ID2

Card type identification code.

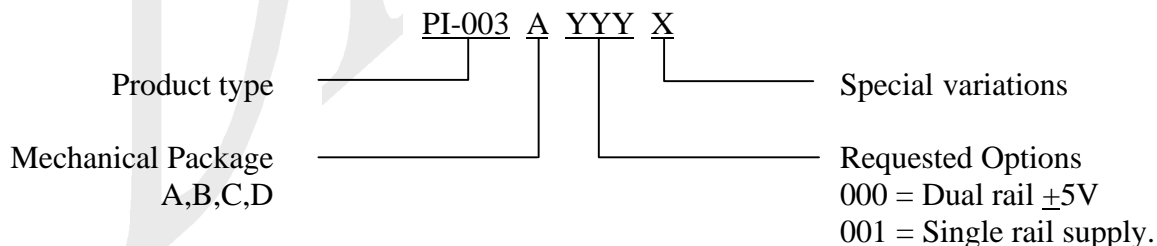
I/O 0 – 4

Facilities for code applications/functionality control. Details TBA.

Card Type Identification code.

CARD TYPE	ID2	ID1	ID0
PI-003	0V	+5v	+5v

Ordering codes



PACKAGE DETAIL

