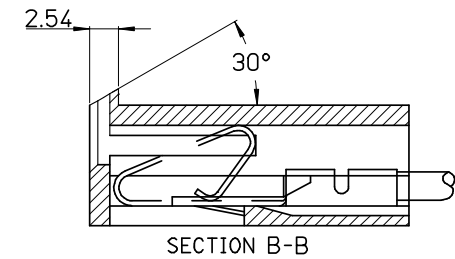
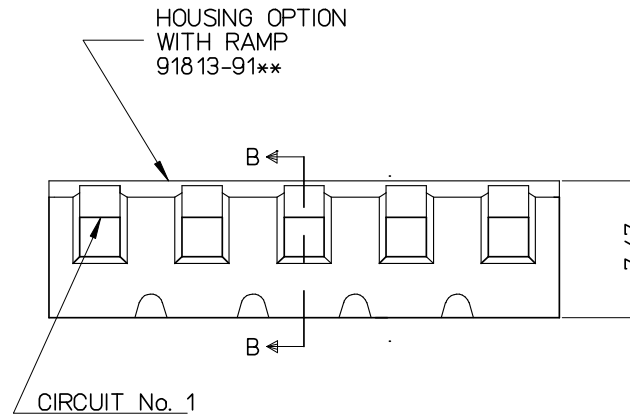
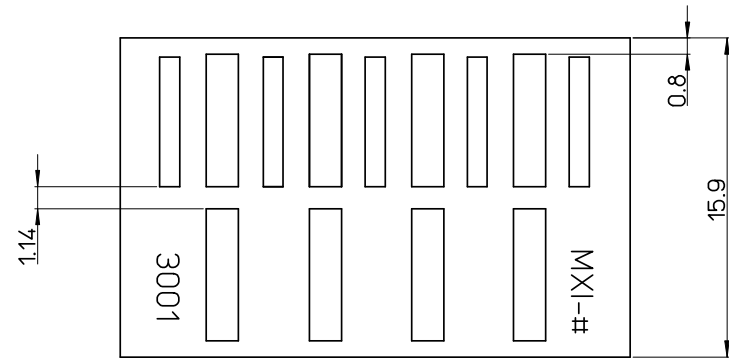
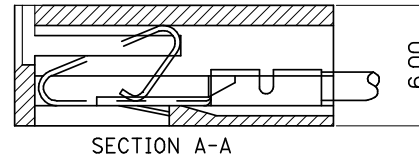


1.14 REF. ROUND OR SQUARE PIN.

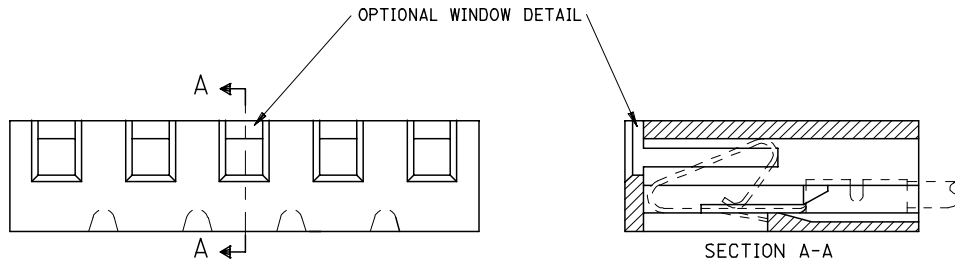


20	91813-9020	91813-9120	96.52 ± .3	101.60 <sup>+0</sup> / <sub>-0.4</sub>
19	-9019	-9119	91.44 ± 0.3	96.52 <sup>+0</sup> / <sub>-0.4</sub>
18	-9018	-9118	86.36 ± 0.3	91.44 <sup>+0</sup> / <sub>-0.4</sub>
17	-9017	-9117	81.28 ± 0.3	86.36 <sup>+0</sup> / <sub>-0.4</sub>
16	-9016	-9116	76.20 ± 0.25	81.28 <sup>+0</sup> / <sub>-0.4</sub>
15	-9015	-9115	71.12 ± 0.25	76.20 <sup>+0</sup> / <sub>-0.4</sub>
14	-9014	-9114	66.04 ± 0.25	71.12 <sup>+0</sup> / <sub>-0.4</sub>
13	-9013	-9113	60.96 ± 0.25	66.04 <sup>+0</sup> / <sub>-0.4</sub>
12	-9012	-9112	55.88 ± 0.25	60.96 <sup>+0</sup> / <sub>-0.4</sub>
11	-9011	-9111	50.80 ± 0.20	55.88 <sup>+0</sup> / <sub>-0.4</sub>
10	-9010	-9110	45.72 ± 0.20	50.80 <sup>+0</sup> / <sub>-0.4</sub>
9	-9009	-9109	40.64 ± 0.20	45.72 <sup>+0</sup> / <sub>-0.4</sub>
8	-9008	-9108	35.56 ± 0.20	40.64 <sup>+0</sup> / <sub>-0.4</sub>
7	-9007	-9107	30.48 ± 0.20	35.56 <sup>+0</sup> / <sub>-0.4</sub>
6	-9006	-9106	25.40 ± 0.10	30.48 <sup>+0</sup> / <sub>-0.4</sub>
5	-9005	-9105	20.32 ± 0.10	25.40 <sup>+0</sup> / <sub>-0.15</sub>
4	-9004	-9104	15.24 ± 0.10	20.32 <sup>+0</sup> / <sub>-0.15</sub>
3	-9003	-9103	10.16 ± 0.10	15.24 <sup>+0</sup> / <sub>-0.15</sub>
2	91813-9002	91813-9102	5.08 ± 0.10	10.16 <sup>+0</sup> / <sub>-0.15</sub>
			A	B
DIMENSION				

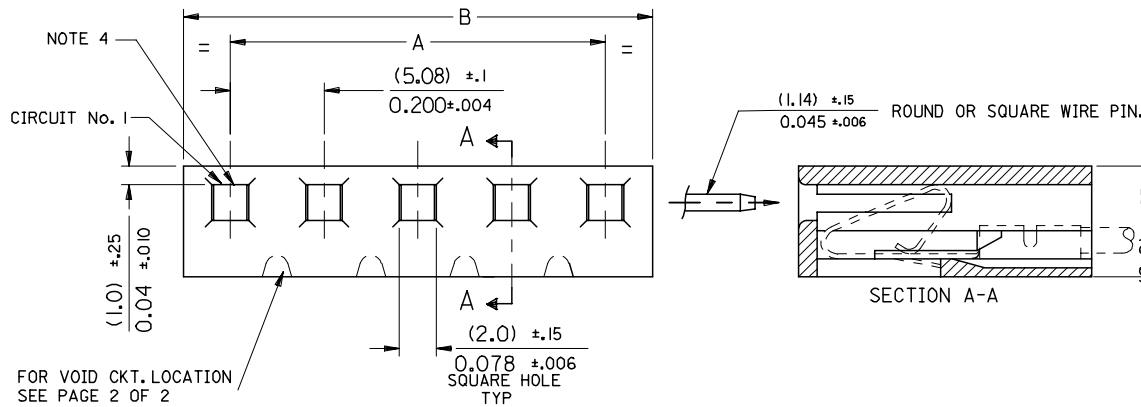
**NOTE:**

1. MATERIAL: POLAMIDE (PA6), UL-94 V-2  
COLOUR WHITE
2. THIS HOUSING USES KK TERM. No's. 2478, 2578 & 2878
3. COLOUR VARIATION MAY BE VISIBLE ON THE HOUSING SURFACES
4. PRODUCT SPECIFICATION: PS-99020-0087

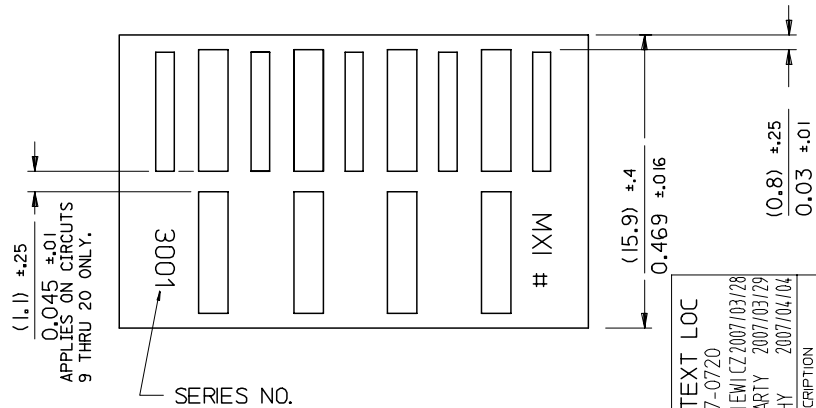
ADDED PROD. SPEC EC NO: E2008-0301 DRWN: ILK/ERNAN 2008/02/04 CHKD: 2008/02/06 APPR: BMAGUIRE 2008/02/07	QUALITY SYMBOLS ▽=0 ▽=0	GENERAL TOLERANCES (UNLESS SPECIFIED)		DIMENSION STYLE MM ONLY		SCALE 7:1	DESIGN UNITS METRIC	THIRD ANGLE PROJECTION			
		4 PLACES ± --- ± ---	3 PLACES ± --- ± ---	2 PLACES ± 0.25 ± ---	1 PLACE ± 0.35 ± ---	DRAWN BY DWASZKIEWICZ	DATE 2006/06/08	TITLE 5.08MM KK CRP TERM HSG GLOW WIRE COMPATIBLE			
		ANGULAR ± 1/2°				CHECKED BY J. DENNEHY		DATE		APPROVED BY J. DENNEHY	
		DRAFT WHERE APPLICABLE MUST REMAIN WITHIN DIMENSIONS				MATERIAL NO. SEE CHART		DOCUMENT NO. SD-91813-001		SHEET NO. 1 OF 1	
THIS DRAWING CONTAINS INFORMATION THAT IS PROPRIETARY TO MOLEX INCORPORATED AND SHOULD NOT BE USED WITHOUT WRITTEN PERMISSION											



NOTE :  
 1. DIMENSIONS SHOWN MILLIMETERS INCHES  
 2. FOR OTHER PRODUCT SPEC'S. SEE PSX 10-39.  
 3. THIS HOUSING USES KK TERM. No's. 2478, 2578 & 28



FOR VOID CKT. LOCATION SEE PAGE 2 OF 2



MAT'L: NYLON

CENTER RIB ONLY

10-01-1204	E-3001-20	3.800 ±.012	4.000 <sup>+0.006</sup> <sub>-0.016</sub>	96.52 ±0.3	101.60 <sup>+0.3</sup> <sub>-0.4</sub>
-1194	-19	3.600 ±.012	3.800 <sup>+0.006</sup> <sub>-0.016</sub>	91.44 ±0.3	96.52 <sup>+0.3</sup> <sub>-0.4</sub>
-1184	-18	3.400 ±.012	3.600 <sup>+0.006</sup> <sub>-0.016</sub>	86.36 ±0.3	91.44 <sup>+0.3</sup> <sub>-0.4</sub>
-1174	-17	3.200 ±.012	3.400 <sup>+0.006</sup> <sub>-0.016</sub>	81.28 ±0.3	86.36 <sup>+0.3</sup> <sub>-0.4</sub>
-1164	-16	3.000 ±.010	3.200 <sup>+0.006</sup> <sub>-0.016</sub>	76.20 ±0.25	81.28 <sup>+0.3</sup> <sub>-0.4</sub>
-1154	-15	2.800 ±.010	3.000 <sup>+0.006</sup> <sub>-0.016</sub>	71.12 ±0.25	76.20 <sup>+0.3</sup> <sub>-0.4</sub>
-1144	-14	2.600 ±.010	2.800 <sup>+0.006</sup> <sub>-0.016</sub>	66.04 ±0.25	71.12 <sup>+0.3</sup> <sub>-0.4</sub>
-1134	-13	2.400 ±.010	2.600 <sup>+0.006</sup> <sub>-0.016</sub>	60.96 ±0.25	66.04 <sup>+0.3</sup> <sub>-0.4</sub>
-1124	-12	2.200 ±.010	2.400 <sup>+0.006</sup> <sub>-0.016</sub>	55.88 ±0.25	60.96 <sup>+0.3</sup> <sub>-0.4</sub>
-1114	-11	2.000 ±.008	2.200 <sup>+0.006</sup> <sub>-0.012</sub>	50.80 ±0.20	55.88 <sup>+0.3</sup> <sub>-0.4</sub>
-1104	-10	1.800 ±.008	2.000 <sup>+0.006</sup> <sub>-0.008</sub>	45.72 ±0.20	50.80 <sup>+0.3</sup> <sub>-0.4</sub>
-1094	-9	1.600 ±.008	1.800 <sup>+0.006</sup> <sub>-0.008</sub>	40.64 ±0.20	45.72 <sup>+0.3</sup> <sub>-0.4</sub>
-1084	-8	1.400 ±.008	1.600 <sup>+0.006</sup> <sub>-0.008</sub>	35.56 ±0.20	40.64 <sup>+0.3</sup> <sub>-0.4</sub>
-1074	-7	1.200 ±.008	1.400 <sup>+0.006</sup> <sub>-0.008</sub>	30.48 ±0.20	35.56 <sup>+0.3</sup> <sub>-0.4</sub>
-1064	-6	1.000 ±.004	1.200 <sup>+0.006</sup> <sub>-0.008</sub>	25.40 ±0.10	30.48 <sup>+0.3</sup> <sub>-0.4</sub>
-1054	-5	.800 ±.004	1.000 <sup>+0.006</sup> <sub>-0.006</sub>	20.32 ±0.10	25.40 <sup>+0.3</sup> <sub>-0.4</sub>
-1044	-4	.600 ±.004	.800 <sup>+0.006</sup> <sub>-0.006</sub>	15.24 ±0.10	20.32 <sup>+0.3</sup> <sub>-0.4</sub>
-1034	-3	.400 ±.004	.600 <sup>+0.006</sup> <sub>-0.006</sub>	10.16 ±0.10	15.24 <sup>+0.3</sup> <sub>-0.4</sub>
-1024	-2	.200 ±.004	.400 <sup>+0.006</sup> <sub>-0.006</sub>	5.08 ±0.10	10.16 <sup>+0.3</sup> <sub>-0.4</sub>
10-01-1014	E-3001-1		.200 <sup>+0.006</sup> <sub>-0.006</sub>		5.08 <sup>+0.3</sup> <sub>-0.4</sub>
PART No.	ENG. No.	ENGLISH		METRIC	
		A	B	A	B

**CORRECT TEXT LOC**  
 EC NO: E2007-0720  
 DRWN: DWASZKI EMI CZ 2007/03/28  
 CHKD: D. MOR ARTY 2007/03/29  
 APPR: DENNEHY 2007/04/04

QUALITY SYMBOLS  
 ▽=0  
 ▽=0

GENERAL TOLERANCES (UNLESS SPECIFIED)

	mm	INCH
4 PLACES	± ---	± ---
3 PLACES	± ---	±.010
2 PLACES	± 0.25	±.014
1 PLACE	± 0.35	± ---

ANGULAR ±1/2°

DRAFT WHERE APPLICABLE MUST REMAIN WITHIN DIMENSIONS

DIMENSION STYLE  
MM/IN

SCALE  
7:1

DESIGN UNITS  
METRIC

THIRD ANGLE PROJECTION

DRAWN BY P. MOORE DATE 1998/09/15  
 CHECKED BY MGOONEY DATE 1999/03/12  
 APPROVED BY MWILHITE DATE 1999/03/12

TITLE  
5.08MM KK CRP TERM HSG

MATERIAL NO. SEE CHART  
 DOCUMENT NO. SDE-3001-N-\*  
 SHEET NO. 1 OF 1

THIS DRAWING CONTAINS INFORMATION THAT IS PROPRIETARY TO MOLEX INCORPORATED AND SHOULD NOT BE USED WITHOUT WRITTEN PERMISSION

PART NO. SEE CHART  
DWG. NO. SDE-3001-N\*

VOID CKT. LOCATION	PART No.	ENG. No.	NO OF CKTS.
11	97-00-0919	E-3001-12-11	12
2	NOT TOOLED	E-3001-7-2	7
3	I 10-01-1080	-8-3	8
5	I -3085	-8-5	8
4	I -3044	-4-4	4
3	I -1030	-3-3	3
2	-1049	-4-2	4
2	-1109	-10-2	10
2	-1099	-9-2	9
5	10-01-1069	E-3001-6-5	6

FOR MANUFACTURE IN SINGAPORE ONLY

FOR DIMENSIONS SEE SHEET No.1

REDRAWN ON CAD EC NO. E90109 DRWN: P.MOORE 98/09/19 CHK: / / / / APPR: / / / /	DESCRIPTION MAJOR = CRITICAL = C =	QUALITY SYMBOLS  	GENERAL TOLERANCES: (UNLESS SPECIFIED) <table border="1"> <thead> <tr> <th></th> <th>mm</th> <th>INCH</th> </tr> </thead> <tbody> <tr> <td>4 PLACES</td> <td>±0.</td> <td>±.</td> </tr> <tr> <td>3 PLACES</td> <td>±0.</td> <td>±.</td> </tr> <tr> <td>2 PLACES</td> <td>±0.</td> <td>±.</td> </tr> <tr> <td>1 PLACE</td> <td>±0.</td> <td>±.</td> </tr> </tbody> </table>		mm	INCH	4 PLACES	±0.	±.	3 PLACES	±0.	±.	2 PLACES	±0.	±.	1 PLACE	±0.	±.	SCALE : <input type="checkbox"/> mm <input type="checkbox"/> INCH	DESIGN UNITS <input type="checkbox"/> mm <input type="checkbox"/> INCH	<input checked="" type="checkbox"/> THIRD ANGLE PROJECTION <input type="checkbox"/> DIMENSIONS: mm INCH mm ONLY	DRAWN BY & DATE P.MOORE 98/09/19 CHECKED BY & DATE MGOONEY 12/03/99 APPROVED BY & DATE MWILHITE 12/03/99	TITLE: HOUSING, CONNECTOR, KK (5.08)/.200 CRIMP STYLE TERM.
		mm	INCH																				
	4 PLACES	±0.	±.																				
3 PLACES	±0.	±.																					
2 PLACES	±0.	±.																					
1 PLACE	±0.	±.																					
K REV	DRAFT WHERE APPLICABLE MUST REMAIN WITHIN DIMENSIONS		CAD FILENAME PM19.DGN		MATERIAL NO. SEE CHART		DRAWING NO. SDE-3001-N-*		SHEET NO. 2 OF														
	THIS DRAWING CONTAINS INFORMATION THAT IS PROPRIETARY TO MOLEX INCORPORATED AND SHOULD NOT BE USED WITHOUT WRITTEN PERMISSION.							SIZE B															