



**TIC225A, TIC225B, TIC225C, TIC225D, TIC225E, TIC225M,
TIC225N, TIC225S**

SILICON BIDIRECTIONAL TRIODE THYRISTOR

- Sensitive gate triacs
- 8 A RMS
- 70 A Peak
- Glass Passivated Wafer
- 100 V to 800 V Off-State Voltage
- Max I_{GT} of 50 mA (Quadrants 1)
- Compliance to ROHS

DESCRIPTION

This device is a bidirectional triode thyristor (triac) which may be triggered from the off-state to the on-state by either polarity of gate signal with main Terminal 2 at either polarity.

ABSOLUTE MAXIMUM RATINGS

Symbol	Ratings	Value								Unit
		A	B	C	D	E	M	S	N	
V _{DRM}	Repetitive peak off-state voltage (see Note1)	100	200	300	400	500	600	700	800	V
I _{T(RMS)}	Full-cycle RMS on-state current at (or below) 70°C case temperature (see note2)	8								A
I _{TSM}	Peak on-state surge current full-sine-wave (see Note3)	70								A
I _{TSM}	Peak on-state surge current half-sine-wave (see Note4)	8								A
I _{GM}	Peak gate current	± 1								A
P _{GM}	Peak gate power dissipation at (or below) 85°C case temperature (pulse width ≤200 μs)	2.2								W
P _{G(AV)}	Average gate power dissipation at (or below) 85°C case (see Note5)	0.9								W
T _C	Operating case temperature range	-40 to +110								°C
T _{stg}	Storage temperature range	-40 to +125								°C
T _L	Lead temperature 1.6 mm from case for 10 seconds	230								°C

TIC225A, TIC225B, TIC225C, TIC225D, TIC225E, TIC225M, TIC225N, TIC225S

THERMAL CHARACTERISTICS

Symbol	Ratings	Value	Unit
$R_{\theta JC}$	Junction to case thermal resistance	≤ 2.5	$^{\circ}\text{C}/\text{W}$
$R_{\theta JA}$	Junction to free air thermal resistance	≤ 62.5	

ELECTRICAL CHARACTERISTICS

TC=25°C unless otherwise noted

Symbol	Ratings	Test Condition(s)	Min	Typ	Max	Unit
I_{DRM}	Repetitive peak off-state current	$V_D = \text{Rated } V_{DRM}, I_G = 0$ $T_C = 110^{\circ}\text{C}$	-	-	± 2	mA
I_{GT}	Gate trigger current	$V_{supply} = +12\text{ V}\dagger, R_L = 10\ \Omega, t_{p(g)} = > 20\ \mu\text{s}$	-	0.8	5	mA
		$V_{supply} = +12\text{ V}\dagger, R_L = 10\ \Omega, t_{p(g)} = > 20\ \mu\text{s}$	-	-4.5	-20	
		$V_{supply} = -12\text{ V}\dagger, R_L = 10\ \Omega, t_{p(g)} = > 20\ \mu\text{s}$	-	-3.5	-10	
		$V_{supply} = -12\text{ V}\dagger, R_L = 10\ \Omega, t_{p(g)} = > 20\ \mu\text{s}$	-	11.7	30	
V_{GT}	Gate trigger voltage	$V_{supply} = +12\text{ V}\dagger, R_L = 10\ \Omega, t_{p(g)} = > 20\ \mu\text{s}$	-	0.7	2	V
		$V_{supply} = +12\text{ V}\dagger, R_L = 10\ \Omega, t_{p(g)} = > 20\ \mu\text{s}$	-	-0.8	-2	
		$V_{supply} = -12\text{ V}\dagger, R_L = 10\ \Omega, t_{p(g)} = > 20\ \mu\text{s}$	-	-0.8	-2	
		$V_{supply} = -12\text{ V}\dagger, R_L = 10\ \Omega, t_{p(g)} = > 20\ \mu\text{s}$	-	0.9	2	
I_H	Holding current	$V_{supply} = +12\text{ V}\dagger, I_G = 0$ initiating $I_{TM} = 100\text{ mA}$	-	3	20	mA
		$V_{supply} = -12\text{ V}\dagger, I_G = 0$ initiating $I_{TM} = -100\text{ mA}$	-	-4.7	-20	
I_L	Latching current	$V_{supply} = +12\text{ V}\dagger$ (see Note 7)	-	-	30	mA
		$V_{supply} = -12\text{ V}\dagger$ (see Note 7)	-	-	-30	
V_{TM}	Peak on-state voltage	$I_{TM} = \pm 12\text{ A}, I_G = 50\text{ mA}$ (see Note 6)	-	± 1.6	± 2.1	V
dv/dt	Critical rate of rise of off-state voltage	$V_{DRM} = \text{Rated } V_{DRM}, I_G = 0$ $T_C = 110^{\circ}\text{C}$	-	± 50	-	V/ μs
dv/dt_{\odot}	Critical rise of communication voltage	$V_{DRM} = \text{Rated } V_{DRM}, I_{TRM} = \pm 12\text{ A}$ $T_C = 70^{\circ}\text{C}$	± 1	± 1.5	± 4.5	

† All voltages are with respect to Main Terminal 1.

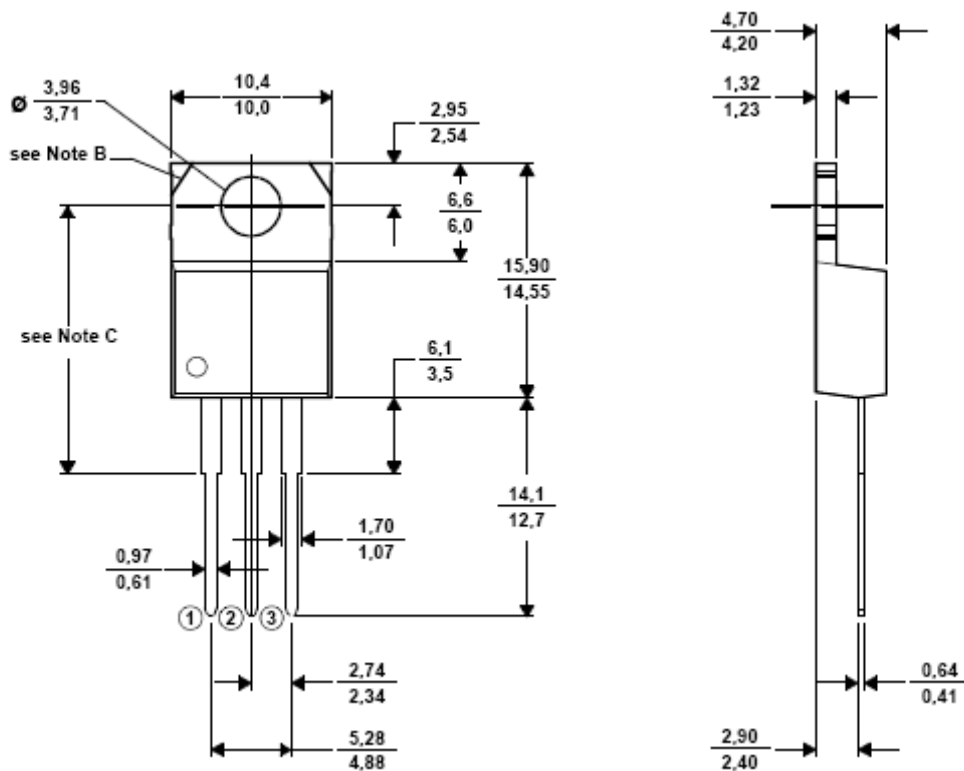
TIC225A, TIC225B, TIC225C, TIC225D, TIC225E, TIC225M, TIC225N, TIC225S

Notes:

1. These values apply bidirectionally for any value of resistance between the gate and Main Terminal 1.
2. This value applies for 50-Hz full-sine-wave operation with resistive load. Above 70°C derate linearly to 110°C case temperature at the rate of 200 mA/°C.
3. This value applies for one 50-Hz full-sine-wave when the device is operating at (or below) the rated value of on-state current. Surge may be repeated after the device has returned to original thermal equilibrium. During the surge, gate control may be lost.
4. This value applies for one 50-Hz half-sine-wave when the device is operating at (or below) the rated value of on-state current. Surge may be repeated after the device has returned to original thermal equilibrium. During the surge, gate control may be lost.
5. This value applies for a maximum averaging time of 20 ms.
6. This parameters must be measured using pulse techniques, $t_w = \leq 1\text{ms}$, duty cycle $\leq 2\%$, voltage-sensing contacts, separate from the current-carrying contacts are located within 3.2mm (1/8 inch) from de device body.
7. The triacs are triggered by a 15-V (open circuit amplitude) pulse supplied by a generator with the following characteristics : $R_G = 100\Omega$, $t_{p(g)} = 20\ \mu\text{s}$, $t_r = \leq 15\text{ns}$, $f = 1\ \text{kHz}$.

MECHANICAL DATA CASE TO-220

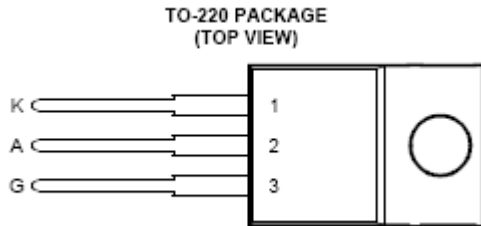
TO220





**TIC225A, TIC225B, TIC225C, TIC225D, TIC225E, TIC225M,
TIC225N, TIC225S**

PINNING



Pin 1 :	kathode
Pin 2 :	Anode
Pin 3 :	Gate

Pin 2 is in electrical contact with the mounting base.

Revised September 2012

Information furnished is believed to be accurate and reliable. However, Comset Semiconductors assumes no responsibility for the consequences of use of such information nor for any infringement of patents or other rights of third parties which may result from its use. Data are subject to change without notice. Comset Semiconductors makes no warranty, representation or guarantee regarding the suitability of its products for any particular purpose, nor does Comset Semiconductors assume any liability arising out of the application or use of any product and specifically disclaims any and all liability, including without limitation consequential or incidental damages. Comset Semiconductors' products are not authorized for use as critical components in life support devices or systems.