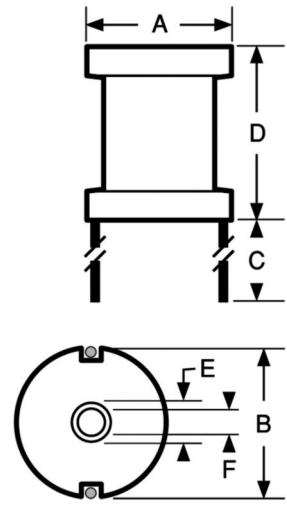
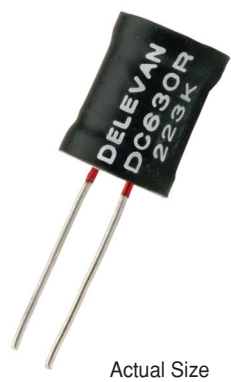


SERIES

DC630R
DC630



High Current Power Line Chokes



Physical Parameters

	Inches	Millimeters
A	0.630 ± 0.030	16.0 ± 0.762
B (C/L to C/L)	See Characteristics table	
C	0.750 Min.	19.05 Min.
D	0.810 ± 0.020	20.57 ± 0.508
E (Ref. only)	0.195 Max.	4.95 Max.
F	Clearance Hole for 4/40 Screw	

Leads Tinned to within 1/16" of Body

Inductance

Measured @ 10 KHz, 25mAdc and 0 Adc @ 25°C

Mechanical Configuration

Center hole allows for mechanical mounting

Operating Temperature

-55°C to +125°C;
-55°C to +80°C @ full rated current

Current Rating at 80°C Ambient

45°C Rise

Incremental Current

Minimum current which causes a 5% max. change in Inductance

Power Dissipation at 80°C

1.00 Watts Max.

Dielectric Withstanding Voltage

1000 V RMS Min.

Marking

DELEVAN; DC630; dash number with tolerance letter. Note: An R after DC630 indicates a RoHS component.

Example: DC630-102M

- DELEVAN
- DC630
- 102M

Packaging

Bulk only

DASH NUMBER*	NOMINAL INDUCTANCE (µH)	MAXIMUM TOLERANCE	DC RESISTANCE MAXIMUM (OHMS) @ 25°C	CURRENT RATING MAXIMUM (A DC)	INCREMENTAL CURRENT (A DC)	DIMENSION B (Inches, Reference)	LEAD DIAMETER (Inches, Reference)
--------------	-------------------------	-------------------	-------------------------------------	-------------------------------	----------------------------	---------------------------------	-----------------------------------

SERIES DC630							
-102M	1.0	± 20%	0.003	14.00	68.0	0.490	0.051
-152M	1.5	± 20%	0.004	13.50	55.5	0.490	0.051
-222M	2.2	± 20%	0.005	12.80	46.0	0.490	0.051
-272M	2.7	± 20%	0.005	12.80	42.0	0.490	0.051
-332M	3.3	± 20%	0.005	12.80	38.0	0.490	0.051
-392M	3.9	± 20%	0.006	12.30	34.5	0.490	0.051
-472M	4.7	± 20%	0.007	11.70	31.5	0.490	0.051
-562M	5.6	± 20%	0.007	11.70	29.0	0.490	0.051
-682M	6.8	± 20%	0.008	10.50	26.0	0.490	0.051
-822M	8.2	± 20%	0.009	10.00	24.0	0.490	0.051
-103K	10.0	± 10%	0.010	9.50	21.5	0.490	0.051
-123K	12.0	± 10%	0.011	9.10	19.5	0.490	0.051
-153K	15.0	± 10%	0.015	8.09	17.5	0.470	0.045
-183K	18.0	± 10%	0.020	7.00	16.0	0.460	0.040
-223K	22.0	± 10%	0.025	6.26	14.5	0.460	0.040
-273K	27.0	± 10%	0.030	5.72	13.2	0.440	0.036
-333K	33.0	± 10%	0.040	4.95	11.9	0.430	0.032
-393K	39.0	± 10%	0.050	4.43	10.9	0.420	0.029
-473K	47.0	± 10%	0.062	3.98	10.0	0.480	0.029
-563K	56.0	± 10%	0.069	3.77	9.20	0.480	0.029
-683K	68.0	± 10%	0.077	3.57	8.30	0.480	0.029
-823K	82.0	± 10%	0.083	3.44	7.60	0.480	0.029
-104K	100	± 10%	0.095	3.21	6.80	0.480	0.029
-124K	120	± 10%	0.100	3.12	6.20	0.480	0.029
-154K	150	± 10%	0.111	2.97	5.60	0.480	0.029
-184K	180	± 10%	0.125	2.80	5.10	0.480	0.029
-224K	220	± 10%	0.168	2.42	4.60	0.470	0.025
-274K	270	± 10%	0.225	2.09	4.20	0.450	0.023
-334K	330	± 10%	0.315	1.72	3.80	0.450	0.020
-394K	390	± 10%	0.342	1.66	3.40	0.480	0.020
-474K	470	± 10%	0.377	1.58	3.10	0.480	0.020
-564K	560	± 10%	0.408	1.52	2.90	0.480	0.020
-684K	680	± 10%	0.468	1.42	2.60	0.480	0.020

*Complete part # must include series # PLUS the dash #
For surface finish information, refer to www.delevanfinishes.com