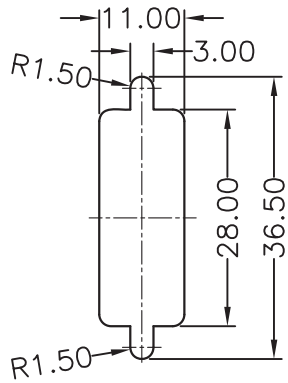
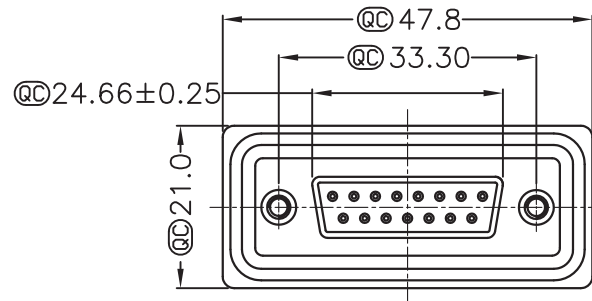
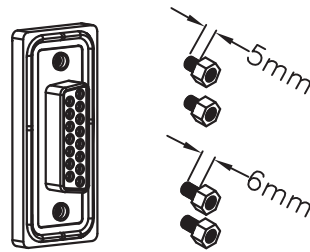
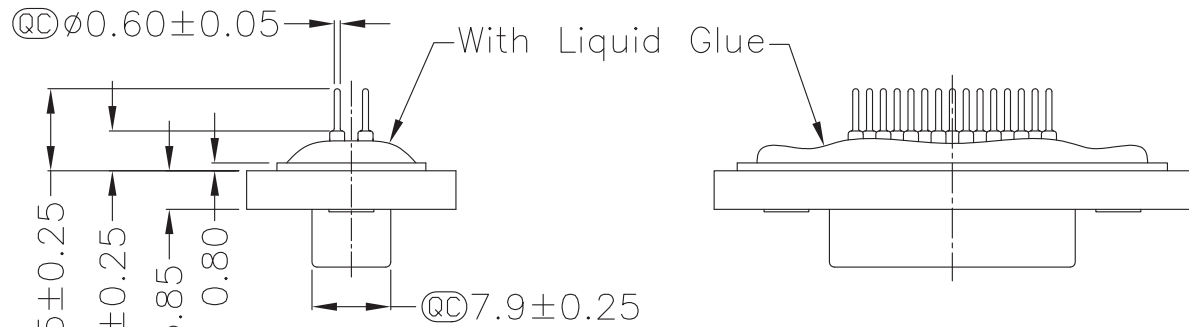


Screw L=5.0 For Panel Thickness Under 1.2 mm

Screw L=6.0 For Panel Thickness Between 1.2 mm~2.0mm



Recommended Panel Cut-Out



Material:

- Waterproof Rating: IP67
 - 1M of depth of water 24 hours
 - Do Mating Test After Glued
- DSub Connector: Black Core, PBT
- Plastic Jacket Black, Nylon+GF
- Pin: Copper Alloy, Gold Plated
- Ring: Light Blue, Silicone
- Screw: Copper Alloy, Nickel Plated, #4-40 UNC

QC Quality Control: Important Dimension to check
Unit: MM ± 0.1 MM

Ⓜ = Assmann logo



ITEM NO.

A-DF15PP-WP-R

TITLE

Waterproof DSub Connector - Straight Pin,
for PCB Mount, 15 Contacts Female



1840 W. Drake Drive, Suite 101 • Tempe, AZ 85283
Toll Free: 1-877-277-6266 • Email: info@assmann.us

THIS DRAWING IS UNPUBLISHED
©Copyright 2011 by Assmann WSW components
All International Rights Reserved