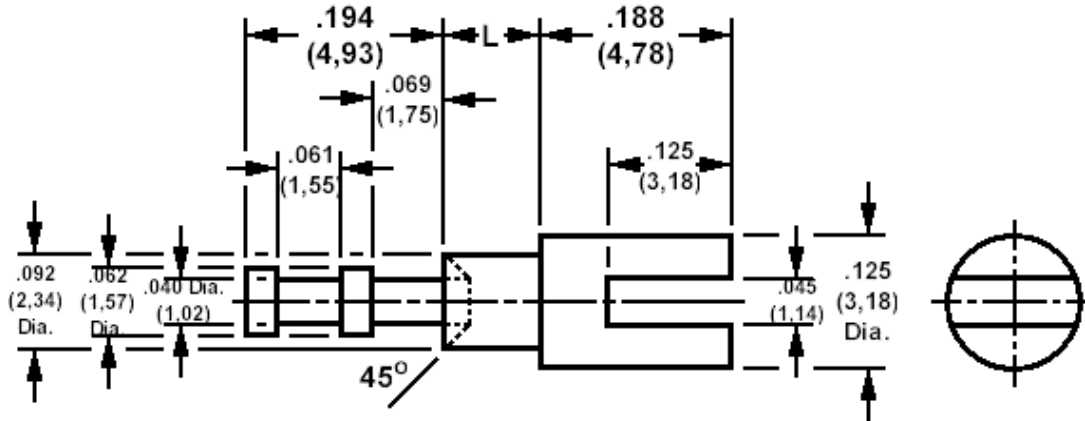


140-1033 Solder terminal, slotted, feed thru

Recommended mounting hole .096 (2.44), #41 drill



How to order code

140-1033-XX-YY-00

Basic Part No XX = L dimension, YY = Plating Finish

| DIMENSIONS (XX) | | | |
|-----------------|-----|-------------|-----------------|
| Basic Part No | | L | Board Thickness |
| 140-1033 | -02 | .094 (2,39) | .062 (1,59) |
| | -03 | .125 (3,18) | .094 (2,38) |
| | -04 | .156 (3,96) | .125 (3,18) |

| MATERIALS | | | | |
|-----------|----------|-------------|-------------|----------------|
| Component | Material | Finish (YY) | | |
| | | -01 | -04 | -05 |
| Terminal | Brass | Silver | Electro tin | Electro Solder |

| SWAGE TOOLING | |
|-----------------------------|-------------------|
| Recommended Swaging Tools:- | |
| Anvil | 435-6417-01-00-00 |
| Roll punch | 435-6654-01-00-00 |