

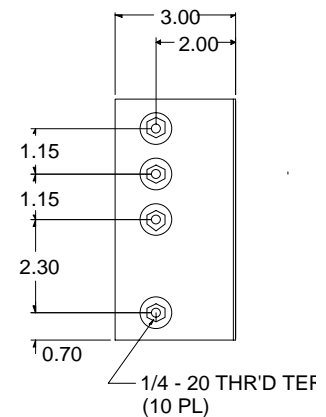
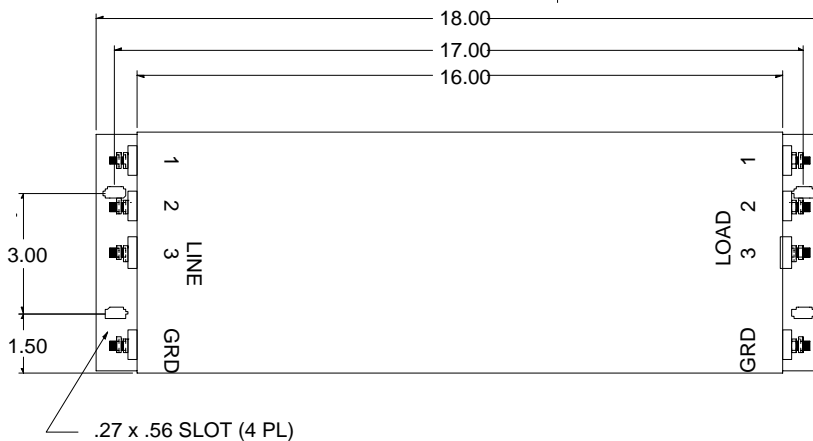
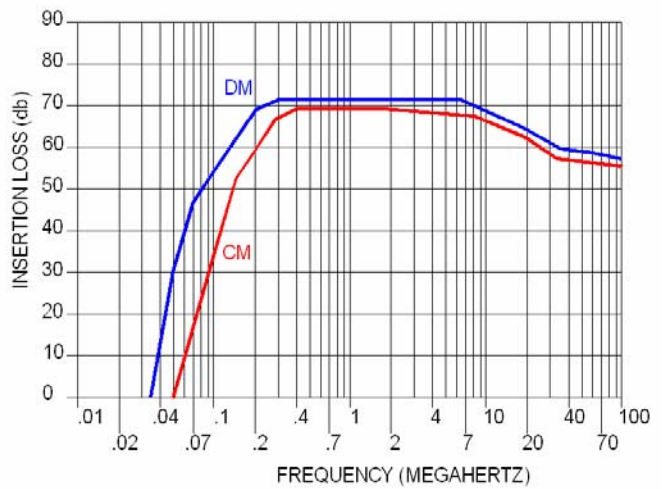
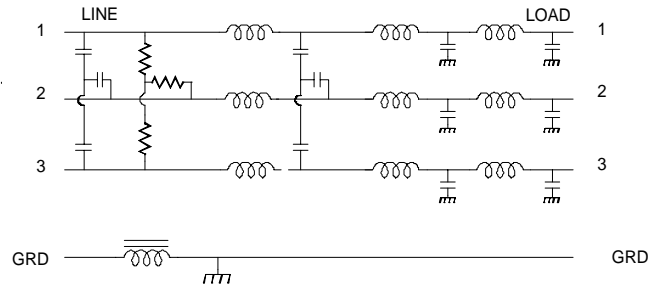


MM-1315-100

Operating Voltage _____ 250/480 V~,
 50 / 60 Hz
 Operating Voltage _____ 125/208 V~,
 50 – 400 Hz
 Operating Current _____ 100 A / Phase
 Temperature Range _____ -20 TO 50 Deg. C
 Diel. Withstand (L-CASE) _____ 1500 V~
 FOR 1 MIN.
 Diel. Withstand (L-L) _____ 2200 Vdc
 For 1 Min.
 Leakage Current _____ 18 ma (max)
 @ 250 V~, 60 Hz
 Resid.Volt after 3.0 second _____ 20 V Max.
 Max. Cap. each line to case _____ 0.10 uF

Order P/N: MM-1315-100

The Mm-1315-100 filter is designed for use with large computer or motor installations where heavy current is drawn continuously. This filter can handle large in-rush current typical of modern power supplies. When data lines or power is shared with other systems the ground coil helps breakup ground loops which can cause system errors and also increase conducted RF



USA JMK Inc 15 Caldwell Dr. Amherst, NH 03031 PH: 603 886-4100 FX: 603 886-4115
 email: info@jmkfilters.com
 EUR JMK Ltd Dumbarton G82 2TS Scotland UK PH: 44-(0) 1389-751841 FX: 44-(0) 1389-751841