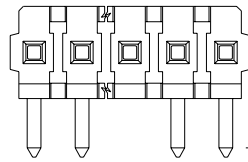
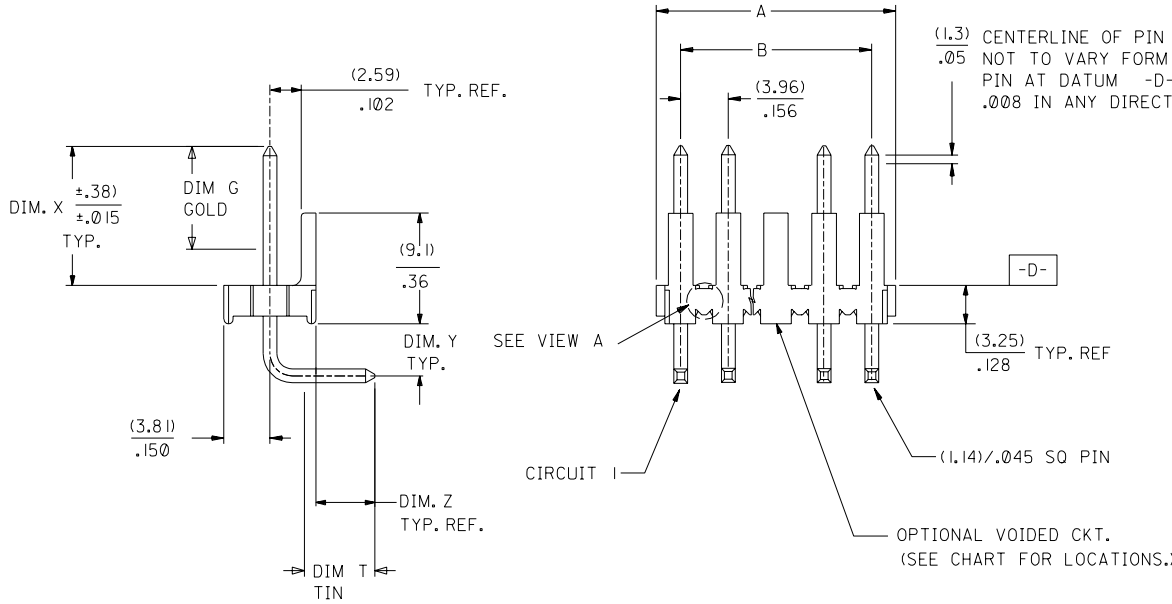


VIEW A



(1.3)  
.05  
CENTERLINE OF PIN IN AREA SHOWN NOT TO VARY FROM CENTERLINE OF PIN AT DATUM -D- BY MORE THAN .005 IN ANY DIRECTION

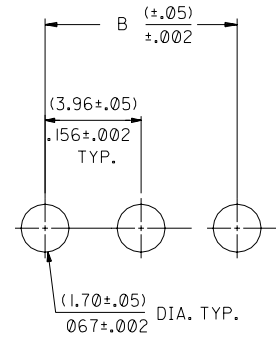
A-41682- \*N\* \*-\*  
PACKAGING AND OPTIONS  
NO. OF CKTS  
PIN DIMENSIONS  
VOID LOCATIONS  
BLANK=NO VOIDS  
NO.=CKT. NO. VOIDED  
MULT. VOIDS START WITH 51  
PLATING



(1.3)  
.05  
CENTERLINE OF PIN IN AREA SHOWN NOT TO VARY FROM CENTERLINE OF PIN AT DATUM -D- BY MORE THAN .008 IN ANY DIRECTION

-D-

OPTIONAL VOIDED CKT.  
(SEE CHART FOR LOCATIONS.)



PCB LAYOUT: COMPONENT SIDE  
RECOMMENDED PCB THICKNESS:  
(1.57±.18)/.062±.007

B	A	CIRCUIT
( 3.96 )	( 6.78 / 7.87 )	2
.156	.267 / .310	
( 7.92 )	( 10.74 / 11.84 )	3
.312	.423 / .466	
( 11.89 )	( 14.71 / 15.80 )	4
.468	.579 / .622	
( 15.85 )	( 18.67 / 19.76 )	5
.624	.735 / .778	
( 19.81 )	( 22.63 / 23.72 )	6
.780	.891 / .934	
( 23.77 )	( 26.59 / 27.69 )	7
.936	1.047 / 1.090	
( 27.74 )	( 30.56 / 31.65 )	8
1.092	1.203 / 1.246	
( 31.70 )	( 34.52 / 35.61 )	9
1.248	1.359 / 1.402	
( 35.66 )	( 38.48 / 39.57 )	10
1.404	1.515 / 1.558	
( 39.62 )	( 42.44 / 43.54 )	11
1.560	1.671 / 1.714	
( 43.59 )	( 46.41 / 47.50 )	12
1.716	1.827 / 1.870	
( 47.55 )	( 50.37 / 51.46 )	13
1.872	1.983 / 2.026	
( 51.51 )	( 54.33 / 55.42 )	14
2.028	2.139 / 2.182	
( 55.47 )	( 58.29 / 59.39 )	15
2.184	2.295 / 2.338	
( 59.44 )	( 62.26 / 63.35 )	16
2.340	2.451 / 2.494	
( 63.40 )	( 66.22 / 67.31 )	17
2.496	2.607 / 2.650	
( 67.36 )	( 70.18 / 71.27 )	18
2.652	2.763 / 2.806	
( 71.32 )	( 74.14 / 75.23 )	19
2.808	2.919 / 2.962	
( 75.29 )	( 78.11 / 79.20 )	20
2.964	3.075 / 3.118	
( 79.25 )	( 82.07 / 83.16 )	21
3.120	3.231 / 3.274	
( 83.21 )	( 86.03 / 87.12 )	22
3.276	3.387 / 3.430	
( 87.17 )	( 89.94 / 91.08 )	23
3.432	3.541 / 3.586	
( 91.14 )	( 93.85 / 95.00 )	24
3.588	3.695 / 3.740	

NOTES:

- SOLDERABILITY: WHEN PARTS ARE SOLDERED AT A TEMPERATURE OF (230°C) OR 446°F FOR 5 SECONDS EACH SOLDERED SURFACE SHALL BE A MINIMUM OF 95% COVERED WITH A SMOOTH CONTINUOUS ADHERENT COATING. FOR OTHER INFORMATION SEE SMES-I52
- PIN PUSH OUT FORCE: PRIOR TO SOLDERING, A 3 LB MINIMUM FORCE (IN EITHER DIRECTION) SHALL BE REQUIRED TO PUSH THE PIN OUT OF THE HEADER.
- MATERIAL: HEADER GLASS FILLED POLYESTER, 94V-0, MOLDED BLACK
- THIS PART CONFORMS TO PRODUCT SPEC PS-08-50
- PARTS ARE STACKABLE END TO END ON .156 CENTERS. (SPACING TABS MUST BE REMOVED ON CIRCUIT SIZES 1 THROUGH 23 BEFORE PARTS ARE STACKABLE.)
- FINISH: SEE SDES-88  
 (102) OVERALL TIN: .00508 MICROMETERS MIN OVER .00254 MICROMETERS MIN COPPER.  
 (208) SELECT GOLD: .00038 MICROMETERS MIN,  
 \*SELECT TIN: .00254 MICROMETERS MIN,  
 OVERALL NICKEL UNDERPLATE: .00127 MICROMETERS MIN.  
 (228) SELECT GOLD: .00076 MICROMETERS MIN,  
 \*SELECT IN: .00254 MICROMETERS MIN,  
 OVERALL NICKEL UNDERPLATE: .00127 MICROMETERS MIN.  
 \*THE PRIMARY SHIPPING CARTON WILL BE LABELED "COMPLIANT TO ROHS DIRECTIVE 2002/95/EC AND ELV ANNEX II OF DIRECTIVE 2000/53/EC". CARTONS WITHOUT THIS LABEL MAY CONTAIN PRODUCT WITH TIN/LEAD PLATINGS.

DIMENSIONS SHOWN (METRIC) INCH UNLESS OTHERWISE SPECIFIED TOLERANCES: ANGULAR ± 1/2°		▽ = 0 ▼ = 0 REVISE ONLY ON CAD SYSTEM	
3 PLACE ±		TITLE	
2 PLACE ±		BREAKAWAY HEADER ASSEMBLY .156" POLARIZING RIGHT ANGLE 41682 SERIES DWG.	
1 PLACE ±		MOLEX INCORPORATED SHEET NO. DATE LISLE, ILL. 60532 U.S.A. 1 OF 4 08/08/85	
DRAFT WHERE APPLICABLE MUST REMAIN WITHIN DIMENSIONS		PART NO. DRWG. NO. SDA-41682	
DRWG. BY: SAMIEC		FILE NAME: S41682X1	
CHK'D. BY: PATEL		THIS DRAWING CONTAINS INFORMATION THAT IS PROPRIETARY TO MOLEX INC. AND SHOULD NOT BE USED WITHOUT WRITTEN PERMISSION.	
APP'D. BY: LENZ		DIV. SIZE: KK C	
SCALE: --:--			

41682

C

D

B

A

4	AD
3	AD
2	AE
1	AE

MFG. SH. REV.

13		12		11		10		9		8		7		6		41682		4		3		2		1	
ENG. NUMBERS		PIN NUMBER		PLT	DIM L	DIM X	DIM G GOLD	DIM Y	DIM Z	DIM T TIN	ANG W	PACKAGING													
A-41682-ANA102-*		2161-19(102)		102	(26.21) 1.032	(11.43) .450	( ) N/A	(3.73 ) .147	(5.26 ) .207	( ) OVERALL	90°	BULK PK-41682-001													
A-41682-BNF208-*		43294-0497		208	(26.16) 1.030	(11.43) .450	(6.86 ) .270	(3.68 ) .145	(5.26 ) .207	(4.83 ) .190	90°	BULK PK-41682-001													
A-41682-BNF228-*		43294-0498		228	(26.16) 1.030	(11.43) .450	(6.86 ) .270	(3.68 ) .145	(5.26 ) .207	(4.83 ) .190	90°	BULK PK-41682-001													
		-			( )	( )	( )	( )	( )	( )															
		-			( )	( )	( )	( )	( )	( )															

A-41682-ANA102-*			A-41682-ANA102-*			A-41682-BNF208-*			A-41682-BNF228-*			COLUMN NO. 6		
EDP NO.	ENG. NO.	VOIDS	EDP NO.	ENG. NO.	VOIDS	EDP NO.	ENG. NO.	VOIDS	EDP NO.	ENG. NO.	VOIDS	EDP NO.	ENG. NO.	VOIDS
26-48-1024	-A2A102		26-50-6064	-A6A102-4	4	41682-0001	-B02F208		41682-0024	-B02F228				
26-48-1034	-A3A102					41682-0002	-B03F208		41682-0025	-B03F228				
26-48-1044	-A4A102					41682-0003	-B04F208		41682-0026	-B04F228				
26-48-1054	-A5A102					41682-0004	-B05F208		41682-0027	-B05F228				
26-48-1064	-A6A102					41682-0005	-B06F208		41682-0028	-B06F228				
26-48-1074	-A7A102					41682-0006	-B07F208		41682-0029	-B07F228				
26-48-1084	-A8A102					41682-0007	-B08F208		41682-0030	-B08F228				
26-48-1094	-A9A102					41682-0008	-B09F208		41682-0031	-B09F228				
26-48-1104	-A10A102					41682-0009	-B10F208		41682-0032	-B10F228				
26-48-1114	-A11A102					41682-0010	-B11F208		41682-0033	-B11F228				
26-48-1124	-A12A102					41682-0011	-B12F208		41682-0034	-B12F228				
26-48-1134	-A13A102					41682-0012	-B13F208		41682-0035	-B13F228				
26-48-1144	-A14A102					41682-0013	-B14F208		41682-0036	-B14F228				
26-48-1154	-A15A102					41682-0014	-B15F208		41682-0037	-B15F228				
26-48-1164	-A16A102					41682-0015	-B16F208		41682-0038	-B16F228				
26-48-1174	-A17A102					41682-0016	-B17F208		41682-0039	-B17F228				
26-48-1184	-A18A102					41682-0017	-B18F208		41682-0040	-B18F228				
26-48-1194	-A19A102					41682-0018	-B19F208		41682-0041	-B19F228				
26-48-1204	-A20A102					41682-0019	-B20F208		41682-0042	-B20F228				
26-48-1214	-A21A102					41682-0020	-B21F208		41682-0043	-B21F228				
26-48-1224	-A22A102					41682-0021	-B22F208		41682-0044	-B22F228				
26-48-1234	-A23A102					41682-0022	-B23F208		41682-0045	-B23F228				
26-48-1244	-A24A102					41682-0023	-B24F208		41682-0046	-B24F228				
26-50-6103	-A10A102-3	3												
26-50-6108	-A10A102-8	8												
26-50-6241	-A24A102-51	5,13												
26-50-6063	-A6A102-3	3												
26-50-6154	-A15A102-4	4												
26-50-6181	-A18A102-51	5,7,9 11												
26-50-6161	-A16A102-10	10												
26-50-6050	-A5A102-51	2,4												
26-50-6166	-A16A102-6	6												
26-50-6051	-A5A102-2	2												
26-50-6052	-A5A102-4	4												
26-50-6076	-A7A102-6	6												
26-50-6140	-A14A102-12	12												

ALL PARTS WITHOUT VOIDS ON THIS SHEET ARE STANDARD PRODUCTS

SEE SHEET I	AC	SEE SHEET I	DIMENSIONS SHOWN (METRIC) INCH UNLESS OTHERWISE SPECIFIED TOLERANCES: ANGULAR ± 1/2° INCH METRIC 3 PLACE ± ± 2 PLACE ± ± 1 PLACE ± ± DRAFT WHERE APPLICABLE MUST REMAIN WITHIN DIMENSIONS DRWG. SAMIEC CHK'D. BY PATEL APP'D. LENZ SCALE :	SEE SHEET I	AB	SEE SHEET I	REVISIONS LTR. REVISIONS LTR.
SEE SHEET I	V5	SEE SHEET I					
SEE SHEET I	V4	SEE SHEET I					
AE	R	SEE SHEET I					
AD	P	SEE SHEET I					
ACI	N	SEE SHEET I					

DIMENSIONS SHOWN (METRIC) INCH UNLESS OTHERWISE SPECIFIED TOLERANCES: ANGULAR ± 1/2° INCH METRIC 3 PLACE ± ± 2 PLACE ± ± 1 PLACE ± ± DRAFT WHERE APPLICABLE MUST REMAIN WITHIN DIMENSIONS DRWG. SAMIEC CHK'D. BY PATEL APP'D. LENZ SCALE :	REVISIONS LTR. REVISIONS LTR.	THIS DRAWING CONTAINS INFORMATION THAT IS PROPRIETARY TO MOLEX INC. AND SHOULD NOT BE USED WITHOUT WRITTEN PERMISSION.
--	-------------------------------	---

TITLE: BREAKAWAY HEADER ASSEMBLY .156Q POLARIZING RIGHT ANGLE 41682 SERIES DWG.  
 PART NO. SEE CHART SDA-41682  
 SHEET NO. 2 DATE 08/09/85  
 U.S.A. MOLEX INCORPORATED LITTLE, ILL. 60532  
 DIV. KK SIZE C