

| | | | | | | | | | | | | |
|------------|-------------|------------|-----------|---|---|---|---|---|---|---|---|---|
| 13 | 12 | 11 | 10 | 9 | 8 | 7 | 6 | 5 | 4 | 3 | 2 | 1 |
| PLUG | | RECEPTACLE | | | | | | | | | | |
| ORDER NO | ENG NO | ORDER NO | ENG NO | | | | | | | | | |
| 03-09-2028 | 1816-2P | 03-09-1028 | 1816-2R | | | | | | | | | |
| 03-09-7028 | 1816-2PBK | 03-09-6028 | 1816-2RBK | | | | | | | | | |
| 03-09-7029 | 1816-2PBK-B | | | | | | | | | | | |

LEGEND:

1816-2***-*

CIRCUIT SIZE

P = PLUG
R = RECEPTACLE

NOTES:

- MOLEX PRODUCT SPEC 02-09 APPLIES.
- FOR USE WITH MOLEX .093/(2.36) SERIES TERMINALS.

MATERIAL:

BLANK = NYLON 6/6, 94V-2, PER SMES-128-A-*

B = NYLON 6/6, 94V-2, HEAT STABILIZED, PER SMES-128-0-1

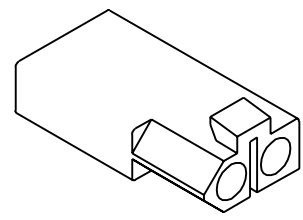
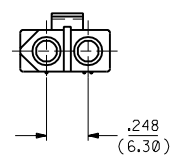
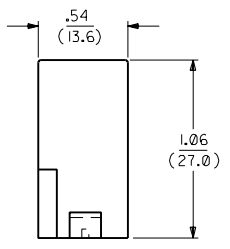
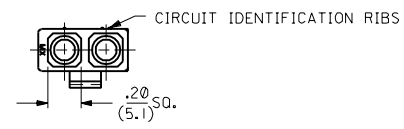
COLOR:

BLANK = NATURAL COLOR

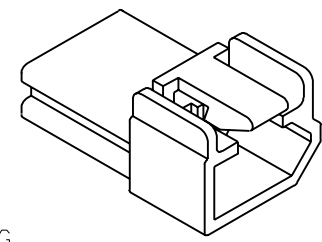
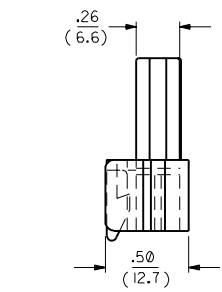
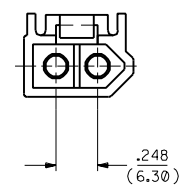
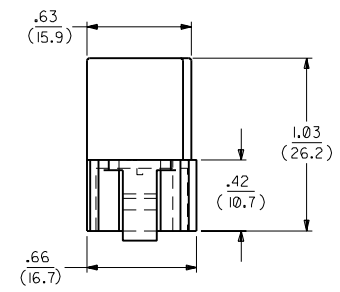
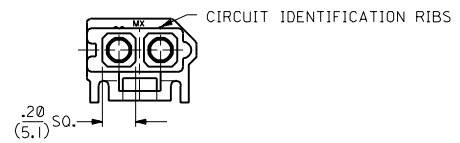
AM = AMBER BK = BLACK BU = BLUE

BN = BROWN GY = GRAY GN = GREEN

OR = ORANGE RD = RED YW = YELLOW



RECEPTACLE



PLUG

| | | |
|----|--|----|
| C1 | ADD RADII PER ECR U2 1817 GC 12/23/92 | RW |
| C | REVISE PER ECR U2 1105 GC 7/29/92 | RW |
| B1 | REVISE PER ECR U2 0825 GC 5/28/92 | RW |
| B | REVISED & REDRAWN ECR * U81903 KBW 9-29-88 | |

| | | | | | | | |
|--|--------|---|--|--------------|--|---------------------------|--|
| DIMENSIONS SHOWN METRIC (INCH) | | UNLESS OTHERWISE SPECIFIED TOLERANCES: ANGULAR ± 1/2° | | TITLE | | REVISE ONLY ON CAD SYSTEM | |
| INCH | METRIC | .093/(2.36) HOUSINGS PLUG & RECEPTACLE | | | | SHEET NO. DATE | |
| 3 PLACE ± .010 | --- | 2 CIRCUIT, .248/(6.30)C | | | | 1 OF 1 09/20/88 | |
| 2 PLACE ± .014 | ± 0.25 | MOLEX INCORPORATED | | | | L15LEJLL 60532 U.S.A. | |
| 1 PLACE --- | ± 0.35 | PART NO. SEE CHART | | | | DRAWING NO. SD-1816-2* | |
| DRAFT WHERE APPLICABLE MUST REMAIN WITHIN DIMENSIONS | | APP'D: KBW | | CHK'D: RAS | | FILE NAME: M18162.S84 | |
| SCALE: 2 : 1 | | APP'D: RAS | | SCALE: 2 : 1 | | DIV. SIZE: CP C | |