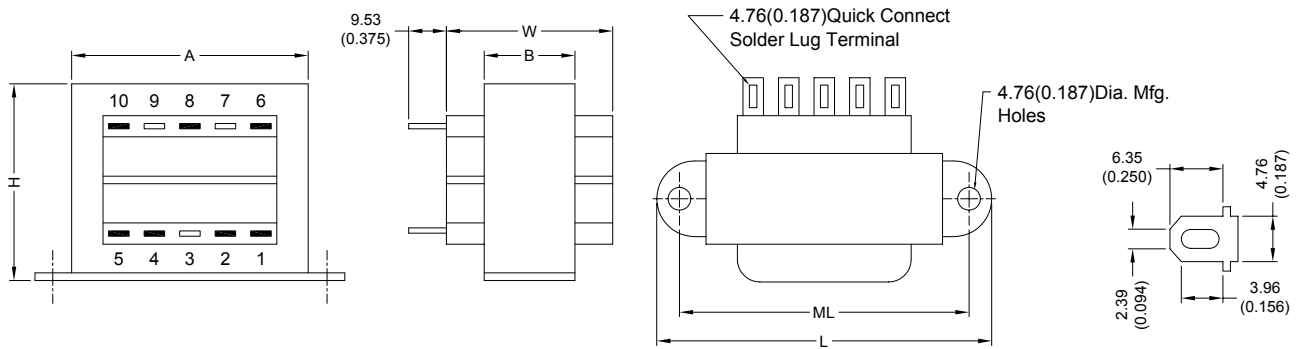


POWER TRANSFORMER

DCS8-56 (F) SERIES

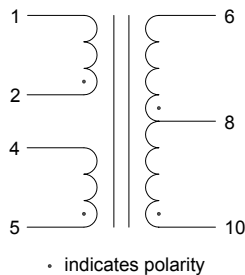
1. CONFIGURATION & DIMENSIONS :



UNIT : mm (inch)

SIZE	VA	L	W	H	A	B	ML	gram
8	100	102.40 (4.031)	57.15 (2.250)	65.10 (2.563)	77.80 (3.063)	33.35 (1.313)	90.50 (3.563)	1247.38

2. SCHEMATIC :



3. ELECTRICAL CHARACTERISTICS (@ 25°C) :

- | | |
|--------------------------------------|------------------------------|
| a. Primary Voltage | AC 115/230 V 50/60 Hz . |
| b. No Load Primary Current | Less Than 85mA / 130mA . |
| c. Secondary Voltage (±5%) | |
| Pin 6-10 C.T. Pin 8 | AC 62.40 V / 62.00 V . |
| d. Secondary Load Current | 2.00A . |
| e. Full Load Primary Current | Less Than 1.10mA / 0.60mA . |
| f. Full Load Secondary Voltage (±5%) | 56.00V / 56.00V . |
| Pin 6-10 C.T. Pin 8 | |
| g. DC Resistance | |
| Pin 1-2 | Primary-1 = 7.93 Ohm . |
| Pin 4-5 | Primary-2 = 9.48 Ohm . |
| Pin 6-8 | Secondary-1 = 0.73 Ohm . |
| Pin 8-10 | Secondary-2 = 0.83 Ohm . |
| h. Insulation Resistance | DC 500V 100Meg Ohm Of More . |
| i. Withstand Voltage (Hi-Pot) | AC 2500V 60Hz 1 Minutes . |
| j. Temperature Rise | Less Than 60 Deg C . |
| k. Core Size | EI-76 x 32.50 m/m . |

l. Turns & Wire Gauge

Primary-1	Pin 1-2	40S	Turns Diameter	0.40 mm
Primary-2	Pin 4-5	40S	Turns Diameter	0.40 mm
	Pin 6-8-10	0-111-222	Turns Diameter	0.70 mm



RoHS Compliant

NOTE : Specifications subject to change without notice. Please check our website for latest information.

25.02.2008



SUPERWORLD ELECTRONICS (S) PTE LTD

PG. 1