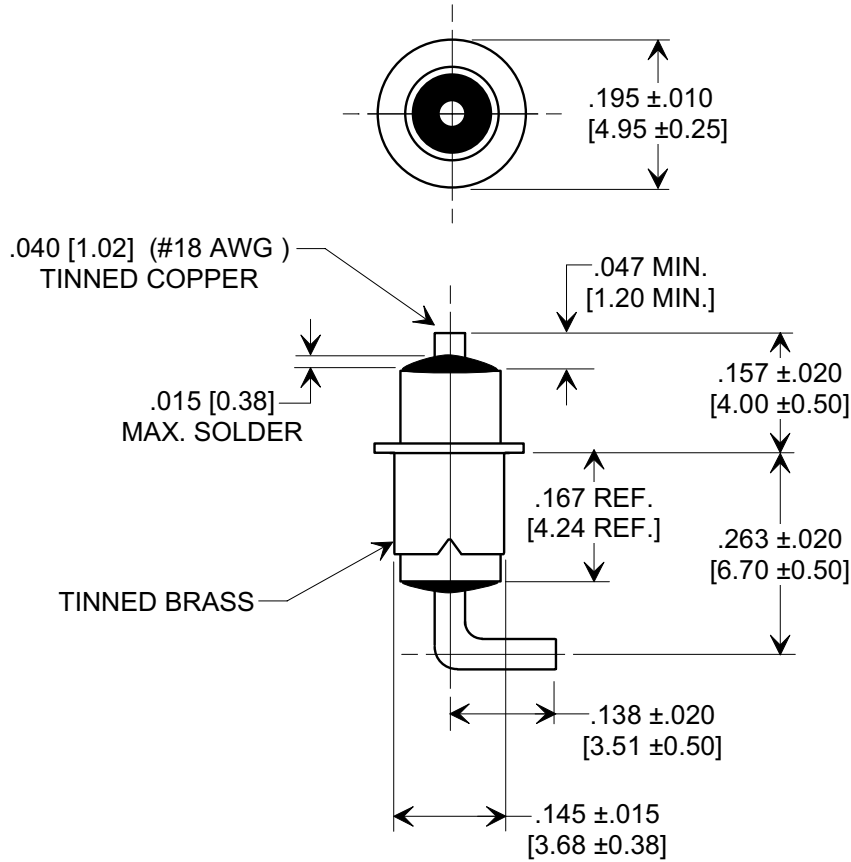
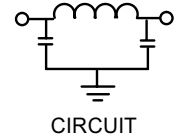
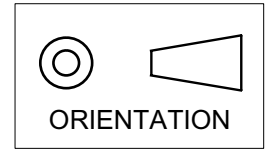


MARKETING SALES DRAWING

DIMENSIONS IN INCHES - DO NOT SCALE THIS DRAWING
 DIMENSIONS IN METRIC - []

Electrical Testing
 per Tusonix standard
 test plans and Mil-Std-202
 Test Methods.



MIN. CAP. (pF)	WORKING VOLTAGE		CURRENT Idc.	MINIMUM NO LOAD INSERTION LOSS (dB) AT 25°C PER MIL-STD-220			
	85°C	125°C		10 MHz	100 MHz	1 GHz	10 GHz
3000	250 VDC	125 VDC	15A	5	35	50	50

X-2015 Rev-0	REVISION RECORD			--TOLERANCES-- Unless Otherwise Specified	Title	
	0	1	2		EYELET STYLE EMI FILTER Drawn S.M. 08-10-00 Scale 4 X Approved T.C. 04-04-01	
	Original Release C.O.	ADDED BEND TO LEAD & DIM. .015. S.M. 03-08-01	WAS SK 7821-000 L.E. 09-14-01	TUSONIX TUCSON, ARIZONA		
	20010912-2-03	DIM. .263 WAS .276. S.M. 02-11-02	20010912-2-03	A		

4101-066