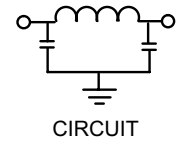
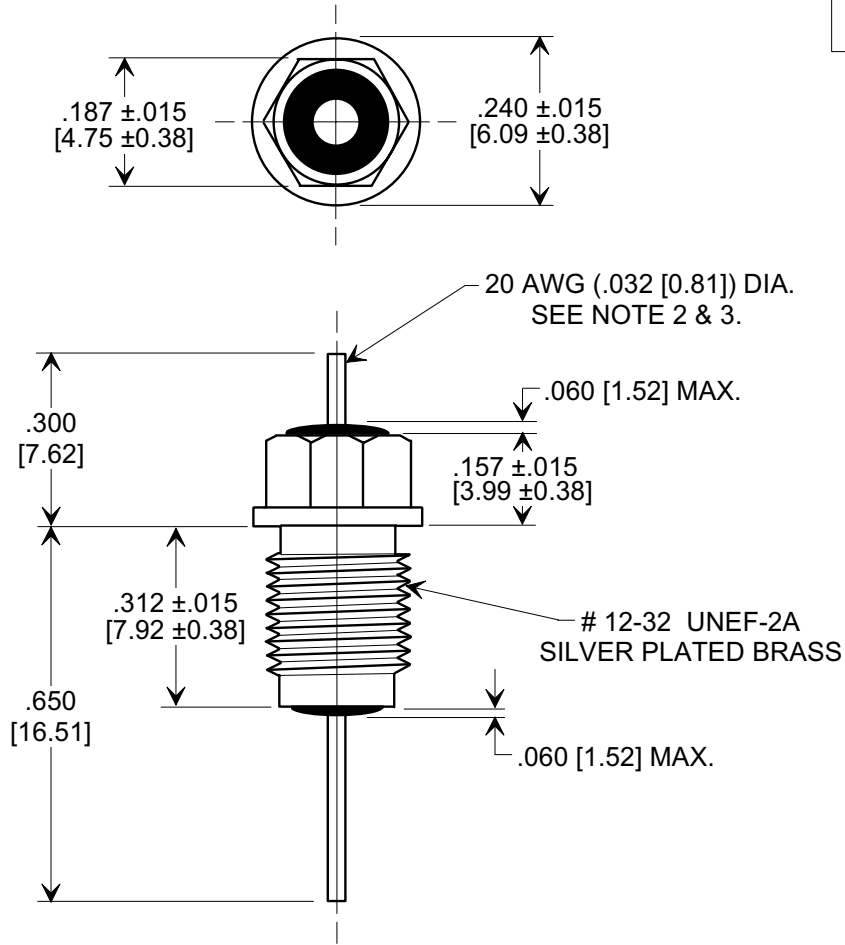
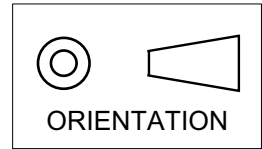


Electrical Testing  
per Tusonix standard  
test plans and Mil-Std-202  
Test Methods.

**MARKETING SALES DRAWING**  
**DIMENSIONS IN INCHES - DO NOT SCALE THIS DRAWING**  
**DIMENSIONS IN METRIC - [ ]**



NOTES:

- TUSONIX STANDARD PART NUMBER: 4203-067.  
TUSONIX RoHS COMPLIANT PART NUMBER: 4203-067 LF.  
CUSTOMER MUST SPECIFY STANDARD OR RoHS PART NUMBER WHEN ORDERING.
- LEAD MATERIAL: COPPER CLAD STEEL.
- LEAD FINISH: STANDARD PART #: 60/40 SOLDER PLATED. RoHS PART #: SILVER PLATED.
- PART MARKING: TRADEMARK AND VARIATION NUMBER ON HEX FLATS.  
STANDARD PART: BLACK INK. RoHS PART: GREEN INK.

MIN. CAP. (pF)	WORKING VOLTAGE (WVdc)		CURRENT IDC	I.R. MIN. @ 100 (VDC.)	DWV (VDC)	MINIMUM NO LOAD INSERTION LOSS (dB) AT 25°C PER MIL-STD -220			
	85°C	125 °C				10 MHz	100 MHz	1 GHz	10 GHz
5000	200	100	10 A	10 G Ω	400	20	65	70	70

REVISION RECORD Original Release C.O. <b>20010502-2-01</b> ADDED IR & DWV. ADDED AND REVISED NOTES.S.M. 11-15-05 <b>20051027-3-07</b>	<b>0</b>	<b>1</b>	TOLERANCES unless otherwise specified 2 PLC. DECIMAL ± N/A 3 PLC. DECIMAL ± .031 [0.79]		Title <b>BUSHING STYLE EMI FILTER</b>	
	ANGLES ± N/A		Drawn S.M. 05-03-01			
	<b>TUSONIX</b> TUCSON, ARIZONA		Approved T.C. 05-03-01			
			<b>A</b>	<b>4203-067</b>		

X-2015 Rev-0