

6

5

4

3

2

1

MATERIAL AND FINISH:

Insulator: Polycarbonate, UL-94V-0 rated  
Contacts: Copper, Tin plated

ELECTRICAL SPECIFICATIONS:

Current rating: 10 A  
Voltage rating: 250 VAC  
Insulation resistance: 100 Mohm min. at 500 VDC  
Dielectric withstanding voltage: 2000 VAC for one minute



ORDERING CODE:

42R38-1    2     
          1    2

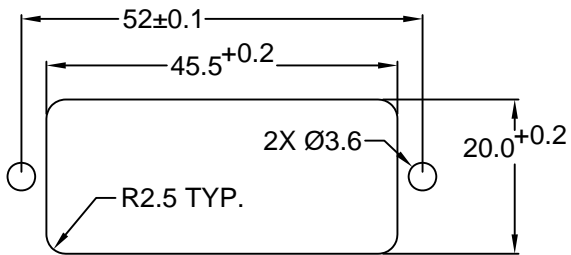
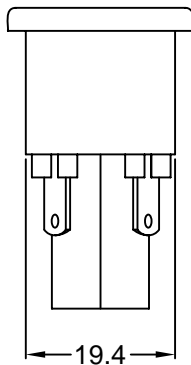
- 1) COLOR  
1 = BLACK  
2 = GRAY

2) ELECTRICAL CIRCUIT CONFIGURATION

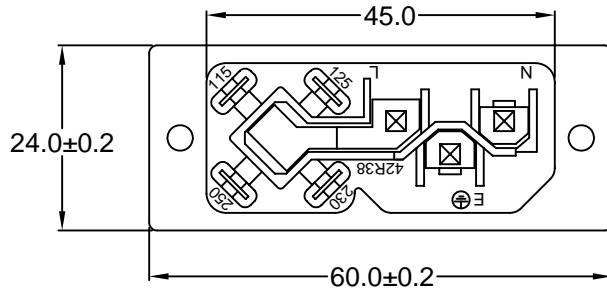
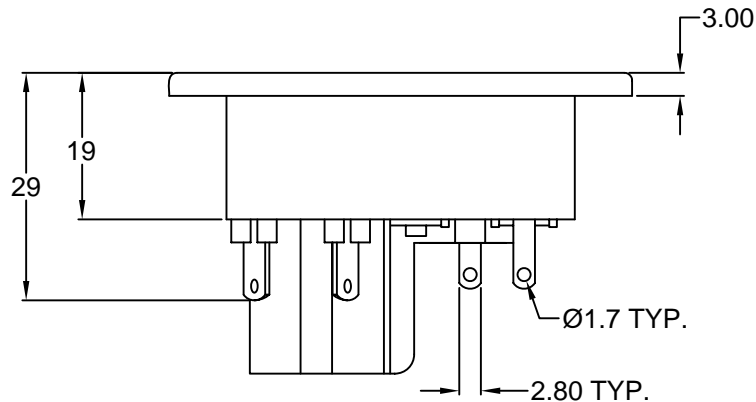
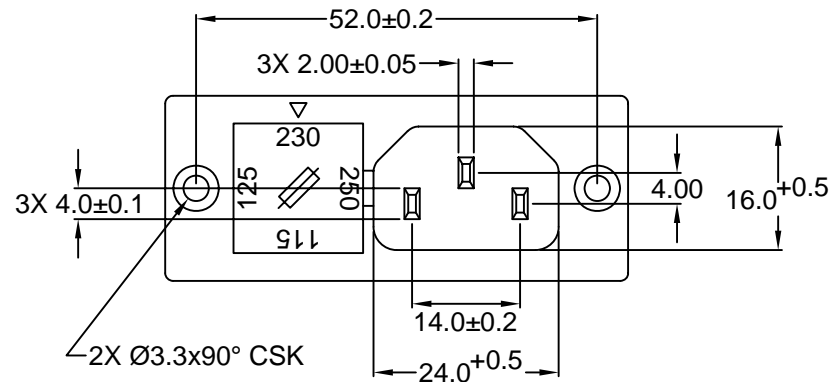
1 = 10A 250V 70°C  
2+GROUND

2 = 10A 250V 120°C  
2+GROUND

4 = 10A 250V 70°C  
2 POLE



RECOMMENDED PANEL CUTOUT



RoHS COMPLIANT

TOLERANCE UNLESS OTHERWISE SPECIFIED		
X	±	1
X.X	±	0.4
X.XX	±	0.20
DRAWN BY	GQ	DATE: 09/17/01
CHECK BY	TD	DATE: 09/18/01
APPR BY	PB	DATE: 09/18/01

**Power Dynamics, Inc.**  
Phone: 973 560-0019 Whippany, New Jersey Fax: 973 560-0076

PART: IEC 60320 APPL. INLET AND COMBINATION FUSE HOLDER; SOLDER TERMINALS; SCREW

PART #: **42R38-1X2X** SHEET 1 of 1

SIZE: A ALL DIMENSIONS FOR REFERENCE ONLY DIMENSIONS ARE IN MILLIMETERS SCALE: NTS REV:

D

C

B

A

REVISIONS	CHNG	CHECK	APPR
	CHANGE		
REV	DATE		

6

5

4

3

2

1