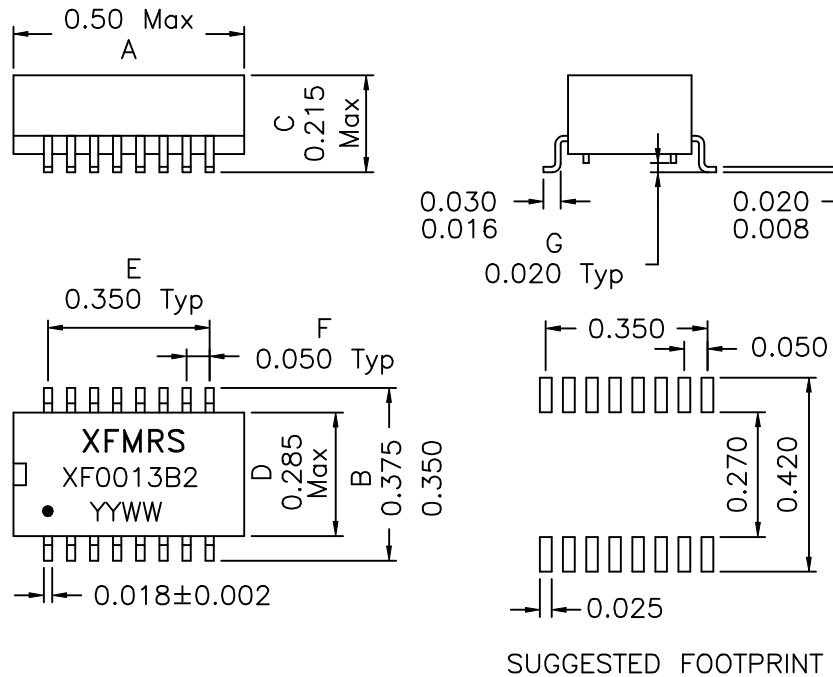
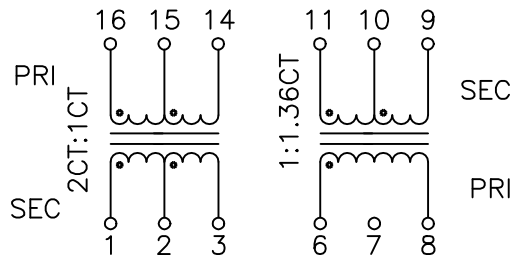


1. Dimensions:



2. Schematic:



3. Electrical Specifications:@25°C

Isolation Voltage: 1500 VAC

Turns Ratio: (16-15-14):(1-2-3)=1CT:2CT ±3%

Turns Ratio: (6-8):(11-10-9)=1:1.36CT ±3%

PIN16-14 OCL: 1.5mH Minimum @100KHz 50mV

PIN6-8 OCL: 1.5mH Minimum @100KHz 50mV

Cw/w: 40pF Maximum @100KHz 50mV (Pri/Sec)

Leakage Inductance: 0.4uH Maximum @100KHz 50mV
@PRI, WITH SEC SHORTED

PRI DC Resistance: 0.70 Ohms Maximum

PIN1-3 DC Resistance: 1.20 Ohms Maximum

PIN11-9 DC Resistance: 1.00 Ohms Maximum

Note:

1. Solderability: Leads shall meet MIL-STD-202, Method 208D for solderability.
2. Flammability: UL94V-0,
3. ASTM oxygen index: > 28% ,
4. Temperature rating: 155°C. UL file E151556,
5. Operating Temperature Range: -40°C to +85°C

DOC. REV. A/1

XFMRS Inc UNLESS OTHERWISE SPECIFIED TOLERANCES: .xxx ±0.010 Dimensions in Inch SHEET 1 OF 2	Title: T1/CEPT/DS3 Surface Mount Transformers		
	P/N: XF0013B2		REV. A
	DWN.	廖玉坤	Jan-19-01
	CHK.	李清儿	Jan-19-01
APP.	BW	Jan-19-01	