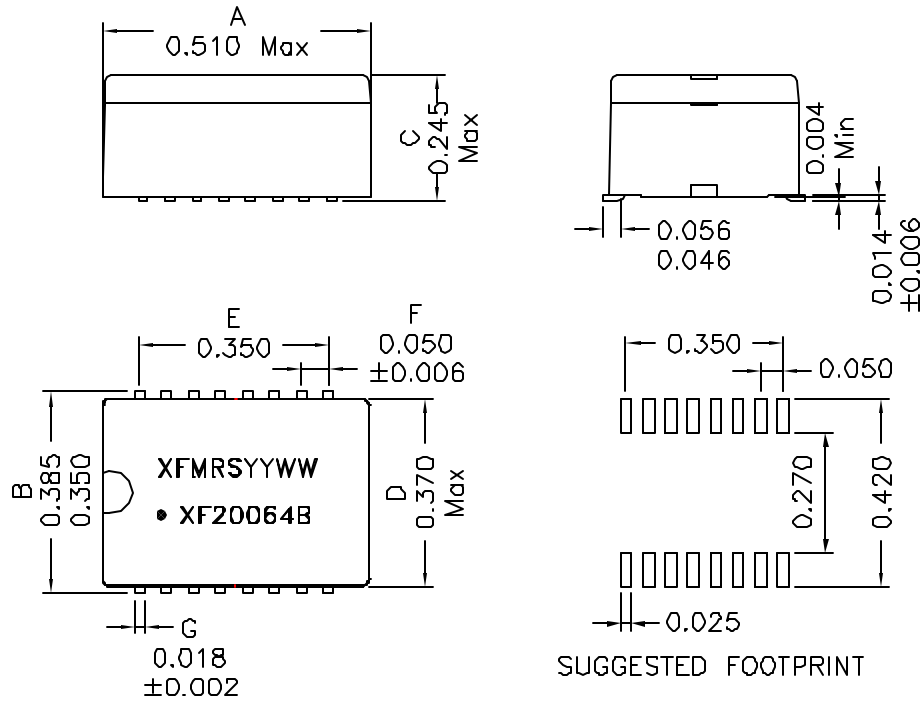


## 1. Mechanical Dimensions:



## 3. Electrical Specifications: @25°C

Isolation Voltage: 1500Vac

Turns Ratio: Pins (1-2-3):(16-15-14)=1CT:1CT±2%

Turns Ratio: Pins (6-7-8):(11-10-9)=1CT:1.414CT±2%

PRI OCL: 200uH±20% @100KHz 50mV

Cw/w: 15pF Max @100KHz 50mV (Pri/Sec)

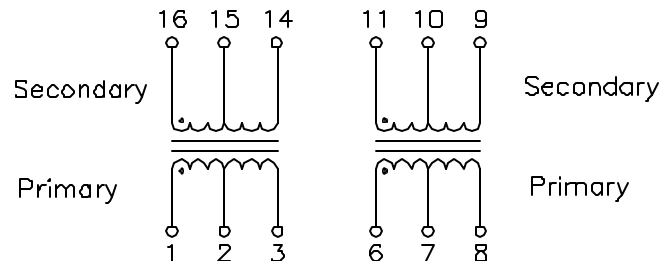
PRI LL: 0.3uH Max @100KHz 50mV, Short SEC

PRI DC Resistance: 0.40 Ohms Max

SEC DC Resistance: 0.40 Ohms Max

PRI Q: 5 Min @10KHz 50mV

## 2. Schematic:



### Notes:

1. Solderability: Leads shall meet MIL-STD-202G, Method 208H for solderability.
2. Flammability: UL94V-0
3. ASTM oxygen Index: > 28%
4. Insulation System: Class F 155°C, UL file E151556
5. Operating Temperature Range: All listed parameters are to be within tolerance from -40°C to +85°C
6. Storage Temperature Range: -55°C to +125°C
7. Aqueous wash compatible
8. SMD Lead Coplanarity: ±0.004"(0.102mm)
9. Electrical and mechanical specifications 100% tested
10. RoHS Compliant Component

|                                   |  |   |           |
|-----------------------------------|--|---|-----------|
| <b>XFMRS Inc</b><br>www.XFMRS.com |  | Title:<br>10 BASE T ISOLATION MAGNETICS |           |
| UNLESS OTHERWISE SPECIFIED        |  | P/N: XF20064B                           | REV. C    |
| TOLERANCES:<br>.xxx ±0.010        |  | DWN.                                    | Mei Chen  |
| Dimensions in Inch                |  | CHK.                                    | YK Liao   |
| SHEET 1 OF 1                      |  | APP.                                    | Joe Huff  |
|                                   |  |   | Sep-08-11 |
|                                   |  |   | Sep-08-11 |
|                                   |  |   | Sep-08-11 |

DOC REV: C/1