

IEC Appliance Inlet C20, Snap-in Mounting, Front Side, Solder or Quick-connect Terminal



C20



70° C

**Description**

- Panel Mount:  
Snap-in, from front side
- Appliance Inlet, Pin temperature 70 °C, Protection class I
- Solder terminals or quick connect terminals
- Alternative: protection class II version 4794

**Approvals**

- VDE License Number: 40008517
- UL License Number: E96454

**Other versions on request**

- Types for enhanced glow wire test requirements acc. IEC 60695-2-11 to -13 for the use in unattended household equipment acc. IEC 60335-1

**References**

[General Product Information](#)

**Weblinks**

[Approvals, RoHS, CHINA-RoHS, Mating Connectors, e-Store, Distributor-Stock-Check, Accessories](#)

**Technical Data**

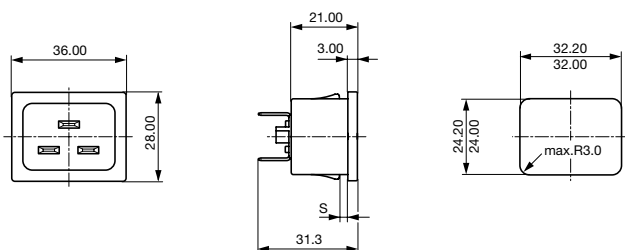
Ratings IEC	16A / 250VAC; 50Hz
Ratings UL/CSA	20A / 250VAC; 60Hz
Dielectric Strength	> 2kVAC between L-N > 2kVAC between L/N-PE (1 min/50Hz)
Allowable Operation Temp.	-25 °C to 70 °C
Degree of Protection	from front side IP 30 acc. to IEC 60529
Protection Class	Suitable for appliances with protection class 1 acc. to IEC 61140
Terminal	Solder terminals or quick connect terminals
Panel Thickness s	Snap-in: 1/1.2/1.5/2/2.5/3 mm
Material: Housing	Thermoplastic, black, UL 94V-0

Appliance Inlet	C20 acc. to IEC/EN 60320-1, UL 498, CSA C22.2 no. 42 (for cold conditions) pin-temperature 70 °C, 16A, Protection Class 1
-----------------	--

**Dimensions**

4793

36 mm



## Variants

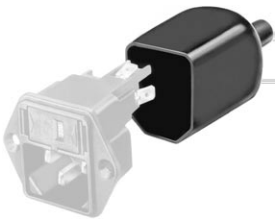
Panel mounting	Panel Thickness s [mm]	Terminal	Order Number
Snap-in	1	Quick connect terminals 6.3 x 0.8 mm	4793.3000
Snap-in	1.2	Quick connect terminals 6.3 x 0.8 mm	4793.8000
Snap-in	1.5	Quick connect terminals 6.3 x 0.8 mm	4793.4000
Snap-in	2	Quick connect terminals 6.3 x 0.8 mm	4793.5000
Snap-in	2.5	Quick connect terminals 6.3 x 0.8 mm	4793.6000
Snap-in	3	Quick connect terminals 6.3 x 0.8 mm	4793.7000
Snap-in	1	Solder terminals 3.8 x 0.8 mm	4793.3200
Snap-in	1.2	Solder terminals 3.8 x 0.8 mm	4793.8200
Snap-in	1.5	Solder terminals 3.8 x 0.8 mm	4793.4200
Snap-in	2	Solder terminals 3.8 x 0.8 mm	4793.5200
Snap-in	2.5	Solder terminals 3.8 x 0.8 mm	4793.6200
Snap-in	3	Solder terminals 3.8 x 0.8 mm	4793.7200

Articles for enhanced glow wire test requirements acc. IEC 60695-2-11 to -13 can be ordered with ending ".15" (xxxx.xxxx.15). They are suitable for the use in unattended household equipment acc. IEC 60335-1.

**Packaging unit** 100 Pcs

## Accessories

## Description



Assorted Covers  
Rear Cover

0859.0047



Cord retaining kits  
Cord retaining strain relief

Flat head, L

4700.0011

## Mating Outlets/Connectors

## Category / Description

## Connector Overview complete



IEC Connector C19, Rewireable, Straight

0104

IEC Connector C19, Rewireable, Angled

1651

IEC Connector C19, Rewireable, Straight

1652

IEC Connector C19, Rewireable, Angled

4790

IEC Connector C19, Rewireable, Straight

4795

[Connector further types to 4793](#)

## Power Cord Overview complete



Power Cord with IEC Connector C19, Straight

1654

[Power Cord further types to 4793](#)

**Category / Description**

[Power Supply or Interconnection Cord Overview complete](#)

[Divers Power Supply and Interconnection Cords 16 A](#)

[Kabelverbindung/16 A](#)

[Power Supply or Interconnection Cord further types to 4793](#)

---