

NOTES: UNLESS OTHERWISE SPECIFIED

1. MATERIAL SPECIFICATIONS:

BODY, NUT, BKHD BUSHING: BRASS PER ASTM B16
 CONTACT: BERYLLIUM COPPER PER ASTM B196
 INSULATOR: TEFLON PER ASTM D1710
 CE INSULATOR: ULTEM1000
 LOCKWASHER: PHOSPHOR BRONZE PER ASTM B103

2. FINISH SPECIFICATIONS:

CENTER CONTACT: .000050 MIN GOLD PER ASTM B488 OVER .000080 MIN NICKEL PER AMS-QQ-N-290(ROHS).
 BODY: .000015 MIN GOLD PER ASTM B488 OVER .000080 MIN NICKEL PER AMS-QQ-N-290(ROHS).
 NUT, BKHD BUSH, LOCKWASHER: .000100 MIN NICKEL PER AMS-QQ-N-290 OVER COPPER FLASH PER ASTM B734(ROSH).

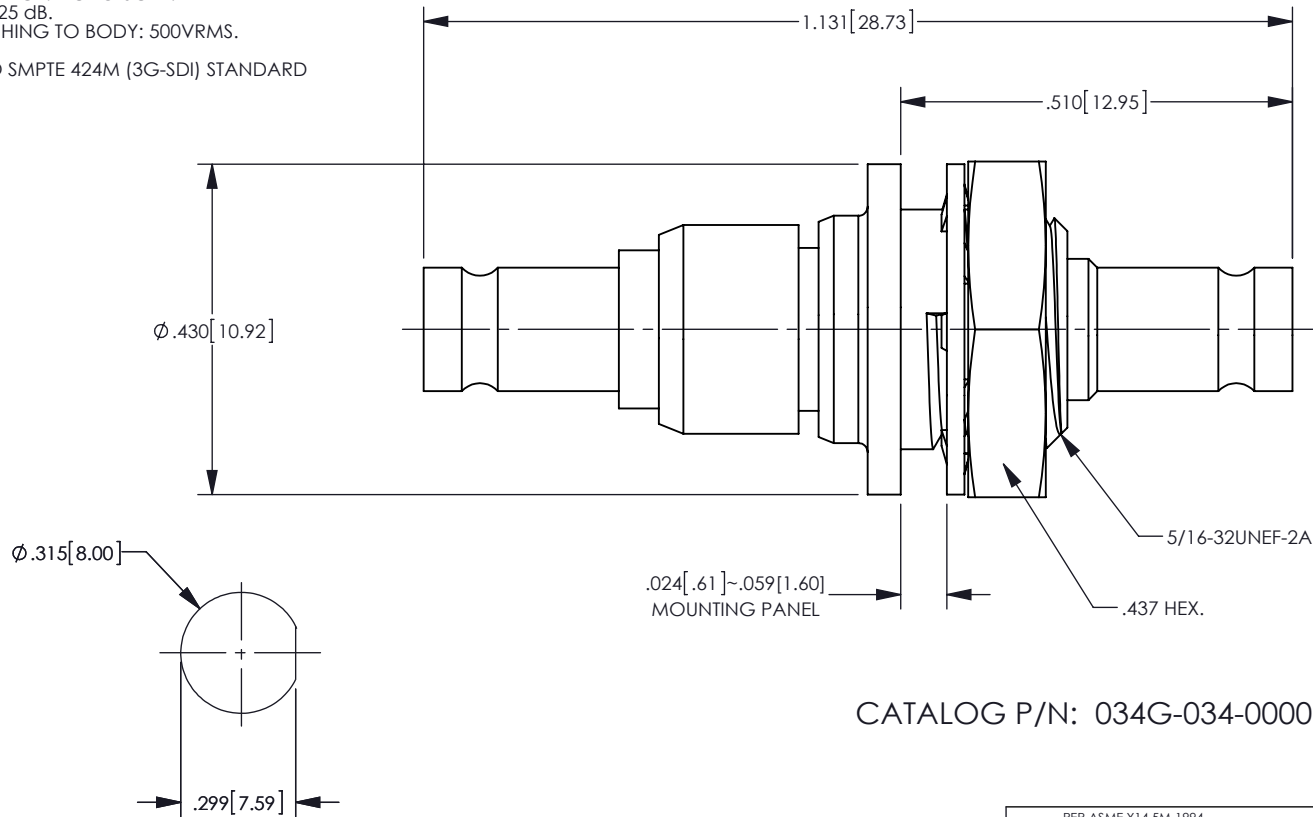
3. LOCKWASHER, NUT SHIPPED LOOSE.

4. ELECTRICAL SPECIFICATIONS:

IMPEDANCE: 75 OHM.
 FREQUENCY RANGE: DC TO 6GHz.
 RETURN LOSS: -25 dB.
 DWV BKHD BUSHING TO BODY: 500VRMS.

5. COMPLIANT TO SMPTE 424M (3G-SDI) STANDARD

REV	DESCRIPTION	BY DATE	APPD
B	UPDATED PER ECR-ER39992	02/03/12 CY	LL



CATALOG P/N: 034G-034-00002H

RECOMMENDED MOUNTING HOLE

PER ASME Y14.5M-1994 UNLESS OTHERWISE SPECIFIED: DIMENSIONS ARE IN INCHES [MM] TOLERANCES: DECIMAL: .XX [X.X] ± .01 [0.3] .XXX [X.XX] ± .005 [0.13] .XXXX [X.XXX] ± .XXXX ANGLES: ± 2° SCALE: 4:1				KINGS[®] by WINCHESTER ELECTRONICS Winchester Electronics Corporation 62 Barnes Industrial Road North Wallingford, Connecticut 06492	
CUSTOMER SALES DRAWING				THIRD ANGLE 	
DRAWN	DATE	APPROVED	DATE	BKHD, ISO GND, 75 OHM 1.0/2.3 ADAPTER, F-F (RoHS COMPLIANT)	
CY	08/10/11	D Cam	08/11/11		
APPROVED	DATE	APPROVED	DATE	A	SD034G-034-00002H
XXX	XX/XX/XX	XXX	XX/XX/XX		
				SHT	OF
				1	1
				REV	B