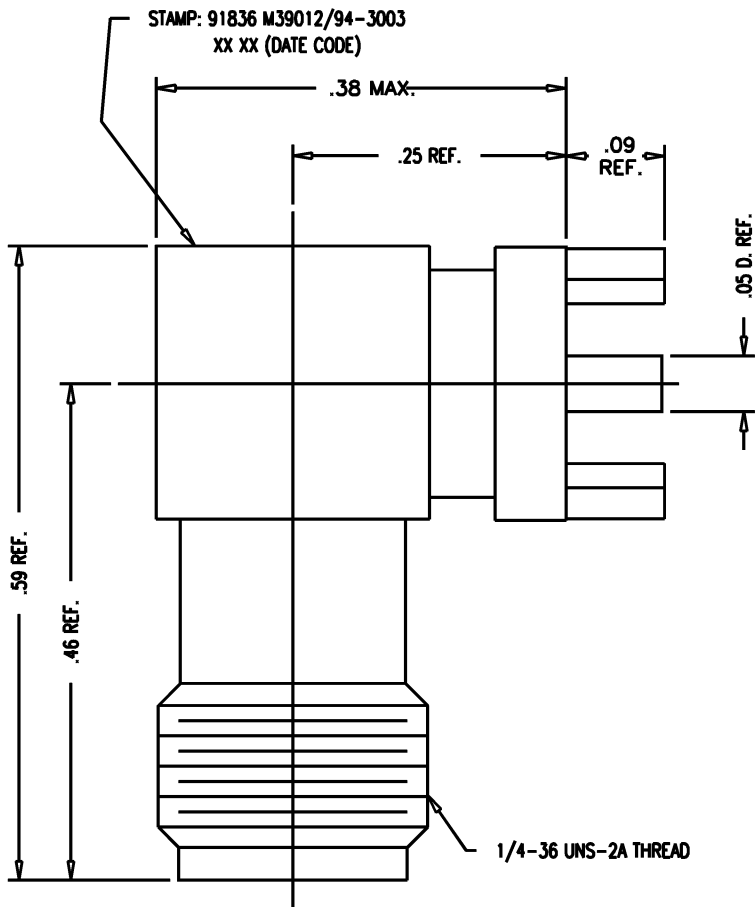


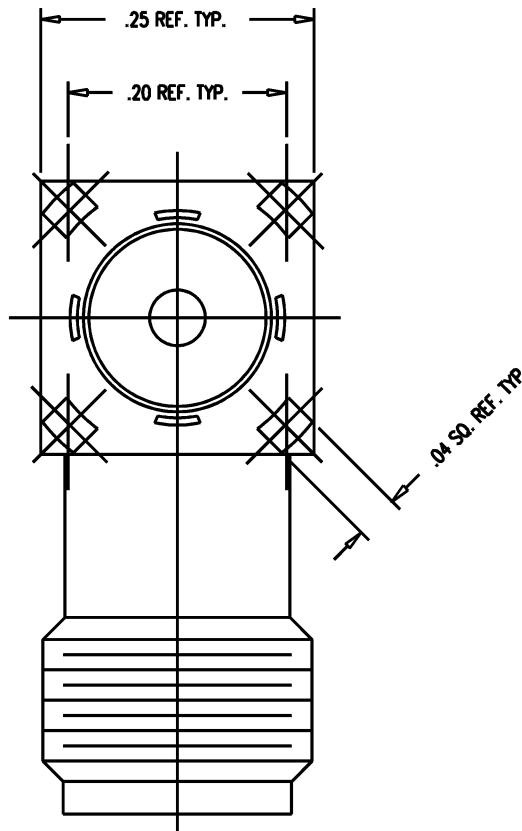
DASH NO.	M CODE	MADE FROM
----------	--------	-----------



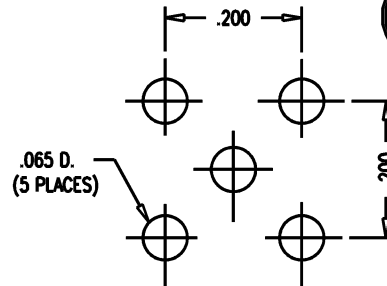
NOTES:

1. INTERFACE PER MIL-STD-348 FIG. 310-2.
2. MATERIALS:  
INSULATORS: TEFLON, ASTM-D4894  
CENTER CONTACT: BER. COP., ASTM-B196  
ALL OTHER PARTS: STAINLESS STEEL, SAE-AMS-00-S-763
3. FINISHES:  
ALL METAL PARTS: HARD GOLD PLATE PER ASTM-B488
4. ELECTRICAL CHARACTERISTICS:  
NOMINAL IMPEDANCE: 50 OHMS  
VOLTAGE RATING: 1000 VRMS

GSD



GSD



MOUNTING HOLES

M39012/94-3003

REVISIONS

ISSUE	CHANGES
0	ER 32926 JCA 03/04/91
1	CN 34192 KH 10/19/92
2	CN 39474 A DCT 6/13/6
3	CN 39552 C JPK 08/07/06
4	CN 39815 C PMC 02/28/07
5	CN 39917 E PMC 05/08/07
6	CN 40035 C PMC 08/16/07

SCALE 8:1

APPROX SURFACE AREA

877-95-1

USED ON

REF:

RCPT, P.C.B., ANG, SMA

DRAWN JCA DATE 03/04/91

DESIGN GA DATE 03/05/91

APPR. DATE

A Winchester Electronics Company

ROCK HILL, SOUTH CAROLINA 29730

M39012/94-3003