

Monolithic crystal filter

MQF130...180-1500/B



Application

- 6 pol filter
- antenna filter
- use in mobile and stationary transceivers

Limiting values

		Unit	Value
Nominal frequency	f_0	MHz	130.0...180.0
Insertion loss		dB	< 8.0
Pass band at 3.0dB		kHz	$\pm > 7.5$
Ripple in pass band	$f_0 \pm 5$ kHz	dB	< 1.0
Stop band attenuation	$f_0 \pm 25$ kHz	dB	> 20
	$f_0 \pm 60$ kHz	dB	> 60
Alternate attenuation		dB	> 60 except spurious
Spurious responses	$> f_0 + 60$ kHz	dB	> 40

Note: The nominal frequency f_0 is determined by customer

Terminating impedance Z

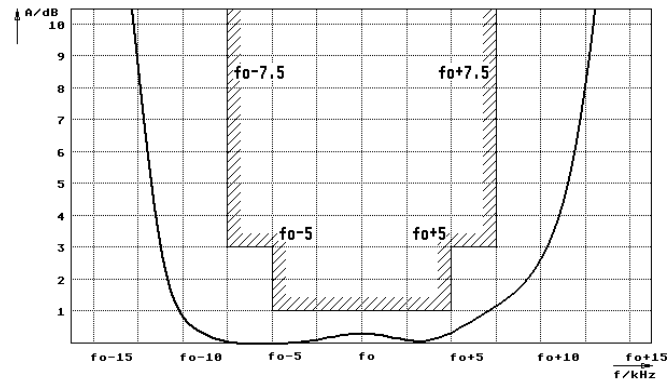
R1 C1	Ohm/pF	50 0
R2 C2	Ohm/pF	50 0

Operating temp. range

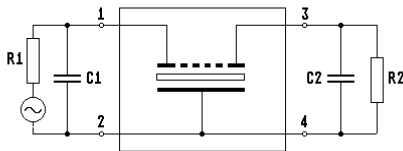
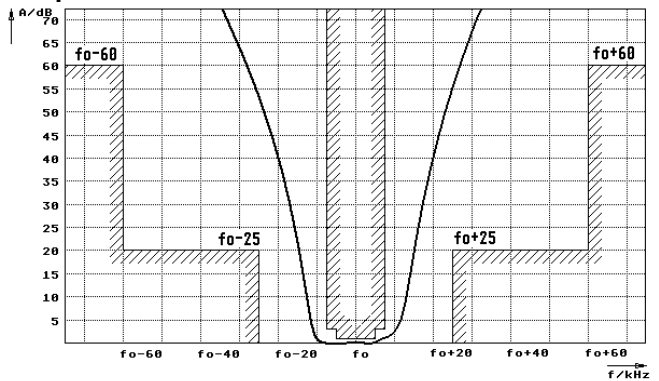
°C -20... +70

Characteristics MQF130...150-1500/B

Pass band



Stop band



- Pin connections:
- | | |
|---|---------------|
| 1 | Input |
| 2 | Ground-Input |
| 3 | Output |
| 4 | Ground-Output |

