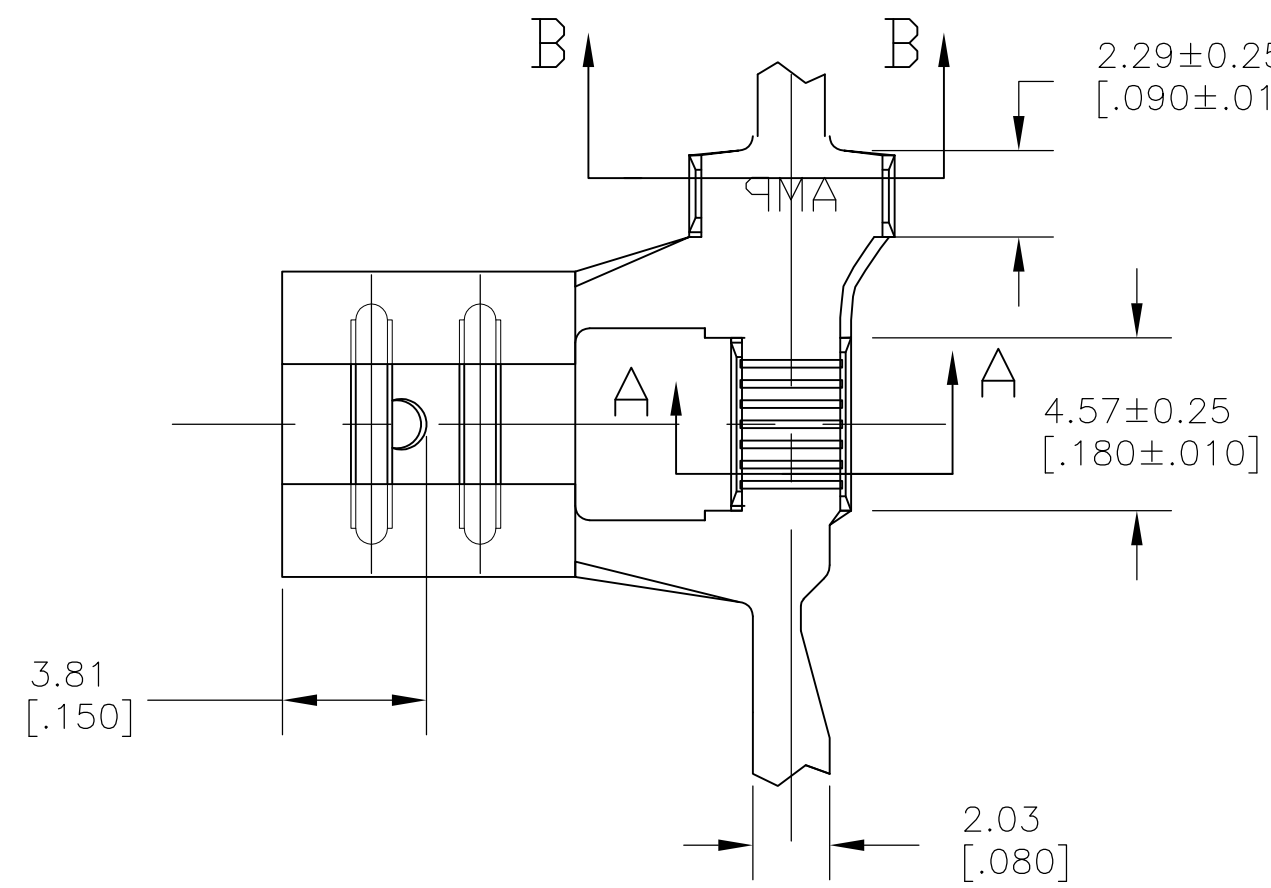
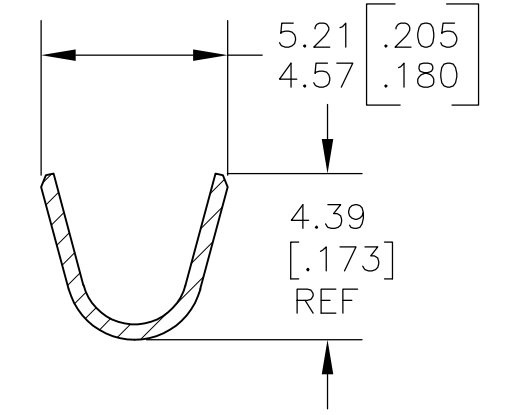
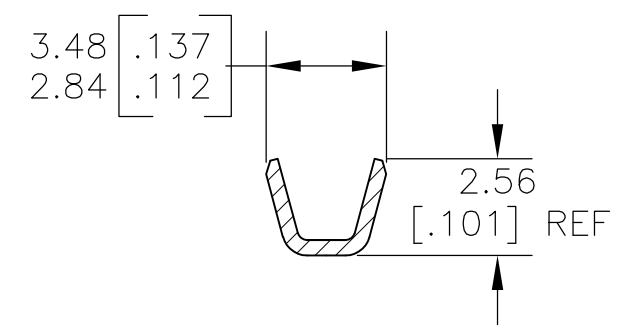
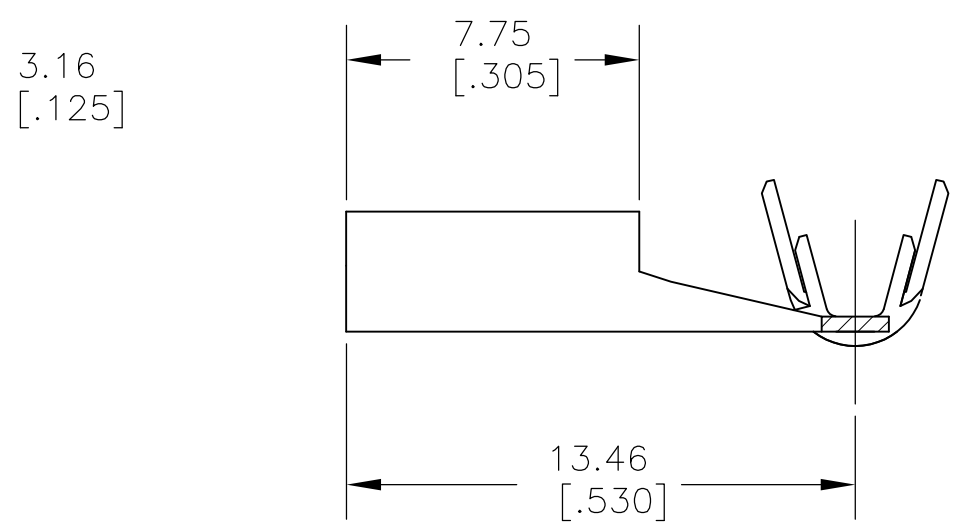
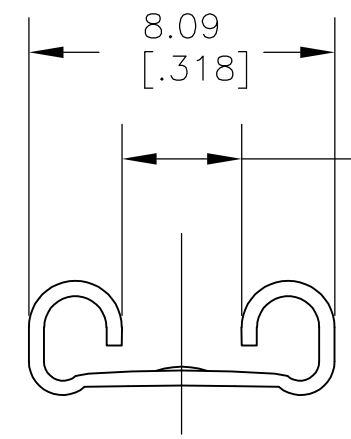


THIS DRAWING IS UNPUBLISHED. RELEASED FOR PUBLICATION
 © COPYRIGHT - By - ALL RIGHTS RESERVED.

LOC	DIST	REVISIONS					
AF	50	P	LTR	DESCRIPTION	DATE	DWN	APVD
			A2	RELEASED PER ECO 11-022700	10NOV11	JR	PD



- 1 CONTINUOUS STRIP ON REELS
- 2 WIRE SIZE IS 1000-2700 CMA (2 WIRES)
(0.6+0.6mm) to (1.0+0.85mm) DIA
CRIMP WIDTH IS 2.29 [.090], F TYPE
- 3 INSULATION RANGE 2.54-3.05 [.100-.120] DIA
CRIMP WIDTH IS 3.56 [.140], OVERLAP TYPE
- 4 0.002032 [.00080] MIN TIN PLATE
- 5 MATING TAB THK IS 0.81±0.025 [.032±.001].



SECTION A-A SECTION B-B

1742882-1
PART NO

THIS DRAWING IS A CONTROLLED DOCUMENT.		DWN	jr_ruth	08DEC10	STE TE Connectivity			
DIMENSIONS: MM [INCHES]		CHK	PETE_DESANTIS	08DEC10				
TOLERANCES UNLESS OTHERWISE SPECIFIED:		APVD	PETE_DESANTIS	08DEC10	NAME			
0 PLC ± -		PRODUCT SPEC	-		RECEPTACLE, FASTON, FLAG, AMPLIVAR, 6.35 [.250] SERIES			
1 PLC ± -		APPLICATION SPEC	-		SIZE	CAGE CODE	DRAWING NO	RESTRICTED TO
2 PLC ± 0.25 [.010]		WEIGHT	-		A3	00779	C-1742882	-
3 PLC ± -		CUSTOMER DRAWING		SCALE	5:1	SHEET	1 OF 1	REV
4 PLC ± -								A2
ANGLES ± 5°								
FINISH								
MATERIAL								
4M BRASS								