

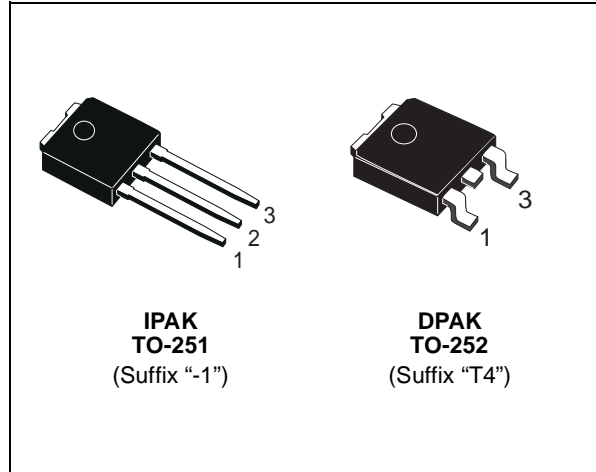


# STD90NH02L

## N-CHANNEL 24V - 0.0052 Ω - 60A DPAK/IPAK STripFET™ III POWER MOSFET

| TYPE       | V <sub>DSS</sub> | R <sub>DS(on)</sub> | I <sub>D</sub> |
|------------|------------------|---------------------|----------------|
| STD90NH02L | 24 V             | < 0.006 Ω           | 60 A(2)        |

- TYPICAL R<sub>DS(on)</sub> = 0.0052 Ω @ 10 V
- TYPICAL R<sub>DS(on)</sub> = 0.007 Ω @ 5 V
- R<sub>DS(ON)</sub> \* Q<sub>g</sub> INDUSTRY'S BENCHMARK
- CONDUCTION LOSSES REDUCED
- SWITCHING LOSSES REDUCED
- LOW THRESHOLD DEVICE
- THROUGH-HOLE IPAK (TO-251) POWER PACKAGE IN TUBE (SUFFIX "-1")
- SURFACE-MOUNTING DPAK (TO-252) POWER PACKAGE IN TAPE & REEL (SUFFIX "T4")



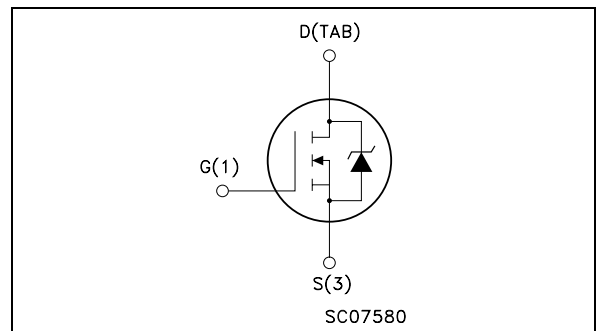
### DESCRIPTION

The **STD90NH02L** utilizes the latest advanced design rules of ST's proprietary STripFET™ technology. This is suitable for the most demanding DC-DC converter application where high efficiency is to be achieved.

### APPLICATIONS

- SPECIFICALLY DESIGNED AND OPTIMISED FOR HIGH EFFICIENCY DC/DC CONVERTERS

### INTERNAL SCHEMATIC DIAGRAM



### Ordering Information

| SALES TYPE   | MARKING  | PACKAGE | PACKAGING   |
|--------------|----------|---------|-------------|
| STD90NH02LT4 | D90NH02L | TO-252  | TAPE & REEL |
| STD90NH02L-1 | D90NH02L | TO-251  | TUBE        |

### ABSOLUTE MAXIMUM RATINGS

| Symbol                | Parameter  | Value      | Unit |
|-----------------------|--|------------|------|
| V <sub>spike(1)</sub> | Drain-source Voltage Rating                          | 30         | V    |
| V <sub>DS</sub>       | Drain-source Voltage (V <sub>GS</sub> = 0)           | 24         | V    |
| V <sub>DGR</sub>      | Drain-gate Voltage (R <sub>GS</sub> = 20 kΩ)         | 24         | V    |
| V <sub>GS</sub>       | Gate- source Voltage                                 | ± 20       | V    |
| I <sub>D(2)</sub>     | Drain Current (continuous) at T <sub>C</sub> = 25°C  | 60         | A    |
| I <sub>D(2)</sub>     | Drain Current (continuous) at T <sub>C</sub> = 100°C | 60         | A    |
| I <sub>DM(3)</sub>    | Drain Current (pulsed)                               | 240        | A    |
| P <sub>tot</sub>      | Total Dissipation at T <sub>C</sub> = 25°C           | 95         | W    |
|                       | Derating Factor                                      | 0.63       | W/°C |
| E <sub>AS</sub> (4)   | Single Pulse Avalanche Energy                        | 600        | mJ   |
| T <sub>stg</sub>      | Storage Temperature                                  | -55 to 175 | °C   |
| T <sub>j</sub>        | Max. Operating Junction Temperature                  |            |      |

## STD90NH02L

### THERMAL DATA

|                |  |     |      |      |
|----------------|--|-----|------|------|
| Rthj-case      | Thermal Resistance Junction-case               | Max | 1.58 | °C/W |
| Rthj-amb       | Thermal Resistance Junction-ambient            | Max | 100  | °C/W |
| T <sub>I</sub> | Maximum Lead Temperature For Soldering Purpose |     | 275  | °C   |

### ELECTRICAL CHARACTERISTICS (T<sub>CASE</sub> = 25 °C UNLESS OTHERWISE SPECIFIED) OFF

| Symbol               | Parameter   | Test Conditions   | Min. | Typ. | Max.    | Unit     |
|----------------------|---|---|------|------|---------|----------|
| V <sub>(BR)DSS</sub> | Drain-source Breakdown Voltage                        | I <sub>D</sub> = 25 mA, V <sub>GS</sub> = 0                             | 24   |      |         | V        |
| I <sub>DSS</sub>     | Zero Gate Voltage Drain Current (V <sub>GS</sub> = 0) | V <sub>DS</sub> = 20 V<br>V <sub>DS</sub> = 20 V T <sub>C</sub> = 125°C |      |      | 1<br>10 | μA<br>μA |
| I <sub>GSS</sub>     | Gate-body Leakage Current (V <sub>DS</sub> = 0)       | V <sub>GS</sub> = ± 20V   |      |      | ±100    | nA       |

### ON (5)

| Symbol              | Parameter                         | Test Conditions   | Min. | Typ.            | Max.           | Unit   |
|---------------------|-----------------------------------|---|------|-----------------|----------------|--------|
| V <sub>GS(th)</sub> | Gate Threshold Voltage            | V <sub>DS</sub> = V <sub>GS</sub> I <sub>D</sub> = 250 μA                                   | 1    | 1.8             | 2.5            | V      |
| R <sub>DS(on)</sub> | Static Drain-source On Resistance | V <sub>GS</sub> = 10 V I <sub>D</sub> = 30 A<br>V <sub>GS</sub> = 5 V I <sub>D</sub> = 15 A |      | 0.0052<br>0.007 | 0.006<br>0.011 | Ω<br>Ω |

### DYNAMIC

| Symbol  | Parameter   | Test Conditions   | Min. | Typ.               | Max. | Unit           |
|---|---|---|------|--------------------|------|----------------|
| g <sub>fs</sub> (5)                                       | Forward Transconductance  | V <sub>DS</sub> = 10 V I <sub>D</sub> = 30 A                          |      | 40                 |      | S              |
| C <sub>iss</sub><br>C <sub>oss</sub><br>C <sub>riss</sub> | Input Capacitance<br>Output Capacitance<br>Reverse Transfer Capacitance | V <sub>DS</sub> = 15V f = 1 MHz V <sub>GS</sub> = 0                   |      | 2850<br>800<br>120 |      | pF<br>pF<br>pF |
| R <sub>G</sub>  | Gate Input Resistance   | f = 1 MHz Gate DC Bias = 0<br>Test Signal Level = 20 mV<br>Open Drain |      | 1                  |      | Ω              |

# STD90NH02L

## ELECTRICAL CHARACTERISTICS (continued)

### SWITCHING ON

| Symbol                        | Parameter  | Test Conditions  | Min. | Typ.            | Max. | Unit           |
|-------------------------------|--|--|------|-----------------|------|----------------|
| $t_{d(on)}$<br>$t_r$          | Turn-on Delay Time<br>Rise Time                              | $V_{DD} = 10\text{ V}$ $I_D = 30\text{ A}$<br>$R_G = 4.7\ \Omega$ $V_{GS} = 10\text{ V}$<br>(Resistive Load, Figure 3) |      | 13<br>75        |      | ns<br>ns       |
| $Q_g$<br>$Q_{gs}$<br>$Q_{gd}$ | Total Gate Charge Source<br>Gate Charge<br>Gate-Drain Charge | $V_{DD} = 10\text{ V}$ $I_D = 60\text{ A}$ $V_{GS} = 10\text{ V}$  |      | 47.5<br>10<br>7 | 64   | nC<br>nC<br>nC |
| $Q_{oss}^{(6)}$               | Output Charge  | $V_{DS} = 16\text{ V}$ $V_{GS} = 0\text{ V}$   |      | 18.8            |      | nC             |
| $Q_{gls}^{(7)}$               | Third-quadrant Gate Charge                                   | $V_{DS} < 0\text{ V}$ $V_{GS} = 10\text{ V}$   |      | 44              |      | nC             |

### SWITCHING OFF

| Symbol                | Parameter                        | Test Conditions  | Min. | Typ.     | Max. | Unit     |
|-----------------------|----------------------------------|--|------|----------|------|----------|
| $t_{d(off)}$<br>$t_f$ | Turn-off Delay Time<br>Fall Time | $V_{DD} = 10\text{ V}$ $I_D = 30\text{ A}$<br>$R_G = 4.7\ \Omega$ , $V_{GS} = 10\text{ V}$<br>(Resistive Load, Figure 3) |      | 50<br>18 | 24.3 | ns<br>ns |

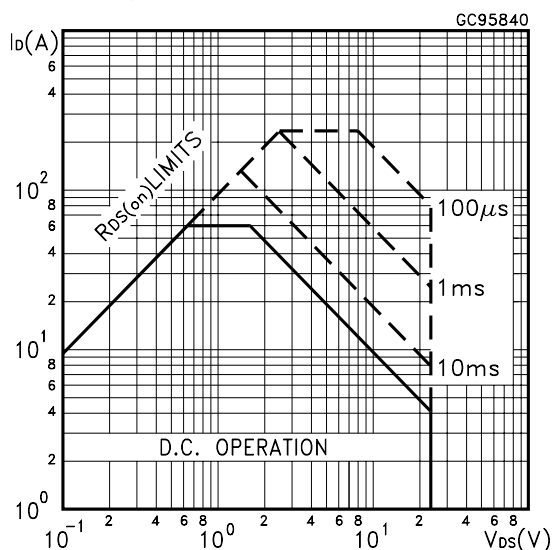
### SOURCE DRAIN DIODE

| Symbol                            | Parameter  | Test Conditions   | Min. | Typ.          | Max.      | Unit          |
|-----------------------------------|--|---|------|---------------|-----------|---------------|
| $I_{SD}$<br>$I_{SDM}$             | Source-drain Current<br>Source-drain Current (pulsed)                        |   |      |               | 60<br>240 | A<br>A        |
| $V_{SD}^{(5)}$                    | Forward On Voltage   | $I_{SD} = 30\text{ A}$ $V_{GS} = 0$   |      |               | 1.3       | V             |
| $t_{rr}$<br>$Q_{rr}$<br>$I_{RRM}$ | Reverse Recovery Time<br>Reverse Recovery Charge<br>Reverse Recovery Current | $I_{SD} = 60\text{ A}$ $di/dt = 100\text{ A}/\mu\text{s}$<br>$V_{DD} = 16\text{ V}$ $T_j = 150^\circ\text{C}$<br>(see test circuit, Figure 5) |      | 35<br>35<br>2 | 47<br>47  | ns<br>nC<br>A |

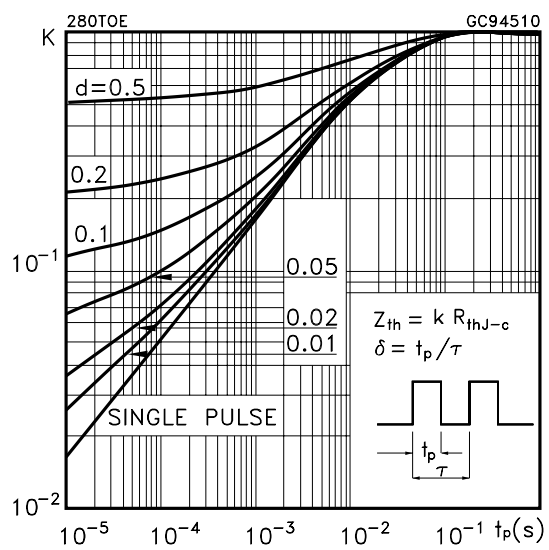
(1) Guaranteed when external  $R_g = 4.7\ \Omega$  and  $t_f < t_{fmax}$ .  
 (2) Value limited by wire bonding  
 (3) Pulse width limited by safe operating area.  
 (4) Starting  $T_j = 25\ ^\circ\text{C}$ ,  $I_D = 30\text{ A}$ ,  $V_{DD} = 15\text{ V}$ .

(5) Pulsed: Pulse duration = 300  $\mu\text{s}$ , duty cycle 1.5%.  
 (6)  $Q_{oss} = C_{oss} \cdot \Delta V_{in}$ ,  $C_{oss} = C_{gd} + C_{ds}$ . See Appendix A  
 (7) Gate charge for synchronous operation

### Safe Operating Area

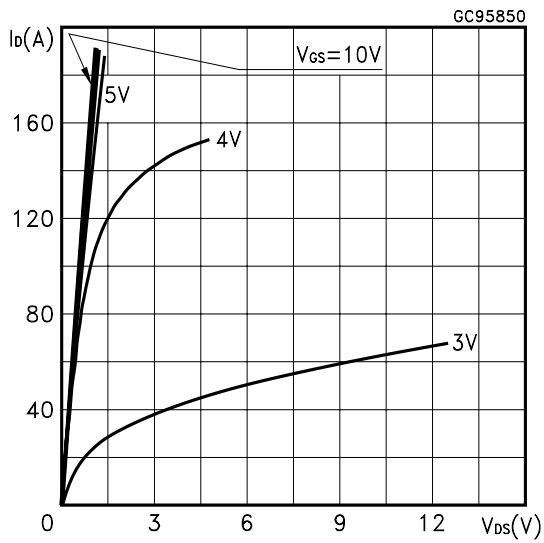


### Thermal Impedance

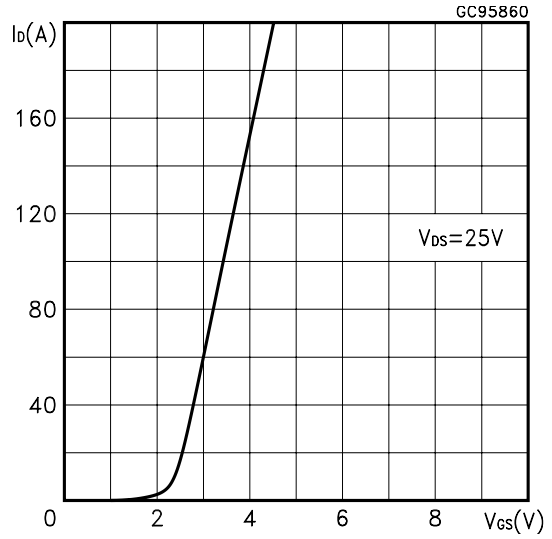


# STD90NH02L

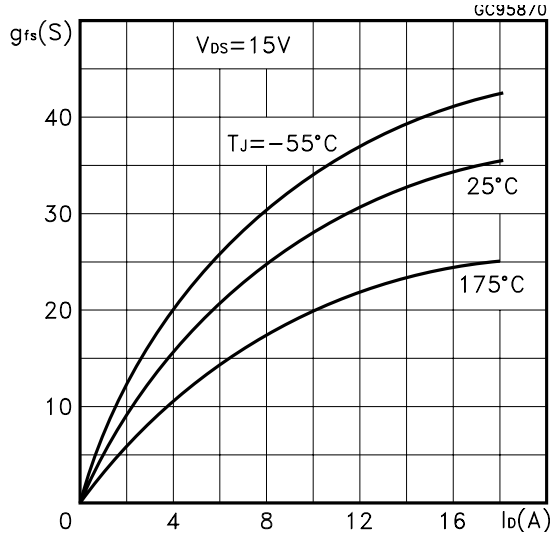
Output Characteristics



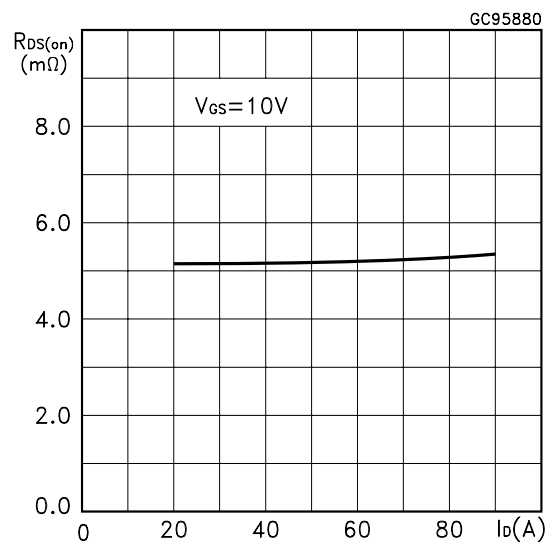
Transfer Characteristics



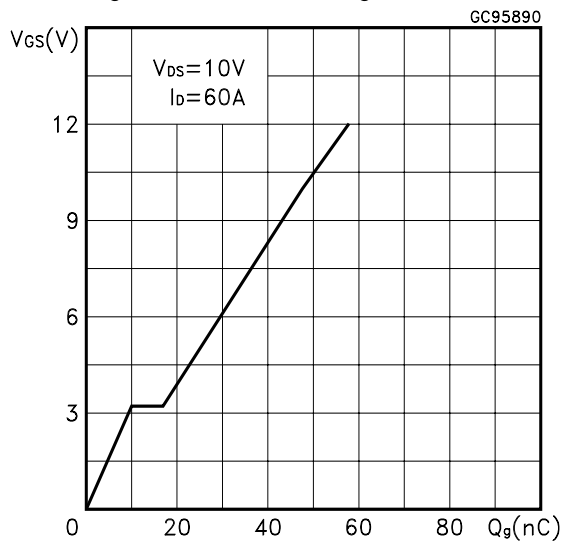
Transconductance



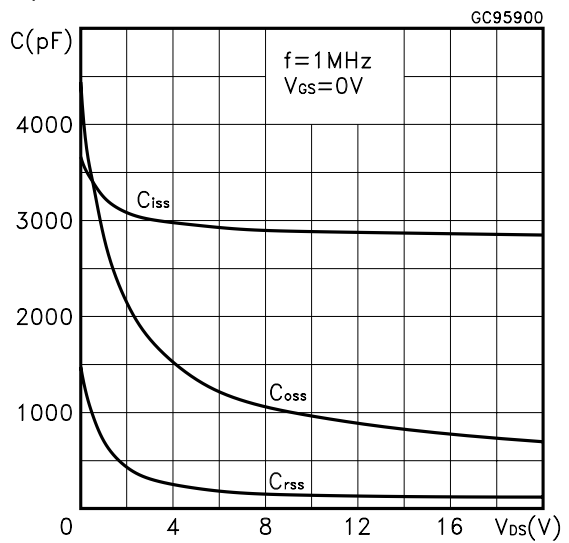
Static Drain-source On Resistance



Gate Charge vs Gate-source Voltage

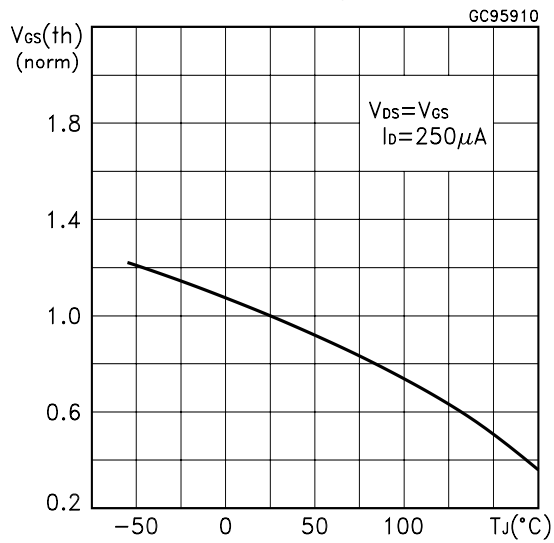


Capacitance Variations

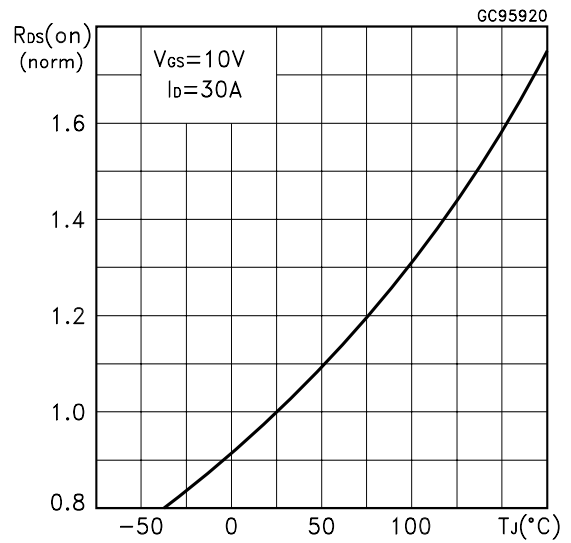


# STD90NH02L

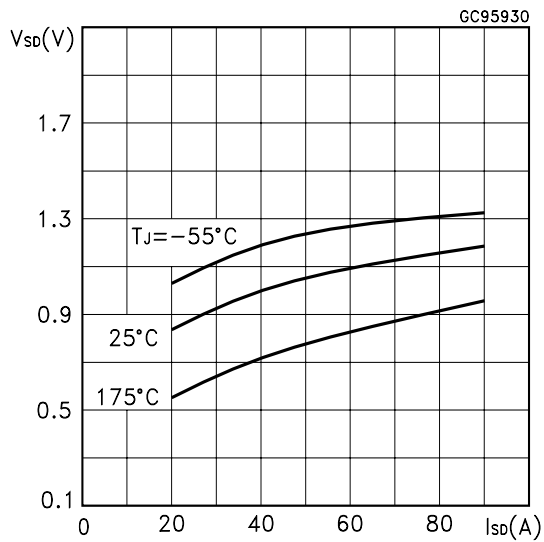
Normalized Gate Threshold Voltage vs Temperature



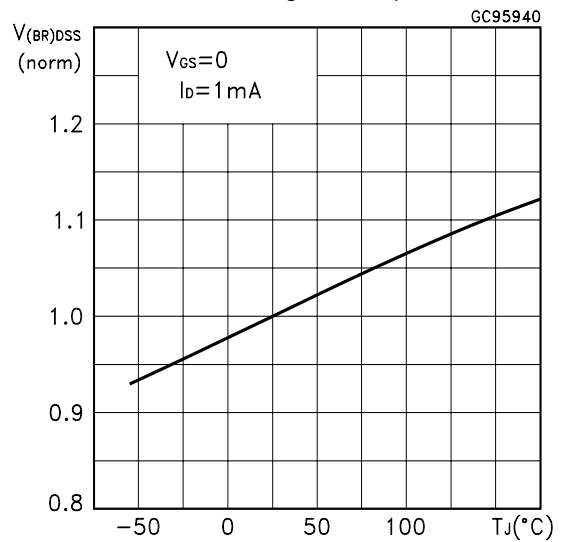
Normalized on Resistance vs Temperature



Source-drain Diode Forward Characteristics



Normalized Breakdown Voltage vs Temperature.



**Fig. 1: Unclamped Inductive Load Test Circuit**



**Fig. 2: Unclamped Inductive Waveform**



**Fig. 3: Switching Times Test Circuits For Resistive Load**



**Fig. 4: Gate Charge test Circuit**

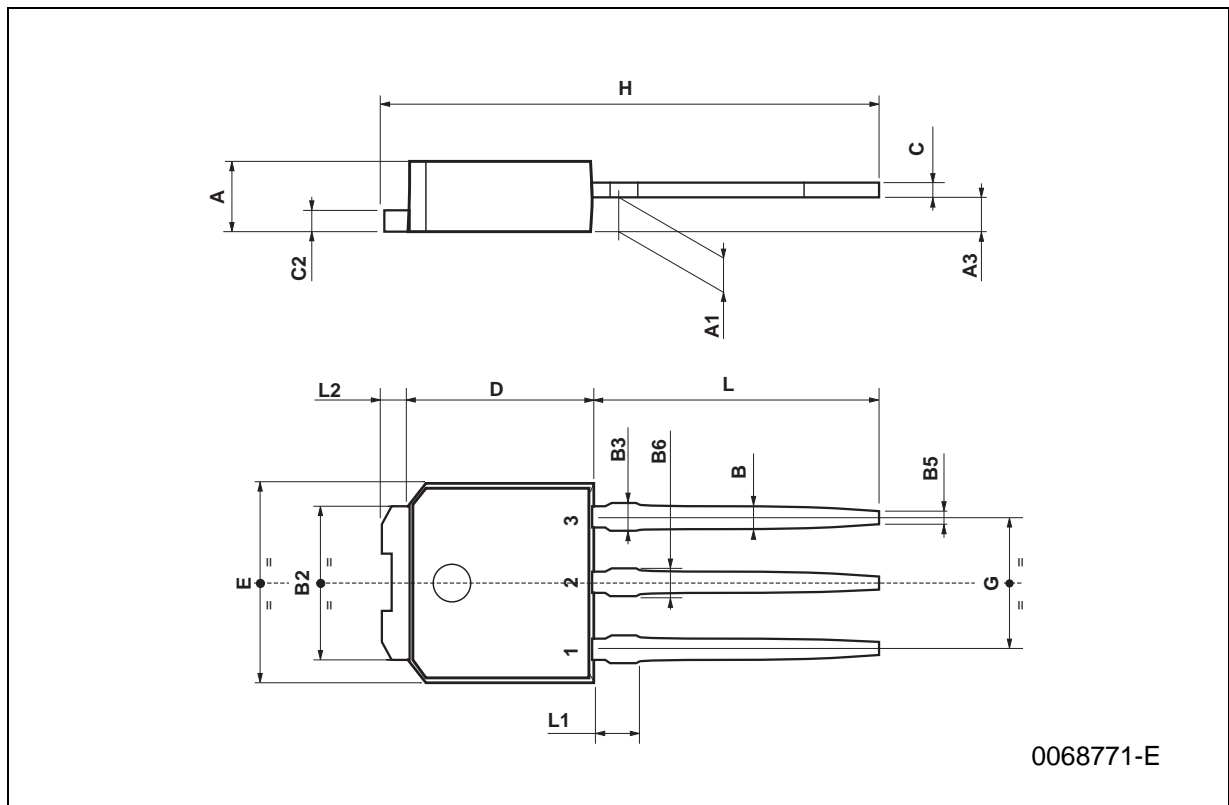


**Fig. 5: Test Circuit For Inductive Load Switching And Diode Recovery Times**



**TO-251 (IPAK) MECHANICAL DATA**

| DIM. | mm   |      |      | inch  |       |       |
|------|------|------|------|-------|-------|-------|
|      | MIN. | TYP. | MAX. | MIN.  | TYP.  | MAX.  |
| A    | 2.2  |      | 2.4  | 0.086 |       | 0.094 |
| A1   | 0.9  |      | 1.1  | 0.035 |       | 0.043 |
| A3   | 0.7  |      | 1.3  | 0.027 |       | 0.051 |
| B    | 0.64 |      | 0.9  | 0.025 |       | 0.031 |
| B2   | 5.2  |      | 5.4  | 0.204 |       | 0.212 |
| B3   |      |      | 0.85 |       |       | 0.033 |
| B5   |      | 0.3  |      |       | 0.012 |       |
| B6   |      |      | 0.95 |       |       | 0.037 |
| C    | 0.45 |      | 0.6  | 0.017 |       | 0.023 |
| C2   | 0.48 |      | 0.6  | 0.019 |       | 0.023 |
| D    | 6    |      | 6.2  | 0.236 |       | 0.244 |
| E    | 6.4  |      | 6.6  | 0.252 |       | 0.260 |
| G    | 4.4  |      | 4.6  | 0.173 |       | 0.181 |
| H    | 15.9 |      | 16.3 | 0.626 |       | 0.641 |
| L    | 9    |      | 9.4  | 0.354 |       | 0.370 |
| L1   | 0.8  |      | 1.2  | 0.031 |       | 0.047 |
| L2   |      | 0.8  | 1    |       | 0.031 | 0.039 |



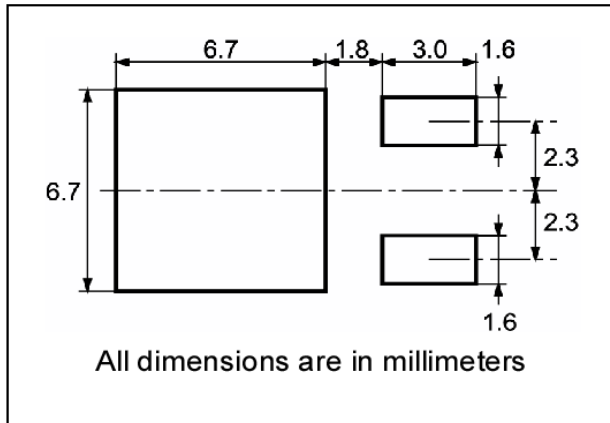
**TO-252 (DPAK) MECHANICAL DATA**

| DIM. | mm   |      |      | inch  |       |       |
|------|------|------|------|-------|-------|-------|
|      | MIN. | TYP. | MAX. | MIN.  | TYP.  | MAX.  |
| A    | 2.2  |      | 2.4  | 0.086 |       | 0.094 |
| A1   | 0.9  |      | 1.1  | 0.035 |       | 0.043 |
| A2   | 0.03 |      | 0.23 | 0.001 |       | 0.009 |
| B    | 0.64 |      | 0.9  | 0.025 |       | 0.035 |
| B2   | 5.2  |      | 5.4  | 0.204 |       | 0.212 |
| C    | 0.45 |      | 0.6  | 0.017 |       | 0.023 |
| C2   | 0.48 |      | 0.6  | 0.019 |       | 0.023 |
| D    | 6    |      | 6.2  | 0.236 |       | 0.244 |
| E    | 6.4  |      | 6.6  | 0.252 |       | 0.260 |
| G    | 4.4  |      | 4.6  | 0.173 |       | 0.181 |
| H    | 9.35 |      | 10.1 | 0.368 |       | 0.397 |
| L2   |      | 0.8  |      |       | 0.031 |       |
| L4   | 0.6  |      | 1    | 0.023 |       | 0.039 |

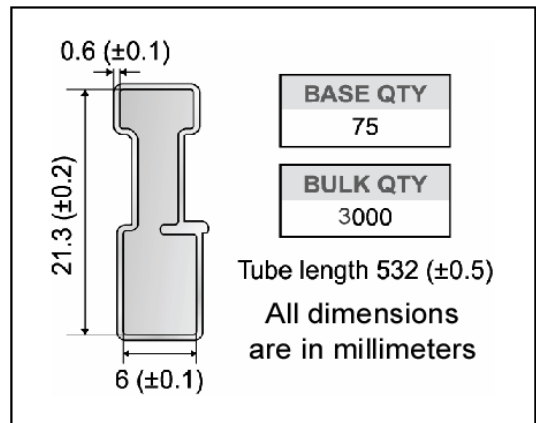




**DPAK FOOTPRINT**



**TUBE SHIPMENT (no suffix)\***



**TAPE AND REEL SHIPMENT (suffix "T4")\***

40 mm min. Access hole at slot location

Tape slot in core for tape start 2.5mm min. width

Full radius

G measured at hub

**REEL MECHANICAL DATA**

| DIM. | mm   |      | inch  |        |
|------|------|------|-------|--------|
|      | MIN. | MAX. | MIN.  | MAX.   |
| A    |      | 330  |       | 12.992 |
| B    | 1.5  |      | 0.059 |        |
| C    | 12.8 | 13.2 | 0.504 | 0.520  |
| D    | 20.2 |      | 0.795 |        |
| G    | 16.4 | 18.4 | 0.645 | 0.724  |
| N    | 50   |      | 1.968 |        |
| T    |      | 22.4 |       | 0.881  |

|                 |                 |
|-----------------|-----------------|
| <b>BASE QTY</b> | <b>BULK QTY</b> |
| 1000            | 1000            |

**TAPE MECHANICAL DATA**

| DIM. | mm   |      | inch  |       |
|------|------|------|-------|-------|
|      | MIN. | MAX. | MIN.  | MAX.  |
| A0   | 6.8  | 7    | 0.267 | 0.275 |
| B0   | 10.4 | 10.6 | 0.409 | 0.417 |
| B1   |      | 12.1 |       | 0.476 |
| D    | 1.5  | 1.6  | 0.059 | 0.063 |
| D1   | 1.5  |      | 0.059 |       |
| E    | 1.65 | 1.85 | 0.065 | 0.073 |
| F    | 7.4  | 7.6  | 0.291 | 0.299 |
| K0   | 2.55 | 2.75 | 0.100 | 0.108 |
| P0   | 3.9  | 4.1  | 0.153 | 0.161 |
| P1   | 7.9  | 8.1  | 0.311 | 0.319 |
| P2   | 1.9  | 2.1  | 0.075 | 0.082 |
| R    | 40   |      | 1.574 |       |
| W    | 15.7 | 16.3 | 0.618 | 0.641 |

For machine ref. only including draft and radii concentric around B0

10 pitches cumulative tolerance on tape +/- 0.2 mm

User Direction of Feed

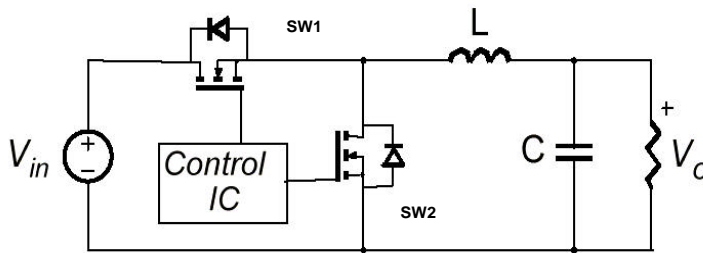
Center line of cavity

FEED DIRECTION

Bending radius R min.

## APPENDIX A

### Buck Converter: Power Losses Estimation



The power losses associated with the FETs in a Synchronous Buck converter can be estimated using the equations shown in the table below. The formulas give a good approximation, for the sake of performance comparison, of how different pairs of devices affect the converter efficiency. However a very important parameter, the working temperature, is not considered. The real device behavior is really dependent on how the heat generated inside the devices is removed to allow for a safer working junction temperature.

The low side (SW2) device requires:

- Very low  $R_{DS(on)}$  to reduce conduction losses
- Small  $Q_{gls}$  to reduce the gate charge losses
- Small  $C_{oss}$  to reduce losses due to output capacitance
- Small  $Q_{rr}$  to reduce losses on SW<sub>1</sub> during its turn-on
- The  $C_{gd}/C_{gs}$  ratio lower than  $V_{th}/V_{gg}$  ratio especially with low drain to source voltage to avoid the cross conduction phenomenon;

The high side (SW1) device requires:

- Small  $R_g$  and  $L_s$  to allow higher gate current peak and to limit the voltage feedback on the gate
- Small  $Q_g$  to have a faster commutation and to reduce gate charge losses
- Low  $R_{DS(on)}$  to reduce the conduction losses.

# STD90NH02L

|                         |            | High Side Switch (SW1)  | Low Side Switch (SW2)                               |
|-------------------------|------------|---|---|
| $P_{\text{conduction}}$ |            | $R_{\text{DS(on)SW1}} * I_L^2 * d$  | $R_{\text{DS(on)SW2}} * I_L^2 * (1-d)$              |
| $P_{\text{switching}}$  |            | $V_{\text{in}} * (Q_{\text{gsth(SW1)}} + Q_{\text{gd(SW1)}}) * f * \frac{I_L}{I_g}$ | Zero Voltage Switching                              |
| $P_{\text{diode}}$      | Recovery   | Not Applicable  | $^1 V_{\text{in}} * Q_{\text{rr(SW2)}} * f$         |
|                         | Conduction | Not Applicable  | $V_{\text{f(SW2)}} * I_L * t_{\text{deadtime}} * f$ |
| $P_{\text{gate(Q}_G)}$  |            | $Q_{\text{g(SW1)}} * V_{\text{gg}} * f$   | $Q_{\text{gls(SW2)}} * V_{\text{gg}} * f$           |
| $P_{\text{Qoss}}$       |            | $\frac{V_{\text{in}} * Q_{\text{oss(SW1)}} * f}{2}$                                 | $\frac{V_{\text{in}} * Q_{\text{oss(SW2)}} * f}{2}$ |

| Parameter          | Meaning                                      |
|--------------------|--|
| d                  | Duty-cycle                                   |
| $Q_{\text{gsth}}$  | Post threshold gate charge                   |
| $Q_{\text{gls}}$   | Third quadrant gate charge                   |
| <b>Pconduction</b> | On state losses                              |
| <b>Pswitching</b>  | On-off transition losses                     |
| <b>Pdiode</b>      | Conduction and reverse recovery diode losses |
| <b>Pgate</b>       | Gate drive losses                            |
| <b>PQoss</b>       | Output capacitance losses                    |

<sup>1</sup> Dissipated by SW1 during turn-on

Information furnished is believed to be accurate and reliable. However, STMicroelectronics assumes no responsibility for the consequences of use of such information nor for any infringement of patents or other rights of third parties which may result from its use. No license is granted by implication or otherwise under any patent or patent rights of STMicroelectronics. Specifications mentioned in this publication are subject to change without notice. This publication supersedes and replaces all information previously supplied. STMicroelectronics products are not authorized for use as critical components in life support devices or systems without express written approval of STMicroelectronics.

The ST logo is registered trademark of STMicroelectronics  
All other names are the property of their respective owners.

© 2003 STMicroelectronics - All Rights Reserved

STMicroelectronics GROUP OF COMPANIES

Australia - Belgium - Brazil - Canada - China - Czech Republic - Finland - France - Germany - Hong Kong - India - Israel - Italy - Japan -  
Malaysia - Malta - Morocco - Singapore - Spain - Sweden - Switzerland - United Kingdom - United States.

[www.st.com](http://www.st.com)