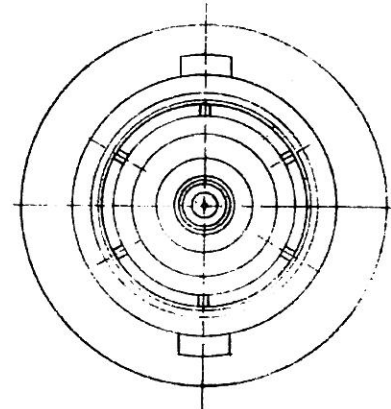
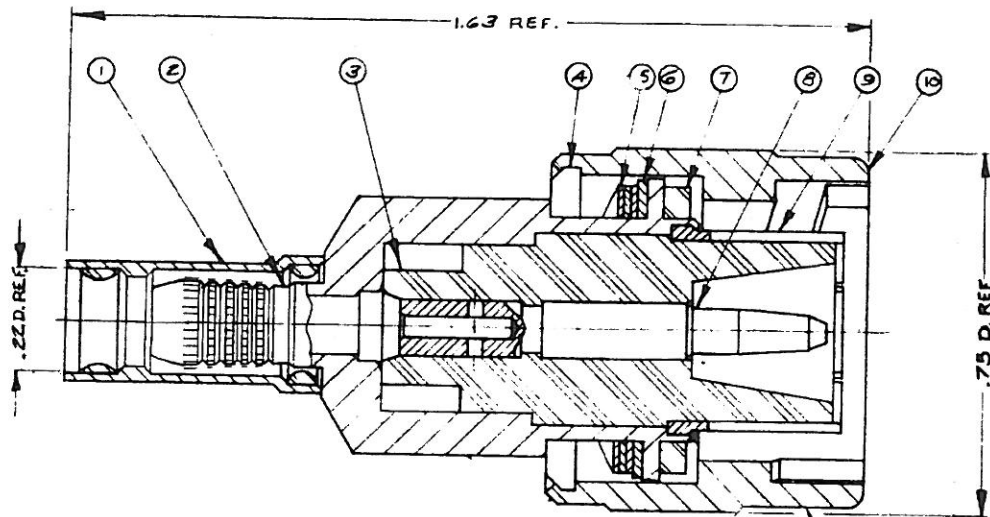


DASH NO.	DESCRIPTION	MADE FROM
----------	-------------	-----------



STAMP: KINGS KD-59-125

NOTES:

1. FOR USE WITH BA 13077A, BA 14349 & MI 5406 CABLES.
2. FOR CABLING INSTRUCTIONS SEE CP-5406
3. FOR CABLE TRIMMING USE KTW-160 & KTD-200.
4. FOR FORMING USE CRIMP DIE SIZE 103.
5. ITEMS ①, ②, ④ & ⑩ TO HAVE TR-5 FINISH.

UNLESS OTHERWISE SPECIFIED:

- | | |
|--|---|
| <ol style="list-style-type: none"> 1. TOLERANCES: FRACTIONS & 2 PLACE DECIMALS ± .010 3 PLACE DECIMALS ± .004 ANGLES ± 0° 30' T. I. R. CONCENTRICITY OF ANY 2 DIAMETERS MAY NOT EXCEED HALF THE SUM OF THEIR TOLERANCES. | <ol style="list-style-type: none"> 2. REMOVE ALL BURRS, BREAK SHARP EDGES .005 MAX. 3. NO FILLETS PERMITTED. 4. SURFACE ROUGHNESS 63 MICROINCHES RMS MAX. 5. ALL DIMENSIONS PRIOR TO PLATING. |
|--|---|

REVISIONS	
ISSUE	CHANGES
0	ER 14935 GA 21 OCT 75
1	CN 15721 C JHP 7 MAY 76
2	CN 16106 E KNURL SHOWN K-GRIP SLEEVE SHORTENED JHP 25 JUL 76
3	CN 29609 E KH 16 FEB 88
4	CN 29719 E LI 29 MAR 88
5	CN 29799 A LI 21 APR 88
6	CN 34167 C KH 28 OCT 92

KD-59-125

USED ON:	
REP:	BOEING
FINISH:	
SPEC:	
NATL:	
SPEC:	
C PLUG	
DRAWN GINO	DATE 21 OCT 75
APPR. SB	DATE 22 OCT 75
KINGS ELECTRONICS 40 MARBLEDALE ROAD TUCKAHOE, N. Y. 10707	
KD-59-125	

ITEM	REQ'D	DESCRIPTION	PART NO.
10	1	BAYONET SLEEVE	
9	1	OUTER CONTACT	
8	1	C CAPTIVE CRIMP CONTACT M	1-903-13-MA9
7	1	GASKET	
6	1	WASHER	
5	3	SPRING WASHER	
4	2	DAMP WASHER	
3	1	INSULATOR	
2	1	K-GRIP BODY	
1	1	W/P K-GRIP SLEEVE	A-19-B3-Z-M06

S-D