

**PLEASE CHECK WWW.MOLEX.COM FOR LATEST PART INFORMATION**

**Part Number:** [0357254210](#)  
**Status:** **Active**  
**Description:** 6.35mm (.250") Tab Slip-On Wire-to-Board Terminal, Female, 18-20 AWG, Post-Tin Plated

**Documents:**

[Drawing \(PDF\)](#) [Product Specification PS-35179-002 \(PDF\)](#)  
[Product Specification PS-35153-002 \(PDF\)](#) [RoHS Certificate of Compliance \(PDF\)](#)  
[Product Specification PS-35179-001 \(PDF\)](#)

**General**

Product Family	Crimp Terminals
Series	<a href="#">35725</a>
Crimp Quality Equipment	Yes
Product Name	N/A

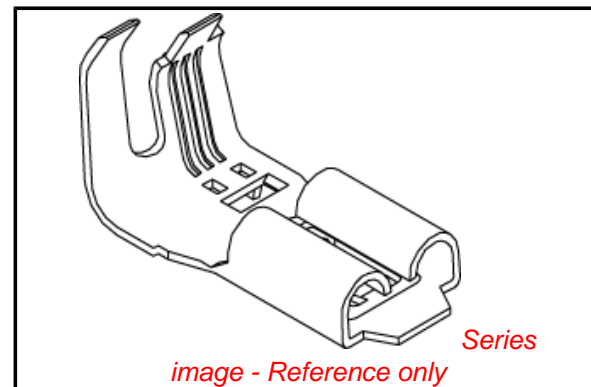
**Physical**

Gender	Female
Material - Metal	Brass
Material - Plating Mating	Tin
Material - Plating Termination	Tin
Packaging Type	Reel
Plating min: Mating (µin)	40
Plating min: Mating (µm)	1
Plating min: Termination (µin)	40
Plating min: Termination (µm)	1
Wire Insulation Diameter	2.55mm (.100") max.
Wire Size AWG	18, 20
Wire Size mm <sup>2</sup>	N/A

**Material Info**

**Reference - Drawing Numbers**

Product Specification	PS-35153-002, PS-35179-001, PS-35179-002
Sales Drawing	SD-35725-4**0



**EU RoHS**

**ELV and RoHS  
Compliant**  
**REACH SVHC  
Contains SVHC: No**  
**Halogen-Free  
Status**

**China RoHS**



**Need more information on product  
environmental compliance?**

Email [productcompliance@molex.com](mailto:productcompliance@molex.com)  
 For a multiple part number RoHS Certificate of Compliance, [click here](#)

Please visit the [Contact Us](#) section for any non-product compliance questions.

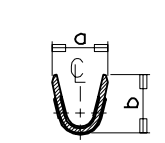
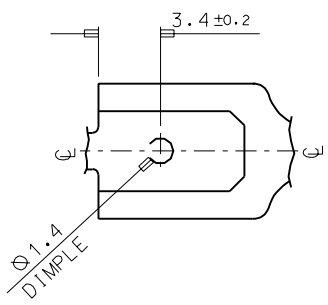
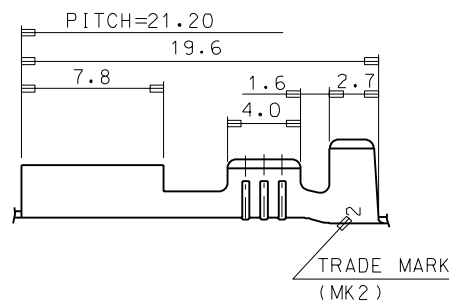
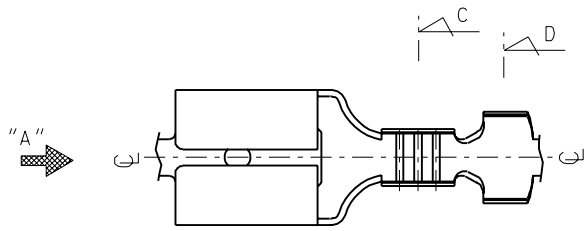
**Search Parts in this Series**

[35725Series](#)

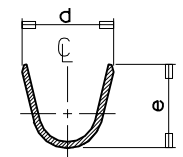
**Use With**

[35153](#) , [35179-0400](#)

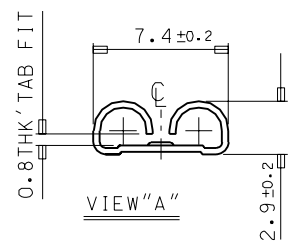
ENG. NO.	a	b	d	e	g	h	WIRE RANGE
35725-40*0	2.6	2.6	3.8	3.8	---	---	AWG #22-#20
35725-42*0	3.1	3.2	5.0	4.6	---	---	AWG #20-#18
35725-41*0	3.8	3.3	---	---	6.7	5.5	#20X2, #18X2



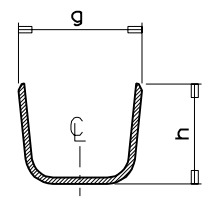
SECTION: C-C"



SECTION: D-D"



VIEW "A"



SECTION: D-D"

NOTES

1. PLATING: UNPLATED (35725-4000/4100/4200)  
POST-TIN PLATED (35725-4010/4110/4210)

DO NOT SCALE DRAWING DIMENSION IN METRIC			ASS'Y PART		QTY/REEL OR PACK	SURFACE AREA	MATERIAL	WIRE RANGE	GENERAL TOLERANCES	molex MOLEX-KOREA CO.,LTD.
			DESCRIPTION	ENG. NO.	4,000 Q'TY/REEL	MM <sup>2</sup>	C2680T-EH, 0.35THK'	AWG:	DIM. : ±0.3	
								MM <sup>2</sup> /	ANGLE :	
										REVISE ONLY ON CAD SYSTEM
										TITLE: .250 SLIP-ON RECEPTACLE 1 of 1
										ENG. NO. SD 35725-4**0
										REV A

ENG. NO.  
EDP NO.  
SIMILAR ITEM  
PROJECT NO.  
DO NOT SCALE DRAWING  
DIMENSION IN METRIC

F  
E  
D  
C  
B  
A