

PLEASE CHECK WWW.MOLEX.COM FOR LATEST PART INFORMATION

Part Number: **0781720411**
Status: **Active**
Overview: [picoezmate](#)
Description: 1.20mm (.047") Pitch Pico-EZmate™ Wire-to-Board Crimp Terminal, Gold (Au) Flash over Nickel (Ni) Plated, Lead free

Documents:

[Drawing \(PDF\)](#) [RoHS Certificate of Compliance \(PDF\)](#)
[Product Specification PS-78171-010 \(PDF\)](#)

Agency Certification

CSA LR19980
 UL E29179

General

Product Family Crimp Terminals
 Series [78172](#)
 Crimp Quality Equipment Yes
 Overview [picoezmate](#)
 Product Name Pico-EZmate™

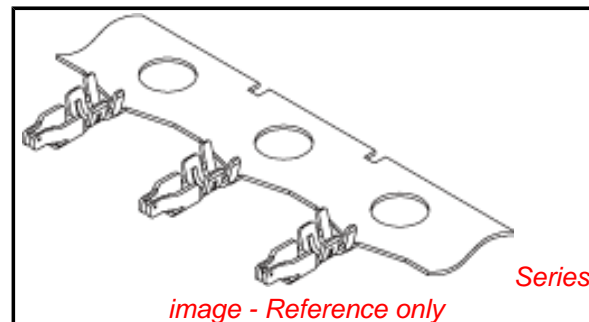
Physical

Durability (mating cycles max) 10
 Flammability 94V-0
 Gender Receptacle
 Material - Metal Copper-Nickel-Silicon
 Material - Plating Mating Gold
 Material - Plating Termination Gold
 Packaging Type Reel
 Termination Interface: Style Crimp or Compression
 Wire Insulation Diameter 0.60mm(.024") and 0.70mm(.028)
 Wire Size AWG 28, 30
 Wire Size mm² N/A

Material Info

Reference - Drawing Numbers

Application Specification AS-78172-001, AS-78172-006
 Packaging Specification PK-89990-681
 Product Specification PS-78171-010, RPS-78171-007
 Sales Drawing SD-78172-009



EU RoHS

ELV and RoHS Compliant
REACH SVHC Contains SVHC: No
Halogen-Free Status
Halogen-Free

China RoHS



Need more information on product environmental compliance?

Email productcompliance@molex.com
 For a multiple part number RoHS Certificate of Compliance, [click here](#)

Please visit the [Contact Us](#) section for any non-product compliance questions.

Search Parts in this Series

[78172Series](#)

Mates With

[78171 PCB Header](#)

Use With

[78172 Crimp Receptacle...](#)

Application Tooling | FAQ

Tooling specifications and manuals are found by selecting the products below. Crimp Height Specifications are then contained in the Application Tooling Specification document.

Global

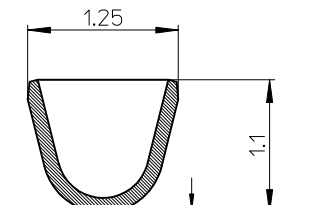
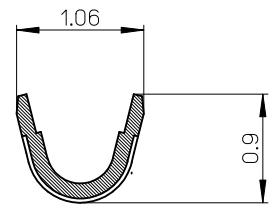
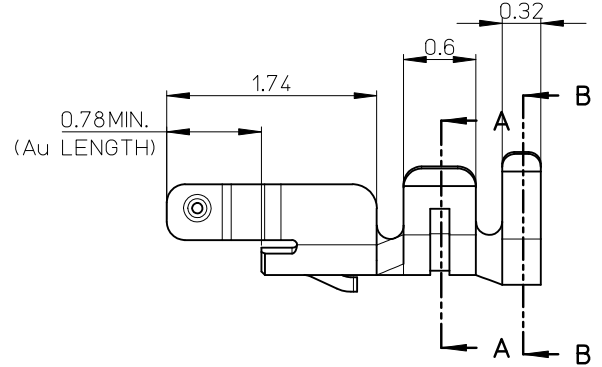
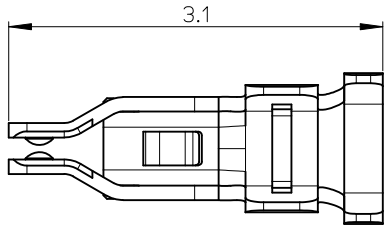
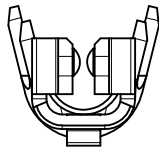
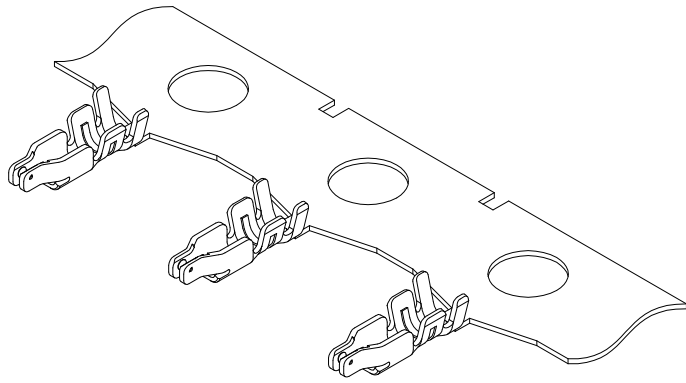
Description	Product #
FineAdjust™ Applicator for 1.20mm (.047") Pico-EZMate™ Wire-to-Board Terminals	0639011300
T2 Terminator for 1.20mm (.047") Pico-Ezmate™, 28-30 AWG	0639111300

Hand Crimp Tool for 0638194300
Pico-Ezmate™ Wire-
to-Board Terminal,
28-30 AWG for loose
parts only
Extraction Tool 0638132700
Hand Tool for 0638194800
1.20mm (.047")
Pitch Pico-Ezmate™
Crimp Terminals,
28 AWG for reeled
product
Hand Tool for 0638230100
1.20mm (.047")
Pitch Pico-Ezmate™
Crimp Terminals,
30 AWG for reeled
product

This document was generated on 05/20/2010

PLEASE CHECK WWW.MOLEX.COM FOR LATEST PART INFORMATION

CONFIDENTIAL



SECTION A-A
(CONDUCTOR BARREL)

SECTION B-B
(INSULATION BARREL)

NOTES:

- 材質：コルソン銅
MATERIAL：COPPER-NICKEL-SILICON ALLOY
- メッキ：全面Ni下地 部分AuFlash1.0μ以上
PLATING：GOLD FLASH OVER 1.0uMIN. NICKEL OVERALL
- 適用ハウジング：78172-00**,503214-0*01
APPLICABLE HOUSING：78172-00**,503214-0*01
- 適用圧着工具：アプリケーター：578059-3000
：圧着機：57275-4000
APPLICABLE CRIMP TOOL (SEMI-AUTOMATIC):578059-3000(APPLY TO 57275-4000)
- 圧着仕様書 CS-78172-013 を参照のこと。
REFER TO CRIMPING SPECIFICATION CS-78172-013
- 製品の取り扱いについては、コネクタ取り扱い説明書(AS-78172-007)を参照のこと。
PLEASE REFER TO INSTRUCTION MANUAL(AS-78172-007)
- 参考として本製品評価時に使用の電線使用を以下に示します。
THE ELECTRIC WIRE SPECIFICATION USED AS REFERENCE AT THE TIME OF THIS PRODUCT EVALUATION IS SHOWN BELOW.

※製品評価時使用電線

住友電工(株)製 UL3302電線
SUMITOMO ELECTRIC INDUSTRIES,LTD.:UL STYLE 3302

電線サイズ WIRE SIZE	導体仕様 CONDUCTOR SPEC.	導体構成 STRANDING (No./mm)	導体外径 CONDUCTOR DIA. (mm)	絶縁体外径 INSURATION DIA. (mm)
AWG# 30	錫メッキ軟銅線 (TINED ANNEALED COPPER)	7/0.10	0.30	0.70

古河電気工業(株)製 UL3302 エコソフレックス電線
FURUKAWA ELECTRIC CO.LTD.:UL STYLE 3302 ECOSOFLEX WIRE.

電線サイズ WIRE SIZE	導体仕様 CONDUCTOR SPEC.	導体構成 STRANDING (No./mm)	導体外径 CONDUCTOR DIA. (mm)	絶縁体外径 INSURATION DIA. (mm)
AWG# 28	錫メッキ軟銅線 (TINED ANNEALED COPPER)	7/0.127	0.38	0.6

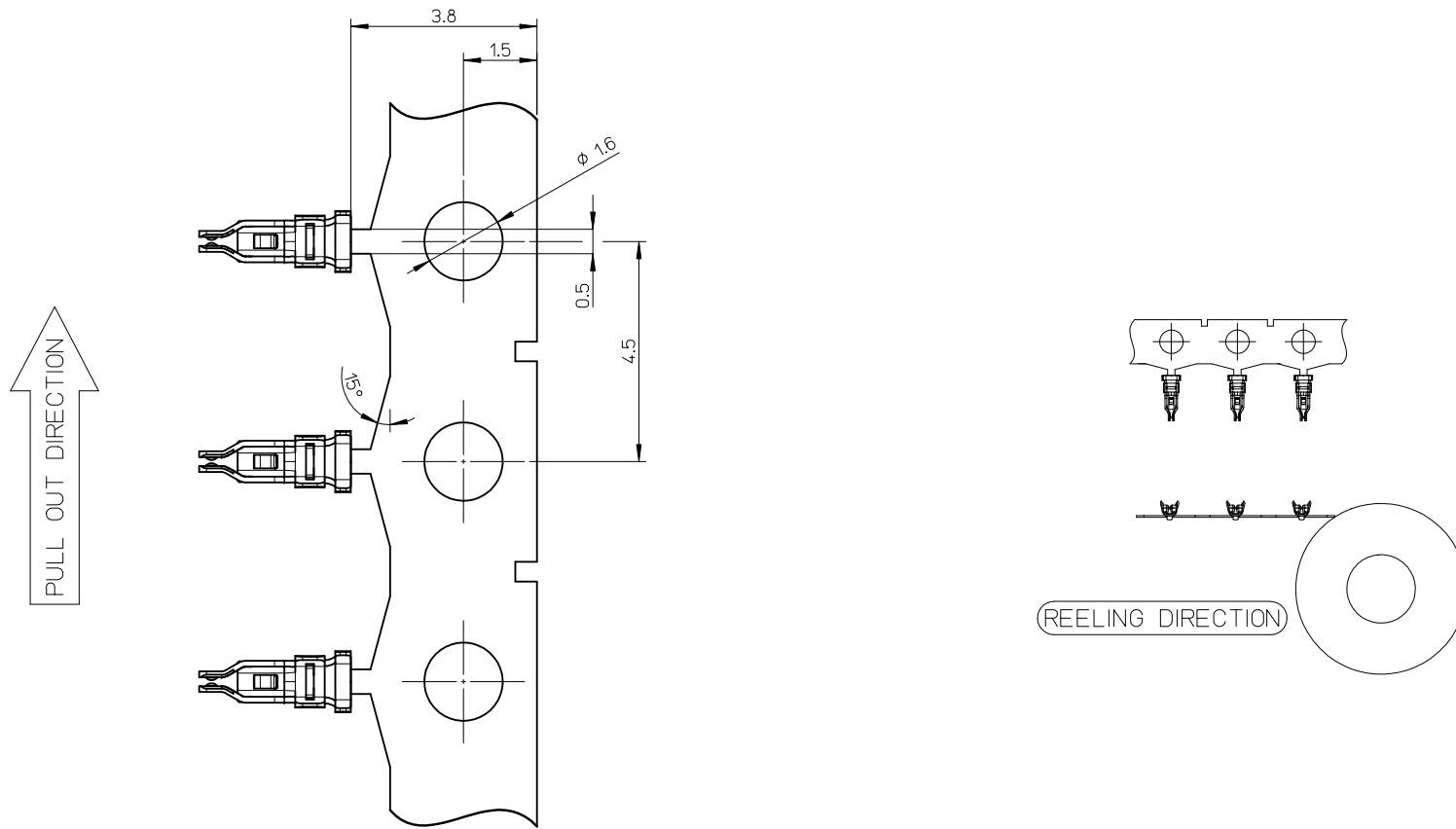
8. ELV及びRoHS適合品

ELV AND RoHS COMPLIANT

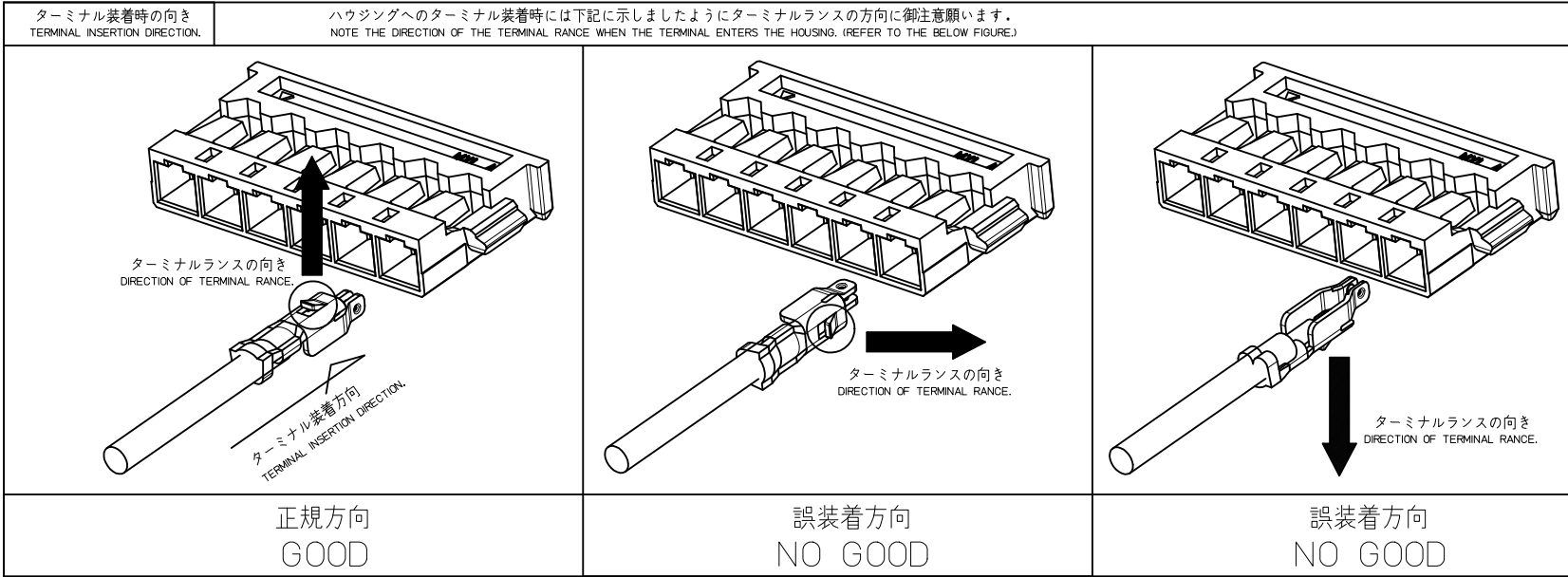
OPTIONAL TOOL MARK FOR TOOL RECOGNITION PURPOSE

CHAIN	78172-0411	78172-****
FORM	MATERIAL NO.	MODEL NO.

REVISED EC NO.: J2010-0783 DRAWN:CLAM 2009/11/12 CHKD:L.SLEE 2009/12/11 APPR:NUKITA 2009/12/14	DESCRIPTION	GENERAL TOLERANCES (UNLESS SPECIFIED)		DIMENSION STYLE MM ONLY		SCALE 20:1	DESIGN UNITS METRIC	THIRD ANGLE PROJECTION
		10 UNDER	± 0.30	DRAWN BY	DATE			
		10 OVER 30 UNDER	± ---	SSHIMONISHI	2008/04/07			
		30 OVER	± ---	HTAKASE	2008/04/07			
ANGULAR ±1 °		APPROVED BY	DATE	TITLE		1.20MM PITCH, W-T-B 1.40MM HEIGHT RECEPTACLE CONNECTOR MOLEX INCORPORATED		
DRAFT WHERE APPLICABLE MUST REMAIN WITHIN DIMENSIONS		NUKITA	2008/04/07	DOCUMENT NO.				
SEE CHART		MATERIAL NO.		SD-78172-009				
SIZE A3		THIS DRAWING CONTAINS INFORMATION THAT IS PROPRIETARY TO MOLEX INCORPORATED AND SHOULD NOT BE USED WITHOUT WRITTEN PERMISSION						



REVISED EC NO: J2010-0783 DRWN:CLAM 2009/11/12 CHKD:LSLEE 2009/12/11 APPR:NUKITA 2009/12/14	GENERAL TOLERANCES (UNLESS SPECIFIED)		DIMENSION STYLE MM ONLY	SCALE 1:1	DESIGN UNITS METRIC	THIRD ANGLE PROJECTION
	10 UNDER	± 0.30	DRAWN BY SSHIMONISHI	DATE 2008/04/07	TITLE 1.20MM PITCH, W-T-B 1.40MM HEIGHT RECEPTACLE CONNECTOR	
	10 OVER 30 UNDER	± ---	CHECKED BY HTAKASE	DATE 2008/04/07	MOLEX INCORPORATED	
	30 OVER	± ---	APPROVED BY NUKITA	DATE 2008/04/07	MATERIAL NO. SEE SHEET 1	DOCUMENT NO. SD-78172-009
	ANGULAR ± 1 °	DRAFT WHERE APPLICABLE MUST REMAIN WITHIN DIMENSIONS		THIS DRAWING CONTAINS INFORMATION THAT IS PROPRIETARY TO MOLEX INCORPORATED AND SHOULD NOT BE USED WITHOUT WRITTEN PERMISSION		



REVISED EC NO: J2010-0783 DRWN: CWLAM 2009/11/12 CHKD: LSLEE 2009/12/11 APPR: NUKITA 2009/12/14	GENERAL TOLERANCES (UNLESS SPECIFIED)		DIMENSION STYLE MM ONLY	SCALE 1:1	DESIGN UNITS METRIC	THIRD ANGLE PROJECTION	
	10 UNDER	± 0.30	DRAWN BY SSHIMONISHI	DATE 2008/04/07	TITLE 1.20MM PITCH, W-T-B 1.40MM HEIGHT RECEPTACLE CONNECTOR		
	10 OVER 30 UNDER	± ---	CHECKED BY HTAKASE	DATE 2008/04/07	MOLEX INCORPORATED		
	30 OVER	± ---	APPROVED BY NUKITA	DATE 2008/04/07	MATERIAL NO. SEE SHEET 1	DOCUMENT NO. SD-78172-009	SHEET NO. 3 OF 3
B	DESCRIPTION ANGULAR ±1 ° DRAFT WHERE APPLICABLE MUST REMAIN WITHIN DIMENSIONS	THIS DRAWING CONTAINS INFORMATION THAT IS PROPRIETARY TO MOLEX INCORPORATED AND SHOULD NOT BE USED WITHOUT WRITTEN PERMISSION					