



# TAI-SAW TECHNOLOGY CO., LTD.

No. 3, Industrial 2nd Rd., Ping-Chen Industrial District,  
Taoyuan, 324, Taiwan, R.O.C.

TEL: 886-3-4690038 FAX: 886-3-4697532

E-mail: [tstsales@mail.taisaw.com](mailto:tstsales@mail.taisaw.com) Web: [www.taisaw.com](http://www.taisaw.com)

## Approval Sheet For Product Specification

Issued Date:

Product Name: SAW Resonator 359.4 MHz SMD 3.8X3.8 mm

TST Parts No.: TC0310A

Customer Parts No.: \_\_\_\_\_

Company: _____
Division: _____
Approved by : _____
Date: _____

Checked by: \_\_\_\_\_ Asin Lin

Approval by: \_\_\_\_\_ Francis Chen

Date: \_\_\_\_\_ 2006/03/08



# TAI-SAW TECHNOLOGY CO., LTD.

No. 3, Industrial 2nd Rd., Ping-Chen Industrial District,  
Taoyuan, 324, Taiwan, R.O.C.

TEL: 886-3-4690038 FAX: 886-3-4697532

E-mail: [tstsales@mail.taisaw.com](mailto:tstsales@mail.taisaw.com) Web: [www.taisaw.com](http://www.taisaw.com)

## SAW Resonator 359.4 MHz

MODEL NO.: TC0310A

REV. NO.:2

### A. FEATURES:

- 1-Port Resonator.

### B. MAXIMUM RATING:

1. Input Power Level: 0 dBm
2. DC voltage: 12 V
3. Operating Temperature: -40°C to +85°C
4. Storage Temperature: -40°C to +85°C

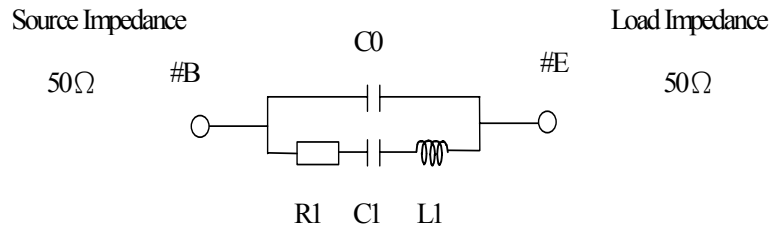
### C. ELECTRICAL CHARACTERISTICS:

Characteristic	Units	Minimum	Typical	Maximum
Center frequency <b>Fr</b>	<b>MHz</b>	359.325	359.4	359.475
Insertion Loss <b>IL</b>	<b>dB</b>		1.3	2.0
Unloaded Quality factor		-	7645	-
Equivalent Elements				
Motional capacitance <b>C1</b>	<b>fF</b>	-	2.918	-
Motional inductance <b>L1</b>	<b>μH</b>	-	67.21	-
Motional resistance <b>R1</b>	<b>Ohm</b>	-	19.85	-
Parallel capacitance <b>Co</b>	<b>pF</b>	-	4.26	-
Temp. coeff.	<b>ppm/c*2</b>	-	0.032	-
Turnover To	<b>deg.C</b>	-	25	-
Package size		SMD 3.8X3.8X1.4mm		

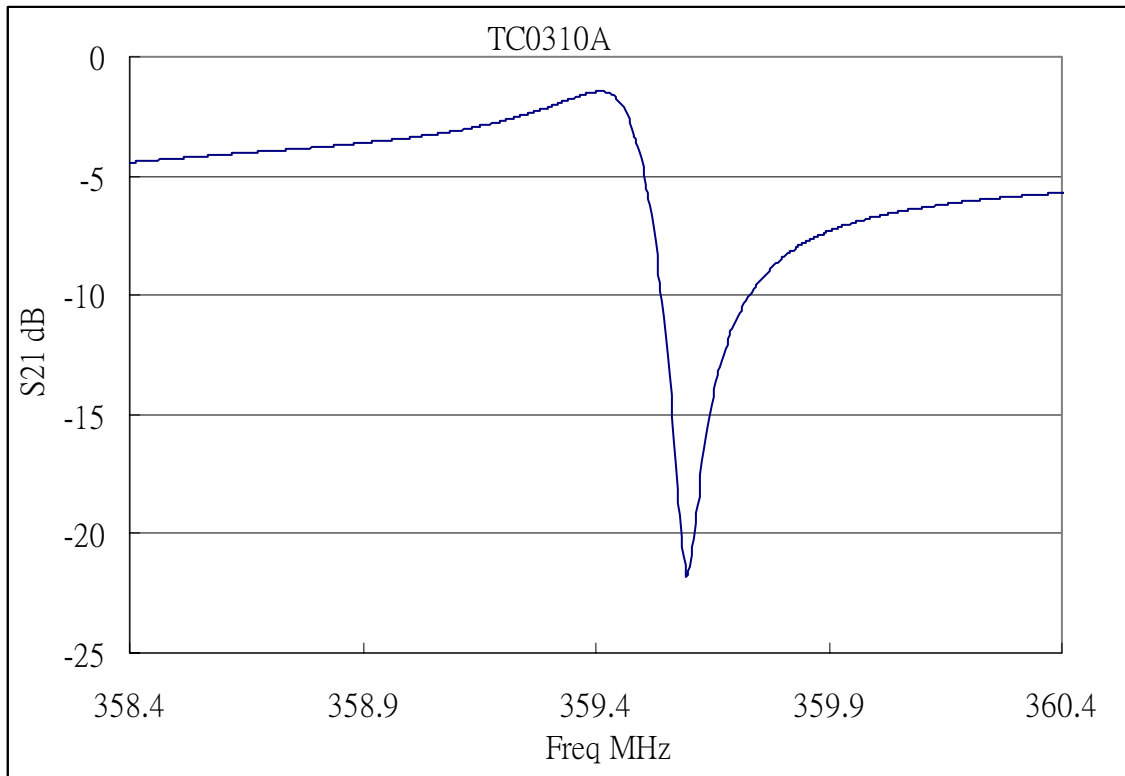
RoHS Compliant  
Lead free  
Lead-free soldering

### D. EQUIVIRENT CIRCUIT:

One-Port Resonator:

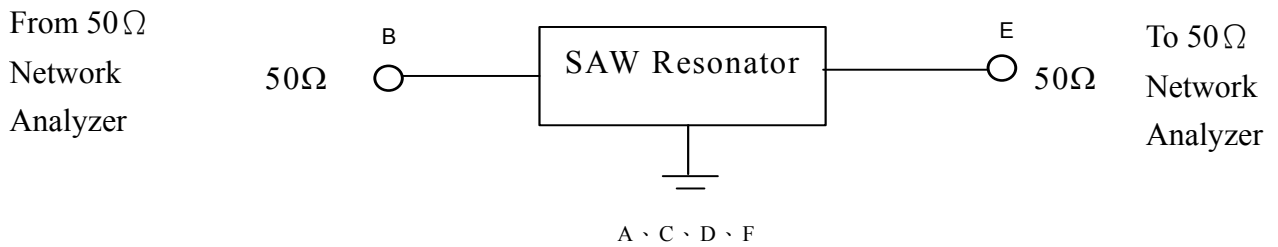


**E. FREQUENCY CHARACTERISTICS:**

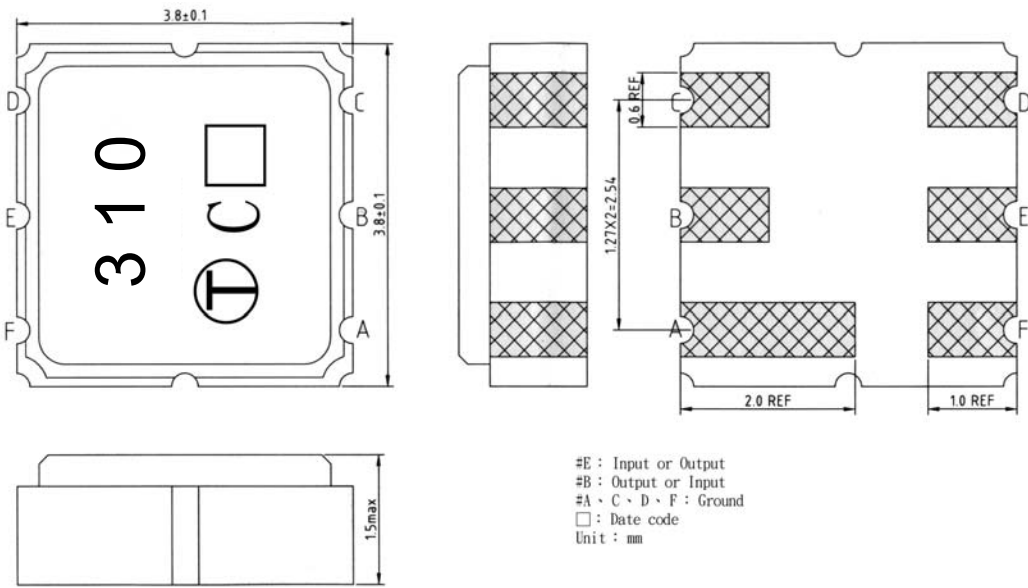


**F. TEST CIRCUIT:**

Network analyzer



**G. OUTLINE DRAWING:**

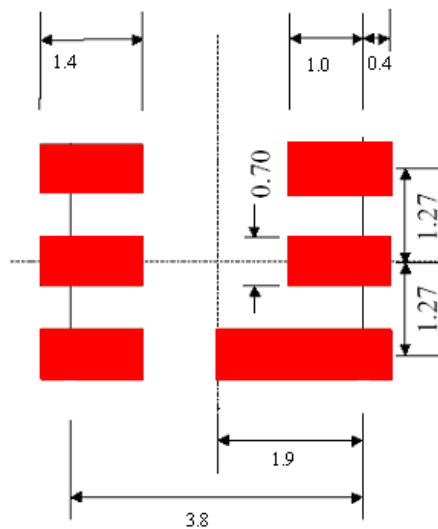


□ Date code: Provided by planer each year

**Product Year Code**

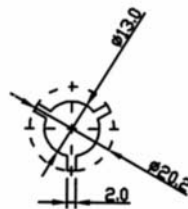
Year	2001	2002
	2003	2004
	2005	2006
	.	.
Product Code	C	c

**H. PCB FOOTPRINT:**

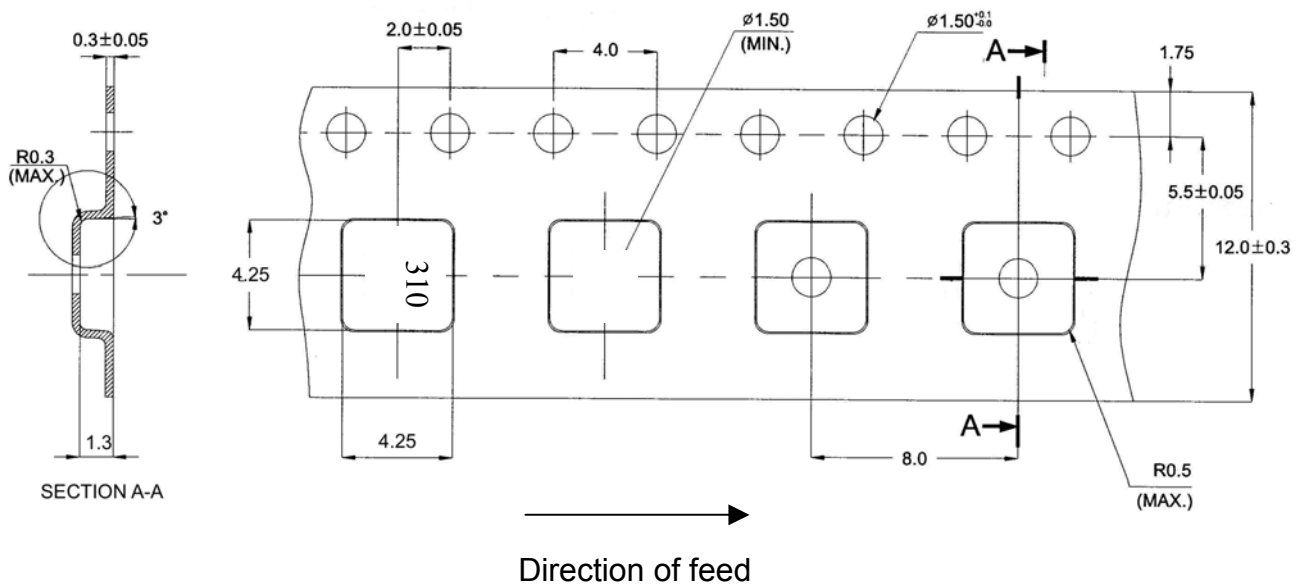


I. PACKING:

1. REEL DIMENSION



2. TAPE DIMENSION



## J. REFLOW PROFILE

