

**PLEASE CHECK WWW.MOLEX.COM FOR LATEST PART INFORMATION**

**Part Number:** [0399400316](#)  
**Status:** **Active**  
**Description:** 5.08mm (.200") Pitch Beau™ EuroMate™ Pluggable PCB Terminal Block, Dual Level, 270° Wire Entry, 16 Circuits

**Documents:**

[Drawing \(PDF\)](#) [RoHS Certificate of Compliance \(PDF\)](#)  
[Product Specification PS-39940-001 \(PDF\)](#)

**Agency Certification**

UL E48521

**General**

Product Family	Terminal Blocks
Series	<a href="#">39940</a>
Application	Wire-to-Board
Comments	Gold plating available
Component Type	Plug
Product Literature Order No	USA-264
Product Name	EuroMate™ Pluggable
Type	Euro Block

**Physical**

Circuits (Loaded)	16
Color - Resin	Black
Entry Angle	Horizontal
Flammability	94V-0
Lock to Mating Part	None
Material - Resin	Nylon
Number of Rows	2
Orientation	Vertical
Panel Mount	No
Pitch - Mating Interface (in)	0.200 In
Pitch - Mating Interface (mm)	5.08 mm
Polarized to Mating Part	Yes
Stackable	No
Temperature Range - Operating	130°C
Termination Interface: Style	Screw or Lug
Wire Size AWG	12, 14, 16, 18, 20, 22
Wire Size mm²	0.50 - 2.50

**Electrical**

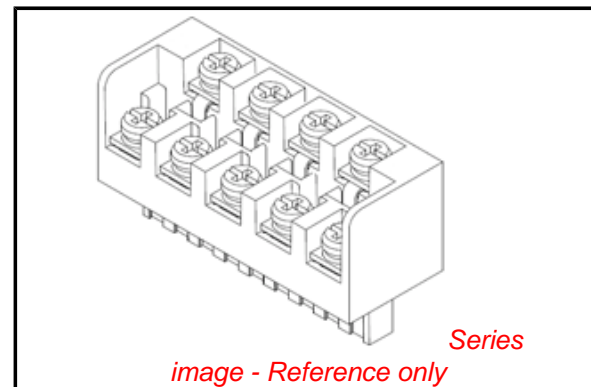
Current - Maximum per Contact	15A
Voltage - Maximum	300V

**Material Info**

Old Part Number 940916

**Reference - Drawing Numbers**

Product Specification	PS-39940-001
Sales Drawing	SD-39940-005



**EU RoHS**

**ELV and RoHS  
Compliant**  
**REACH SVHC**  
 Not Reviewed  
**Halogen-Free  
Status**  
 Not Reviewed

**China RoHS**



**Need more information on product environmental compliance?**

Email [productcompliance@molex.com](mailto:productcompliance@molex.com)  
 For a multiple part number RoHS Certificate of Compliance, [click here](#)

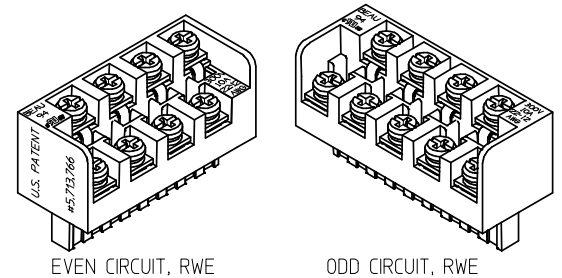
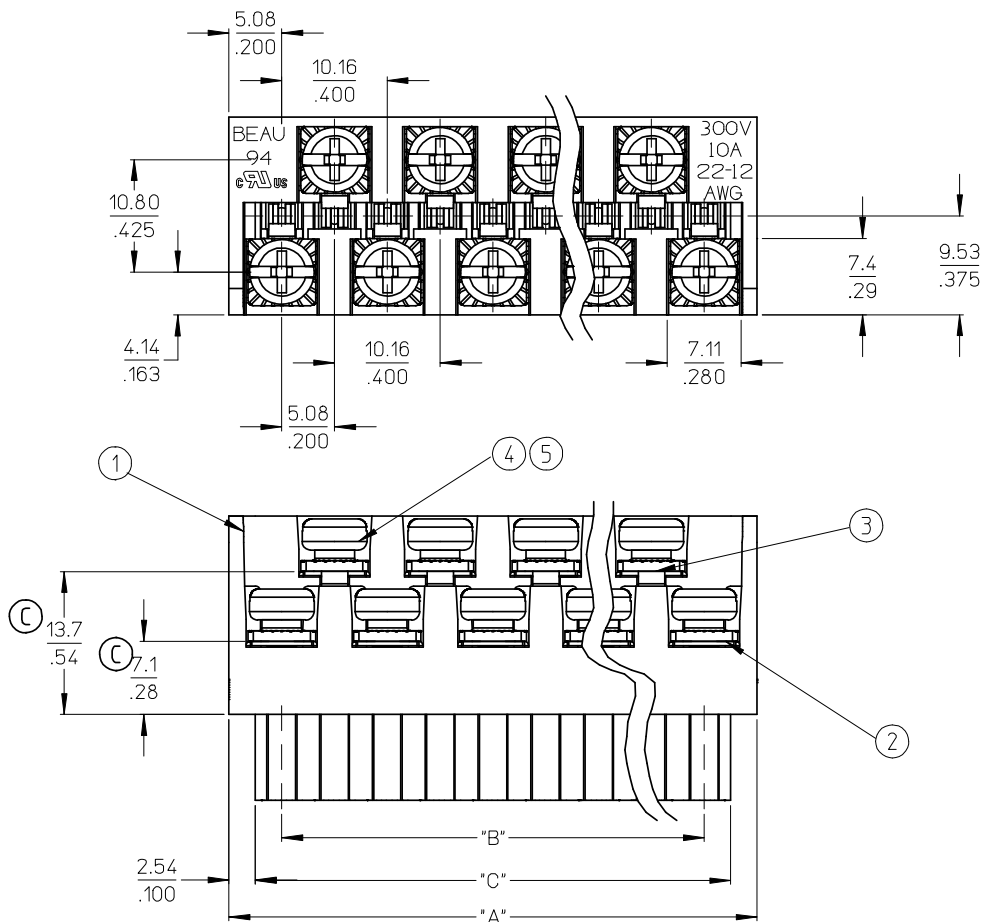
Please visit the [Contact Us](#) section for any non-product compliance questions.

**Search Parts in this Series**

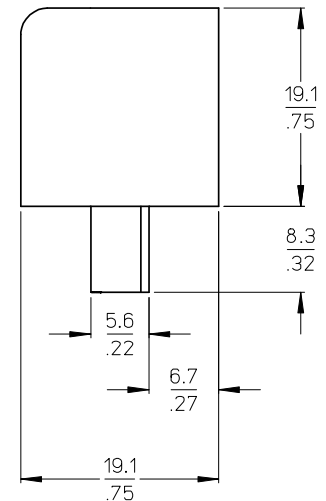
[39940Series](#)

**Mates With**

[39531-0016](#) , [39531-1016](#) , [39532-0016](#) , [39532-1016](#)



AUXILIARY VIEWS  
SCALE 1:1



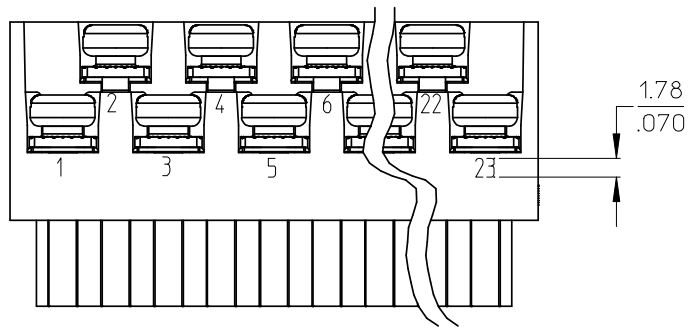
- NOTES:
1. MATERIAL: SEE TABLE
  2. FINISHES: SEE TABLE
  3. PRODUCT SPECIFICATION: NOT REQUIRED
  4. PACKAGING: NOT REQUIRED
  5. MATES WITH: MOST 5.08 (.200) PIN HEADERS
  6. "XX" REFERS TO THE QUANTITY OF CIRCUITS
  7. ROHS COMPLIANT

ODD CIRCUIT CONFIGURATION SHOWN

5	XX	XX	SCREW, M3.5 X .280	STEEL	ZINC CHROMATE
4	XX	XX	NUT, M3.5, HEX	STEEL	ZINC CHROMATE
3	XX/2	(XX-1)/2	REAR ROW TERM. (LONG)	PHOS. BRONZE	HOT TIN DIP
2	XX/2	(XX+1)/2	FRONT ROW TERM. (SHORT)	PHOS. BRONZE	HOT TIN DIP
1	1	1	BARRIER	THERMOPLASTIC	BLACK
ITEM	QTY. (EVEN NO. OF CIRCUITS)	QTY. (ODD NO. OF CIRCUITS)	DESCRIPTION	MATERIAL	FINISH

<b>REVISED &amp; REDRAWN</b> EC NO: WNA2008-0391 DRWN: JENC INAS 2008/07/01 CH'KD: CYORK 2008/07/02 APPR: JMACNEIL 2008/07/07 REV DESCRIPTION	QUALITY SYMBOLS ▽=0 ▽=0		GENERAL TOLERANCES (UNLESS SPECIFIED)		DIMENSION STYLE MM/IN		SCALE 2:1		DESIGN UNITS INCH		THIRD ANGLE PROJECTION		
	4 PLACES ± --- ± --- 3 PLACES ± --- ± .005 2 PLACES ± 0.13 ± .01 1 PLACE ± 0.3 ± ---		ANGULAR ± 2 °		DRAWN BY J. FARMER 2004/12/03		DATE 2004/12/03		TITLE 5.08/.200 PLUG ASSY, FWE WITH CLOSED ENDS (9409XX)				
	DRAFT WHERE APPLICABLE MUST REMAIN WITHIN DIMENSIONS				MATERIAL NO. SEE SHEET 2		APPROVED BY GHR 2004/12/03		DATE 2004/12/03		DOCUMENT NO. MOLEX INCORPORATED SD-39940-005		SHEET NO. 1 OF 2
	THIS DRAWING CONTAINS INFORMATION THAT IS PROPRIETARY TO MOLEX INCORPORATED AND SHOULD NOT BE USED WITHOUT WRITTEN PERMISSION												

NO. OF CIRC. "XX"	"A" DIM.	"B" DIM.	"C" <sup>+0.00</sup> <sub>-.25</sub> [ <sup>+0.000</sup> <sub>-.010</sub> ]	MATERIAL NO. (STANDARD)
03	20.3 [.80]	10.16 [.400]	15.2 [.60]	399400303
04	25.4 [1.00]	15.24 [.600]	20.3 [.80]	399400304
05	30.5 [1.20]	20.32 [.800]	25.4 [1.00]	399400305
06	35.6 [1.40]	25.40 [1.000]	30.5 [1.20]	399400306
07	40.6 [1.60]	30.48 [1.200]	35.6 [1.40]	399400307
08	45.7 [1.80]	35.56 [1.400]	40.6 [1.60]	399400308
09	50.8 [2.00]	40.64 [1.600]	45.7 [1.80]	399400309
10	55.9 [2.20]	45.72 [1.800]	50.8 [2.00]	399400310
11	61.0 [2.40]	50.80 [2.000]	55.9 [2.20]	399400311
12	66.0 [2.60]	55.88 [2.200]	61.0 [2.40]	399400312
13	71.1 [2.80]	60.96 [2.400]	66.0 [2.60]	399400313
14	76.2 [3.00]	66.04 [2.600]	71.1 [2.80]	399400314
15	81.3 [3.20]	71.12 [2.800]	76.2 [3.00]	399400315
16	86.4 [3.40]	76.20 [3.000]	81.3 [3.20]	399400316
17	91.4 [3.60]	81.28 [3.200]	86.4 [3.40]	399400317
18	96.5 [3.80]	86.36 [3.400]	91.4 [3.60]	399400318
19	101.6 [4.00]	91.44 [3.600]	96.5 [3.80]	399400319
20	106.7 [4.20]	96.52 [3.800]	101.6 [4.00]	399400320
21	111.8 [4.40]	101.60 [4.000]	106.7 [4.20]	399400321
22	116.9 [4.60]	106.68 [4.200]	111.8 [4.40]	399400322
23	121.9 [4.80]	111.76 [4.400]	116.8 [4.60]	399400323
24	127.0 [5.00]	116.84 [4.600]	121.9 [4.80]	399400324



OPTIONAL  
10A IMPRINTING  
(ODD CIRCUIT CONFIGURATION SHOWN)

SEE SHEET ONE EEC NO: WNA2008-0391 DRWN: JENCINAS 2008/07/01 CHKD: CYORK 2008/07/02 APPR: JMACNEIL 2008/07/07	REV DESCRIPTION 0 QUALITY SYMBOLS 1 = 0 2 = 0	GENERAL TOLERANCES (UNLESS SPECIFIED)		DIMENSION STYLE MM/IN	SCALE 2:1	DESIGN UNITS INCH	THIRD ANGLE PROJECTION	
		4 PLACES ± --- ± ---	mm INCH	DRAWN BY J. FARMER	DATE 2004/12/03	TITLE 5.08/.200 PLUG ASSY, FWE WITH CLOSED ENDS (9409XX)		
		3 PLACES ± --- ± .005		CHECKED BY R. KEMP	DATE 2004/12/03	MOLEX INCORPORATED		
		2 PLACES ± 0.13 ± .01		APPROVED BY GHR	DATE 2004/12/03	MATERIAL NO. SEE CHART	DOCUMENT NO. SD-39940-005	SHEET NO. 2 OF 2
		1 PLACE ± 0.3 ± ---		ANGULAR ± 2 °		DRAFT WHERE APPLICABLE MUST REMAIN WITHIN DIMENSIONS		
THIS DRAWING CONTAINS INFORMATION THAT IS PROPRIETARY TO MOLEX INCORPORATED AND SHOULD NOT BE USED WITHOUT WRITTEN PERMISSION								