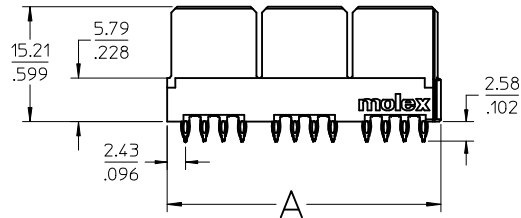
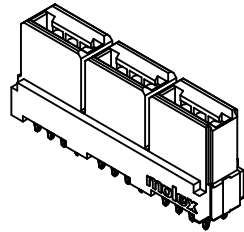
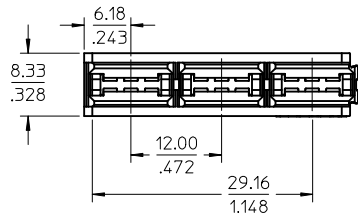


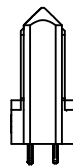
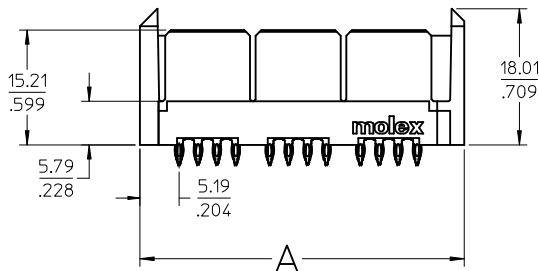
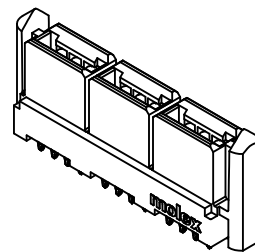
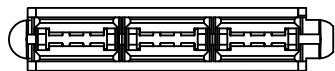
P/N 46112-601 SHOWN



NOTES:

1. MATERIAL: HOUSING: LCP, 94-V0, COLOR: BLACK.
POWER CONTACTS: COPPER ALLOY.
SIGNAL CONTACTS: MODIFIED TIN BRASS.
2. FINISH: SELECT GOLD - 0.75 μM/30 μ INCHES
SELECTED TIN - 1.91 μM/75 μ INCHES
OR SELECTED TIN-LEAD - 1.91 μM/75 μ INCHES
BOTH OVER NICKEL - 1.25 μM/50 μ INCHES
3. POWER CONTACTS ARE LUBRICATED IN CONTACT AREA.
4. PARTS ARE RoHS COMPLIANT.
5. MATES TO MOLEX P/N 45985-SERIES OR EDGE CARD 1.57/.062.
6. PRODUCT SPECIFICATION PS-46114-001.
7. PACKAGING: PER PK-46114-003.

P/N 46112-603 SHOWN



POWER HOUSING ASSY W/ INTERLOCK

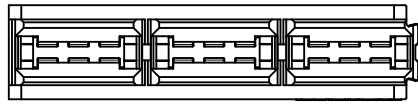
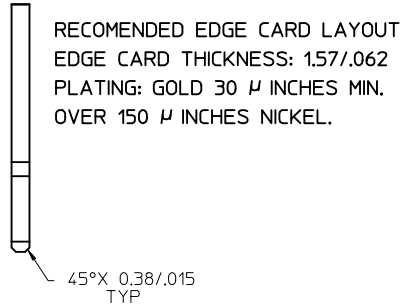
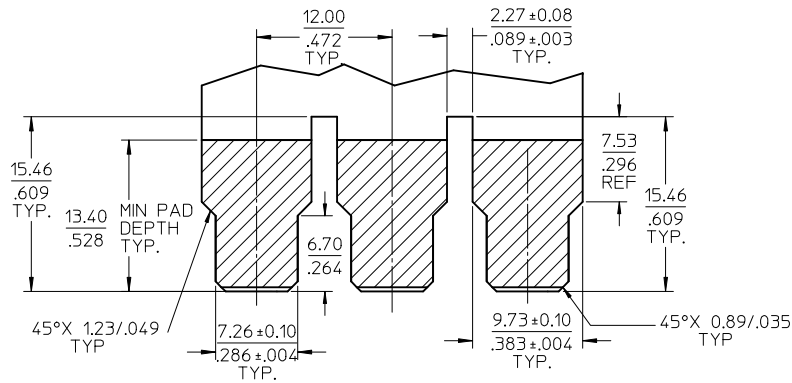
| NO OF CKT | MATERIAL NUMBER | COMPLIANT PIN PLATING | DIM A | DIM B SEE SHT 2 | DIM C SEE SHT 2 |
|-----------|-----------------|-----------------------|-------------|-----------------|-----------------|
| 2 | 46112-0201 | TIN | 12.24/1.482 | 12.75/1.502 | 2.69/1.106 |
| | 46112-0205 | TIN-LEAD | | | |
| 4 | 46112-0401 | TIN | 24.24/1.954 | 24.74/1.974 | |
| | 46112-0405 | TIN-LEAD | | | |
| 6 | 46112-0601 | TIN | 36.24/1.427 | 36.75/1.447 | |
| | 46112-0605 | TIN-LEAD | | | |
| 8 | 46112-0801 | TIN | 48.24/1.899 | 48.74/1.919 | |
| | 46112-0805 | TIN-LEAD | | | |
| 10 | 46112-1001 | TIN | 60.24/2.372 | 60.76/2.392 | |
| | 46112-1005 | TIN-LEAD | | | |
| 12 | 46112-1201 | TIN | 75.00/2.953 | 75.51/2.973 | |
| | 46112-1205 | TIN-LEAD | | | |
| 14 | 46112-1401 | TIN | 84.24/3.317 | 84.76/3.337 | |
| | 46112-1405 | TIN-LEAD | | | |

POWER HOUSING ASSY WITH (2) GUIDES

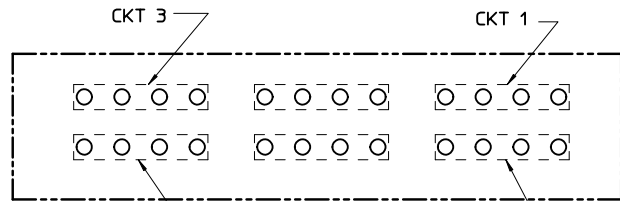
| NO OF CKT | MATERIAL NUMBER | COMPLIANT PIN PLATING | DIM A | DIM B | DIM C |
|-----------|-----------------|-----------------------|-------------|-------------|------------|
| 2 | 46112-0203 | TIN | 18.94/1.746 | 19.46/1.766 | 5.45/1.215 |
| | 46112-0206 | TIN-LEAD | | | |
| 4 | 46112-0403 | TIN | 30.94/1.218 | 31.45/1.238 | |
| | 46112-0406 | TIN-LEAD | | | |
| 6 | 46112-0603 | TIN | 42.94/1.691 | 43.46/1.711 | |
| | 46112-0606 | TIN-LEAD | | | |
| 8 | 46112-0803 | TIN | 54.94/2.163 | 55.45/2.183 | |
| | 46112-0806 | TIN-LEAD | | | |
| 10 | 46112-1003 | TIN | 66.94/2.635 | 67.44/2.655 | |
| | 46112-1006 | TIN-LEAD | | | |
| 12 | 46112-1203 | TIN | 78.94/3.108 | 79.45/3.128 | |
| | 46112-1206 | TIN-LEAD | | | |
| 14 | 46112-1403 | TIN | 90.94/3.580 | 91.44/3.600 | |
| | 46112-1406 | TIN-LEAD | | | |

| | | | | | | | | | |
|----------------------------------------------------------------------------------------------------------------------------------|-------------|---------------------------------------------------------|-----------------------|--------------------------|--------------|---------------------------------------------------------------------------------|------------------------|---------------------|--|
| PRESS-FIT ADDED EC NO: UCP2010-1199 DRW:MKRADI/MAS 2009/11/30 CHKD: 2009/12/03 APPR: JCOMERC I 2009/12/08 REV: C3 | DESCRIPTION | GENERAL TOLERANCES (UNLESS SPECIFIED) | | DIMENSION STYLE IN/MM | SCALE 2:1 | DESIGN UNITS INCH | THIRD ANGLE PROJECTION | | |
| | | 4 PLACES ± --- ± --- | 3 PLACES ± --- ± .010 | DRAWN BY | DATE | TITLE LPH VERTICAL RECEPTACLE POWER ASSEMBLY 2 CKT-14 CKT, PRESS-FIT (C3) | | | |
| | | 2 PLACES ± 0.25 ± --- | 1 PLACE ± --- ± --- | CHECKED BY | DATE | APPROVED BY JCOMERC I 2009/12/03 | | | |
| | | ANGULAR ± 1/2° | | MATERIAL NO. | | MOLEX MOLEX INCORPORATED | | | |
| | | DRAFT WHERE APPLICABLE MUST REMAIN WITHIN DIMENSIONS | | SEE CHART | | DOCUMENT NO. SD-46112-200 | | SHEET NO. 1 OF 2 | |

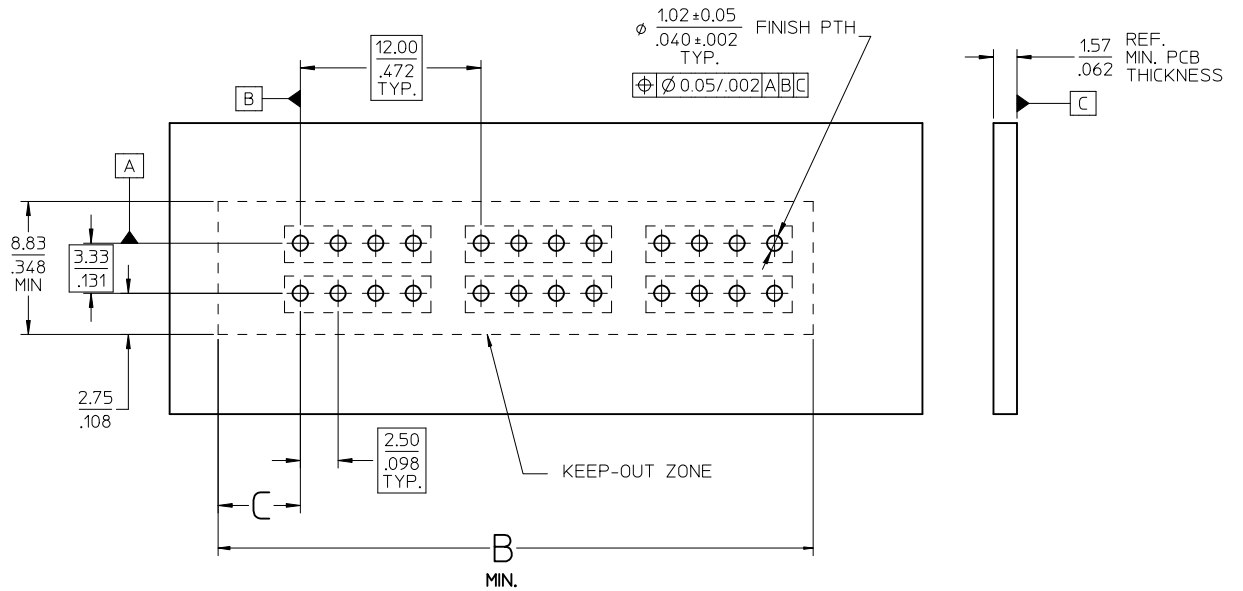
THIS DRAWING CONTAINS INFORMATION THAT IS PROPRIETARY TO MOLEX INCORPORATED AND SHOULD NOT BE USED WITHOUT WRITTEN PERMISSION



P/N 46112-601 SHOWN



PCB LAYOUT: COMPONENT SIDE
SCALE 4:1



PCB COMPONENT SIDE
SCALE 4:1

| | | | | | | | | | | | |
|------------------------------------------------------------------------------------------------------------------------------------|-------------|---------------------------------------|--|------------------------------------------------------------|------|--------------------------|-----------------------------|----------------------------------------------------------------------------------------|--|----------------------------------------------------------------------------------------------------------------------------------|--|
| SEE SHT 1 EC NO: UCP2010-1199 DRAWN:MKRADI/MAS 2009/11/30 CHKD: JCOMERC I 2009/12/03 APPR: JCOMERC I 2009/12/08 REV | DESCRIPTION | GENERAL TOLERANCES (UNLESS SPECIFIED) | | DIMENSION STYLE IN/MM | | SCALE 3:1 | DESIGN UNITS INCH | THIRD ANGLE PROJECTION | | | |
| | | | | mm | INCH | DRAWN BY | DATE | TITLE LPH VERTICAL RECEPTACLE POWER ASSEMBLY 2 CKT-14 CKT, PRESS-FIT | | | |
| | | 4 PLACES ± --- ± --- | | 3 PLACES ± --- ± .010 | | CHECKED BY | | DATE | | MOLEX INCORPORATED | |
| | | 2 PLACES ± 0.25 ± --- | | 1 PLACE ± --- ± --- | | APPROVED BY JCOMERC I | | DATE 2009/12/03 | | DOCUMENT NO. SD-46112-200 | |
| | | ANGULAR ± 1/2° | | DRAFT WHERE APPLICABLE MUST REMAIN WITHIN DIMENSIONS | | SEE CHART | | SHEET NO. 2 OF 2 | | THIS DRAWING CONTAINS INFORMATION THAT IS PROPRIETARY TO MOLEX INCORPORATED AND SHOULD NOT BE USED WITHOUT WRITTEN PERMISSION | |