

# SMT, CCFL Inverter Transformers

## Special Features

- Power rating: 6 watts
- Operating frequency: 60 KHz  $\pm$ 25 %
- Operating ambient temperature: 0 to +75 °C
- Storage temperature: -40 to +105 °C
- Dielectric withstanding voltage: 1500 Vrms
- Packaged: 250 pcs. per tape-and-reel

## Typical Applications

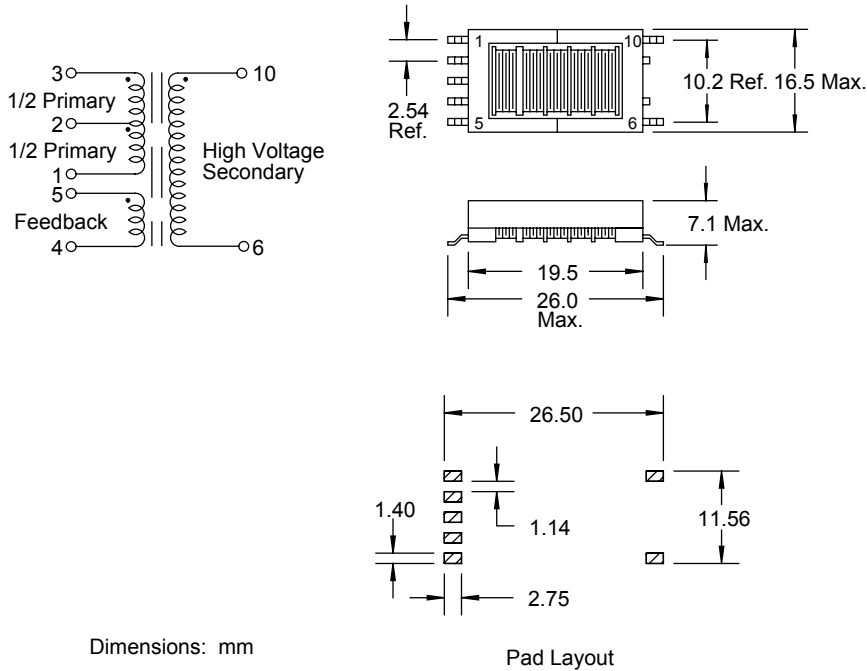
- LCD flat panel displays
- Notebook / palmtop computers
- Portable instruments
- Retail terminals

Consult engineering for inverter circuit related inductors selection.

† RoHS Directive 2002/95/EC Jan 27 2003 including Annex.

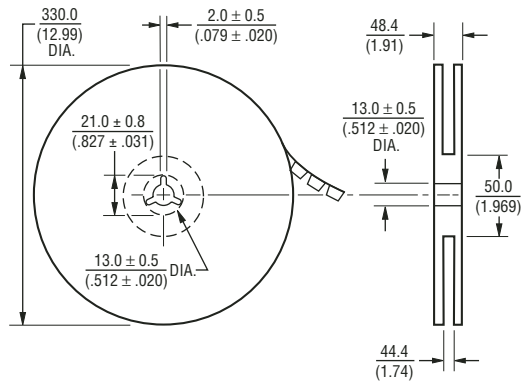
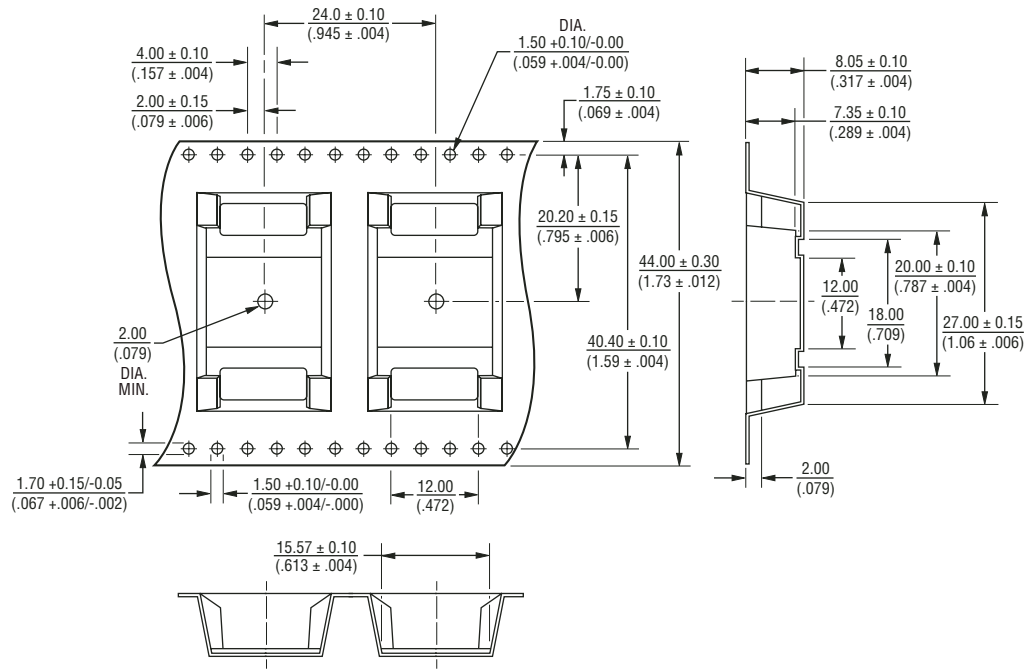
PM61300 Series							
Part Number	Primary			Secondary			Turns Ratio
	L ( $\mu$ H) $\pm$ 10 % @ 10 KHz	DCR $\Omega$ Max.	Voltage (V)	DCR $\Omega$ Max.	Voltage (V)	I <sub>rms</sub> (mA)	
PM61300-1-RC	44	0.61	25	132	1300	70	50
PM61300-2-RC	44	0.82	20	175	1300	70	67
PM61300-3-RC	27	1.10	15	175	1300	70	86
PM61300-4-RC	20	1.88	13	175	1300	70	100
PM61300-5-RC	20	2.34	10.5	290	1300	70	125

“-RC” suffix indicates RoHS compliance.



# SMT, CCFL Inverter Transformers

## Packaging Dimensions - mm/(in.)



**BOURNS®**

Tel. (877) 426-8767 • Fax (951) 781-5006

[www.bourns.com](http://www.bourns.com)