

Surface
SMT
Mount

.025" SQ SMT SOCKET SSM SERIES



Mates with:
TSW, MTSW, TST,
TSS, ZST, ZSS, DW,
EW, ZW, TSM



SPECIFICATIONS

For complete specifications and recommended PCB layouts see www.samtec.com?SSM

Insulator Material:
Black Liquid Crystal Polymer



Contact Material:
Phosphor Bronze



Plating: Au, PdNi or Sn over 50µ" (1,27µm) Ni

Current Rating:

3A @ 80°C ambient (-DV/-SV mated with TSM-DV)
4A @ 80°C ambient (-DH/-SH mated with TSW-D)

Voltage Rating:

475 VAC (-SV/-DV mated with TSW)
450 VAC (-SH/-DH mated with TSM)

Operating Temp Range:

-55°C to +125°C with Gold
-55°C to +105°C with Tin

Contact Resistance:

10 mΩ max

Insertion Depth:

SV/DV is (4,34mm) .171" to (7,24mm) .285" or pass-through from top; (5,56mm) .219" plus board thickness minimum from bottom; SH/DH is (4,34mm) .171" to (6,35mm) .250"

Insertion Force:

(Single contact only)

5oz (1,39N) average

Normal Force:

125 grams (1,21N) average

Withdrawal Force:

(Single contact only)

2oz (0,56N) average

RoHS Compliant:

Yes

Processing:

Max Processing Temp:

230°C for 60 seconds, or

260°C for 20 seconds 3x

Lead-Free Solderable:

Yes

-DH Coplanarity:

Less than 28 positions

(0,15mm) .006" max

More than 27 positions

(0,20mm) .008" max

-SH, -SV, -DV Coplanarity:

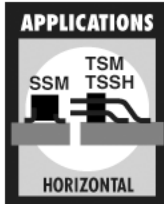
(0,15mm) .006" max

02 thru 36
(-SV, -SH, -DH)

02 thru 40
(-DV)

APPLICATION SPECIFIC OPTION

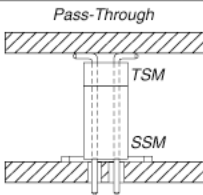
Alignment Pin available.
Call Samtec.



-L
= 10µ" (0,25µm) Gold on contact,
Matte Tin on tail

-S
= 30µ" (0,76µm) Gold on contact,
Matte Tin on tail

APPLICATION



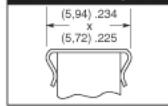
-BE
= Bottom Entry
(-DV & -SV only)

-LC
= Locking Clip
(-DV & -SV only)
Contact Samtec for
-DH & -SH

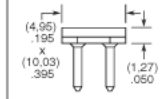
-K
= (6,50mm) .256" DIA
Polyimide film
Pick & Place Pad
(5 positions min.)
-DV & -SV only

-“XXX”
= Polarized Position
(-BE not available)

-M
= Metal Pick & Place Pad
(5 positions min.)
-DV only

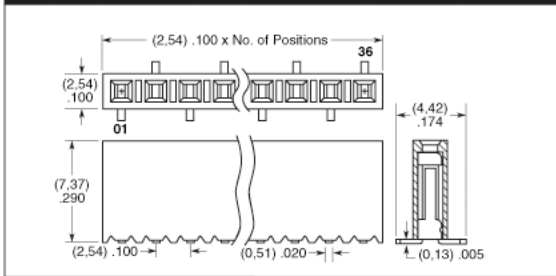


-P
= Plastic Pick & Place Pad
(-DV & -SV only)
(5 pos. minimum)

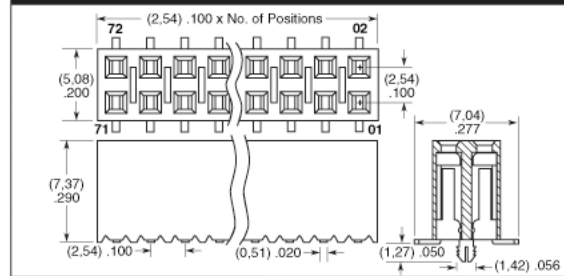


-TR
= Tape & Reel Packaging
(29 positions max.)

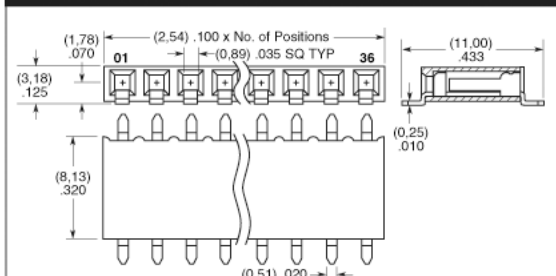
-SV
= Single Row Vertical Pin



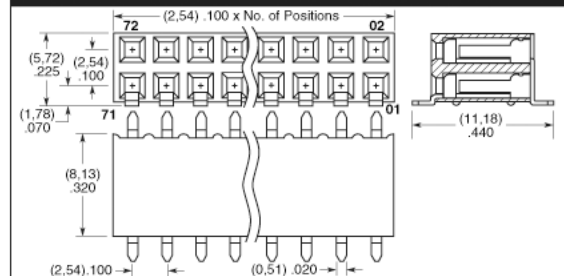
-DV
= Double Row Vertical Pin



-SH
= Single Row Horizontal Pin



-DH
= Double Row Horizontal Pin



Note: Some lengths, styles and options are non-standard, non-returnable.

Due to technical progress, all designs, specifications and components are subject to change without notice.

WWW.SAMTEC.COM

SAMTEC USA • Tel: 1-800-SAMTEC-9 or 812-944-6733 • Fax: 812-948-5047
 SAMTEC GERMANY • Tel: +49 (0) 89 / 89460-0 • Fax: +49 (0) 89 / 89460-299
 SAMTEC SCANDINAVIA • Tel: +46-84477280 • Fax: +46-87420413
 SAMTEC ASIA PACIFIC • Tel: 65 6745-5955 • Fax: 65 6841-1502
 SAMTEC HONG KONG • Tel: 852-26904858 • Fax: 852-26904842
 SAMTEC SILICON VALLEY • Tel: 408-395-5900 • Fax: 408-395-1520
 SAMTEC FRANCE • Tel: 01 60 95 06 60 • Fax: 01 60 95 06 61
 SAMTEC ISRAEL • Tel: 972-3-7526600 • Fax: 972-3-7526690
 SAMTEC CHINA • Tel: 86-21-61103766 • Fax: 86-21-53854047
 SAMTEC SOUTH AFRICA • Tel: 27 11 4528112 • Fax: 27 86 6714432
 SAMTEC UK • Tel: 01236 739292 • Fax: 01236 727113
 SAMTEC ITALY • Tel: 39 039 6890337 • Fax: 39 039 6890315
 SAMTEC INDIA • Tel: 91 80 306 21 612 • Fax: 91 80 4152 8187
 SAMTEC TAIWAN • Tel: 886 02 2698-3367 • Fax: 886 02 8698-2159
 SAMTEC ANZ • Tel: 613 9512 7747 • Fax: 613 9512 7745