

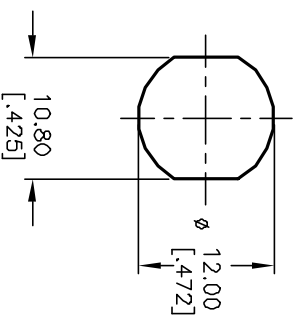
CIRCUIT: SPST
CONTACT CONFIGURATION

SWITCH FUNCTION	POS 1	POS 2
POS 1	↖	→
DEF		(DN)

LEGEND

- = OFF POSITION
- = INDICATES KEY PULL
- X = INDICATES NO KEY PULL
- () = MOMENTARY

RECOMMENDED PANEL CUTOUT



NOTES:

1. ALL DIMENSIONS IN MM
2. GENERAL TOLERANCE: X, X.X=±0.4
X.XX=±0.25
3. TERM. NOS. FOR REFERENCE ONLY.
4. RATING: 1A @125VAC, 0.5A @250VAC
5. CONTACT RESISTANCE: 10mILLI-OHMS
6. DIELECTRIC STRENGTH: 1000 VAC-1Minute
7. MATERIALS:
HOUSING: ZINC ALLOY DIE CAST
CYLINDER: ZINC ALLOY W/CHROME PLATING
TERMINAL AND CONTACTS: SILVER PLATED
KEYS (2) KEY CODE 845: ZINC ALLOY, CHROME PLATING

REV.	ECN NO.	DESCRIPTION	DATE	CHKD
C	13056	DESC WAS K0133C-845	4/17/03	AR
B	12767	DESC WAS K0133E-845	1/27/03	CJB
A	11735	RELEASED FOR PRODUCTION	10/12/01	CJB
		DESCRIPTION		

THE INFORMATION CONTAINED IN THIS DOCUMENT IS PROPRIETARY TO E-SWITCH AND IS NOT TO BE COPIED OR TRANSMITTED

TITLE		SCALE		DATE		DR		DWG		REV	
K0133E-845		1.5:1		10/12/01		CJB		K400110		C	
E-SWITCH®											