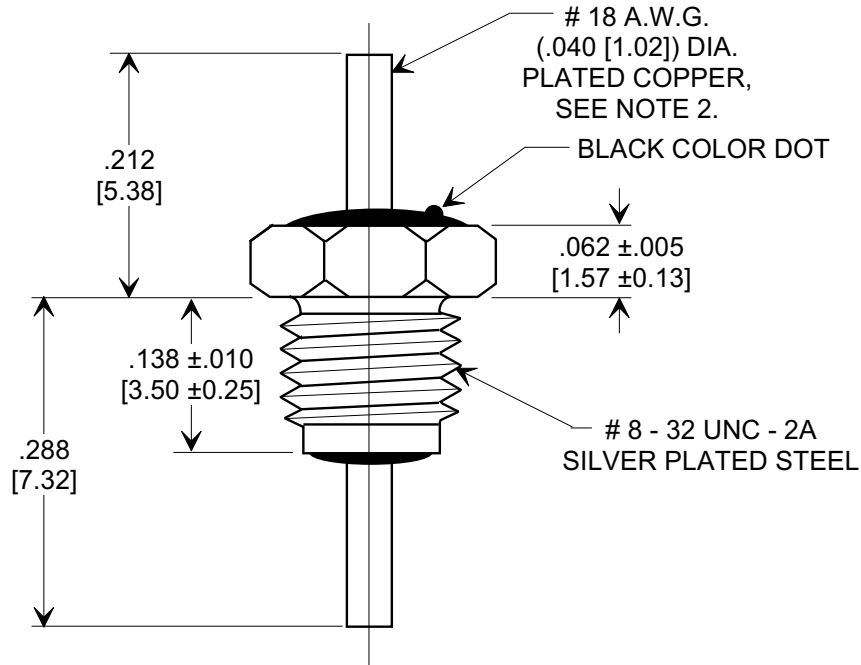
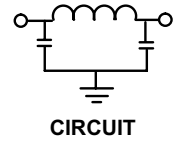
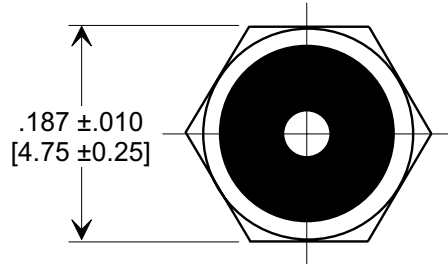
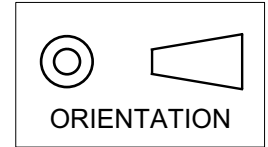


MARKETING SALES DRAWING
DIMENSIONS IN INCHES - DO NOT SCALE THIS DRAWING
DIMENSIONS IN METRIC - []

Electrical Testing
per Tusonix standard
test plans and Mil-Std-202
Test Methods.



NOTES:

- TUSONIX STANDARD PART NUMBER: 4205-0005.
TUSONIX RoHS COMPLIANT PART NUMBER: 4205-005 LF.
CUSTOMER MUST SPECIFY STANDARD OR RoHS PART NUMBER WHEN ORDERING.
- LEAD FINISH: STANDARD PART #: 60/40 SOLDER PLATED COPPER. RoHS PART #: SILVER PLATED COPPER.
- PART MARKING: TRADEMARK AND VARIATION NUMBER ON HEX FLATS.
STANDARD PART: BLACK INK. RoHS PART: GREEN INK.
- MAXIMUM MOUNTING TORQUE WITHOUT HARDWARE 2.5 lb.-in. [.282 N-m].

MIN. CAP. (pF)	WORKING VOLTAGE (VVdc)		CURRENT Idc	I.R. MIN. @ 100 (VDC)	DWV (VDC)	MINIMUM NO LOAD INSERTION LOSS (dB) AT 25°C PER MIL-STD-220			
	85° C	125° C				10 MHz	100 MHz	1 GHz	10 GHz
1500	250	125	15	10 G Ω	500	5	35	60	60

X-2015 Rev-0	REVISION RECORD		Original Release C.O. 19990409-2-01 ADDED METRIC TO HEADING. S.M. 10-11-01 20011005-5-06 ADDED IR & DWV, ADDED & REVISED NOTES. S.M.11-30-05 20051102-4-05	--TOLERANCES-- Unless Otherwise Specified		Title BUSHING STYLE EMI FILTER		
	0			DECIMAL ± .031 [.79]	Drawn S.M. 04-14-99		Scale 6 X	
				ANGLES ±	Approved J.Mc. 04-14-99			
				TUSONIX TUCSON, ARIZONA	A	4205-005		