

IEC Appliance Inlet C14 with Fuseholder 1-pole

Types 6200, 6205

Types 6200, 6205



1-pole

Type 6202: for protection class II

1-pole



**Description**

- Panel Mount:  
Screw-on version from front or rear side, snap-in version from front side
- 2 Functions:  
Appliance Inlet Protection class I, Fuseholder for fuse-links 5 x 20 mm 1-pole
- Solder terminals or quick connect terminals

**Approvals**

- VDE License Number: 40011091
- UL License Number: E93617
- CSA License Number: 38456

**Characteristics**

- Unwired
- Plug removal necessary for fuse-link replacement  
The fuseholder is accessible from the equipment front  
With spare fuse compartment
- Qualified for use in equipment according IEC/EN 60950

**Other versions on request**

- Types for rivet mounting available upon request

**References**

[General Product Information](#)

**Weblinks**

[Approvals](#), [RoHS](#), [CHINA-RoHS](#), [Mating Connectors](#), [e-Store](#), [Distributor-Stock-Check](#), [Accessories](#)

**Technical Data**

|                           |  |
|---------------------------|--|
| Ratings IEC               | 10 A / 250 VAC; 50 Hz  |
| Ratings UL/CSA            | 10 A / 250 VAC; 60 Hz  |
| Dielectric Strength       | > 2 kVAC between L-N<br>> 2 kVAC between L/N-PE<br>(1 min/50 Hz)                 |
| Allowable Operation Temp. | -25 °C to 70 °C  |
| Degree of Protection      | from front side IP 40 acc. to IEC 60529  |
| Protection Class          | Suitable for appliances with protection class 1 acc. to IEC 61140                |
| Terminal                  | Solder terminals or quick connect terminals, tin-plated                          |
| Panel Thickness s         | Screw: max 6 mm<br>Mounting screw torque max 0.5 Nm<br>Snap-in: 1/1.5/2/2.5/3 mm |
| Material: Housing         | Thermoplastic, black, UL 94V-0   |

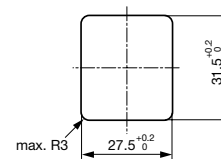
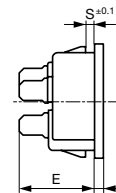
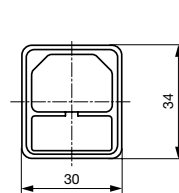
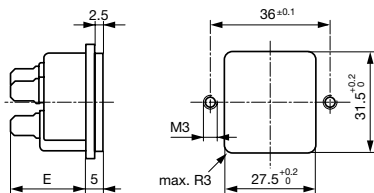
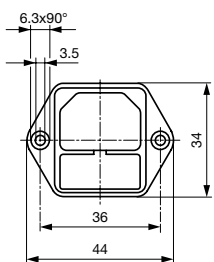
|                                   |   |
|-----------------------------------|---|
| Appliance Inlet                   | C14 acc. to IEC/EN 60320-1, UL 498, CSA C22.2 no. 42 (for cold conditions) pin-temperature 70 °C, 10A, Protection Class 1 |
| Fuseholder                        | 1-pole, Shocksafe category PC2 acc. to IEC 60127-6, for fuse-links 5 x 20 mm  |
| Rated Power Acceptance @ Ta 23 °C | 5 x 20: 2 W (1 pole)  |
| Power Acceptance @ Ta > 23 °C     | Admissible power acceptance at higher ambient temperature see derating curves   |

**Dimensions**

Screw-on mounting types 6200/05

44 mm

Snap-in mounting types 6200/05

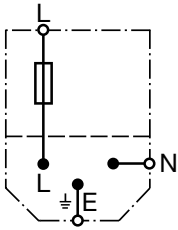


E: Solder terminals 20.5 mm  
E: Quick connect terminals 23.5 mm

E: solder terminals 22.5 mm  
E: quick-connect terminals 25.5 mm  
S: 1.0/1.5/2.0/2.5/3.0 mm

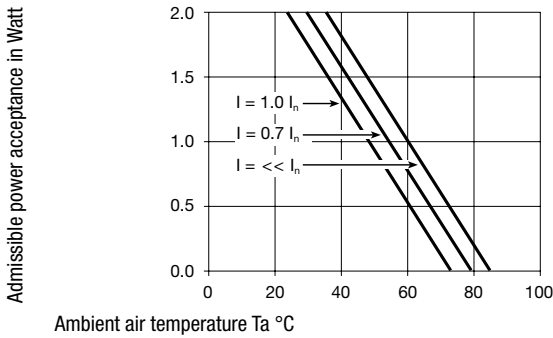
## Diagrams

6200/05

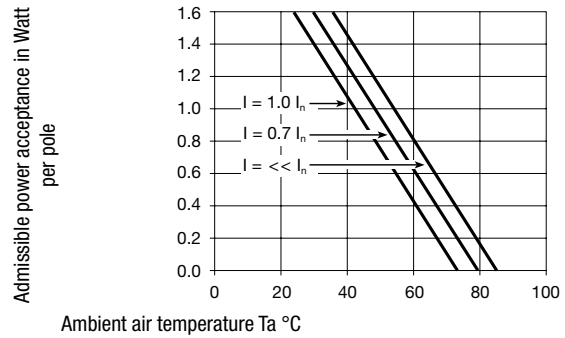


## Derating Curves

1-pole



2-pole



## Variants

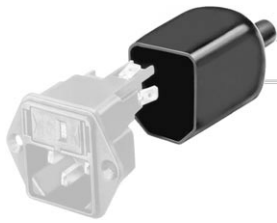
Socket and fuse-carrier included

| Protection Class | Panel mounting | Panel Thickness s [mm] | Fuseholder | Terminal                             | Internally wired | Order Number |
|------------------|----------------|------------------------|------------|--------------------------------------|------------------|--------------|
| 1                | Screw          | -                      | 1-pole     | Quick connect terminals 4.8 x 0.8 mm |                  | 6205.2200    |
| 1                | Screw          | -                      | 1-pole     | Quick connect terminals 6.3 x 0.8 mm |                  | 6205.2300    |
| 1                | Screw          | -                      | 1-pole     | Solder terminals                     |                  | 6205.2100    |
| 1                | Snap-in        | 1.5                    | 1-pole     | Quick connect terminals 4.8 x 0.8 mm |                  | 6205.4215    |
| 1                | Snap-in        | 2                      | 1-pole     | Quick connect terminals 4.8 x 0.8 mm |                  | 6205.4220    |
| 1                | Snap-in        | 3                      | 1-pole     | Quick connect terminals 4.8 x 0.8 mm |                  | 6205.4230    |
| 1                | Snap-in        | 1                      | 1-pole     | Quick connect terminals 6.3 x 0.8 mm |                  | 6205.4310    |
| 1                | Snap-in        | 2                      | 1-pole     | Quick connect terminals 6.3 x 0.8 mm |                  | 6205.4320    |
| 1                | Snap-in        | 3                      | 1-pole     | Quick connect terminals 6.3 x 0.8 mm |                  | 6205.4330    |
| 1                | Snap-in        | 1                      | 1-pole     | Solder terminals                     |                  | 6205.4110    |
| 1                | Snap-in        | 1                      | 1-pole     | Solder terminals                     |                  | 6205.4210    |
| 1                | Snap-in        | 1.5                    | 1-pole     | Solder terminals                     |                  | 6205.4115    |
| 1                | Snap-in        | 1.5                    | 1-pole     | Solder terminals                     |                  | 6205.4315    |
| 1                | Snap-in        | 2                      | 1-pole     | Solder terminals                     |                  | 6205.4120    |
| 1                | Snap-in        | 2.5                    | 1-pole     | Solder terminals                     |                  | 6205.4125    |
| 1                | Snap-in        | 2.5                    | 1-pole     | Solder terminals                     |                  | 6205.4225    |
| 1                | Snap-in        | 2.5                    | 1-pole     | Solder terminals                     |                  | 6205.4325    |
| 1                | Snap-in        | 3                      | 1-pole     | Solder terminals                     |                  | 6205.4130    |

Packaging unit 50 Pcs

Accessories

Description



Assorted Covers  
Rear Cover

|  |           |
|--|-----------|
|  | 0859.0047 |
|  | 4311.9403 |

Mating Outlets/Connectors

Category / Description

Appliance Outlet Overview complete



|   |      |
|---|------|
| IEC Appliance Outlet F, Screw-on Mounting, Front Side, Solder or Quick-connect Terminal           | 4787 |
| IEC Appliance Outlet F, Snap-in Mounting, Front Side, Solder or Quick-connect Terminal            | 4788 |
| IEC Appliance Outlet F or H, Screw-on Mounting, Front Side, Solder, PCB or Quick-connect Terminal | 5091 |
| IEC Appliance Outlet F or H, Screw-on Mounting, Front Side, Solder or Quick-connect Terminal      | 5092 |

[Appliance Outlet further types to 6205](#)

Connector Overview complete



|  |        |
|--|--------|
| IEC Connector C15, Rewireable, Straight  | 0101   |
| IEC Connector C15A, Rewireable, Straight | 0102   |
| IEC Connector C15A, Rewireable, Straight | 0102-G |
| IEC Connector C15A, Rewireable, Angled   | 0112   |
| IEC Connector C13, Rewireable, Angled    | 4012   |

[Connector further types to 6205](#)

Power Cord Overview complete



|   |      |
|---|------|
| Power Cord with IEC Connector C13, Angled | 0311 |
| Power Cord with IEC Connector C13, Angled | 3011 |
| Power Cord with IEC Connector C13, Angled | 3012 |
| Power Cord with IEC Connector C13, Angled | 3013 |
| Power Cord with IEC Connector C13         | 3020 |

[Power Cord further types to 6205](#)