

Clamp Filters For Cable(Sleeve Core Type)

Conformity to RoHS Directive

ZCAT-E Series

The ZCAT-E series which is mold-free type(resin moldingless) differs from the traditional ZCAT series in that it is mounted at the harness assembly stage. It possesses a new housing structure that can be secured simply following the penetration of the harness making it possible to function with series that feature other applicable harness line diameters. Regarding member configurations, drastic cost reductions can be realized due to the fact that only 1 sleeve core is needed per case and that polishing work is not required for core contact surfaces.

FEATURES

- It is possible to replace this product with sleeve cores that have been installed in singular molds of harness manufacturers.
- TDK original case housing structure makes it possible to perform, with one touch, installation and securement following cable insertion.
- A simplification of the manufacturing process has brought about weight reduction, making it possible to offer provision at lower costs.
- High efficiency with small volume.
- Classified disposal is made possible with structural design that allows for simple separation of the case(core cover) and the core.
- It is possible to reduce the load on the environment using reusable plastic cases(scraped material recycling). (For the product with recyclable material, symbol -F is added to the part number.)
- Usage of styrene foam has been eliminated by employing paper wrapping material in the internal design.

APPLICATIONS

Noise countermeasures for the signals and power sources for all types of electronic equipment(OA, HE, FA equipment)

SPECIFICATIONS

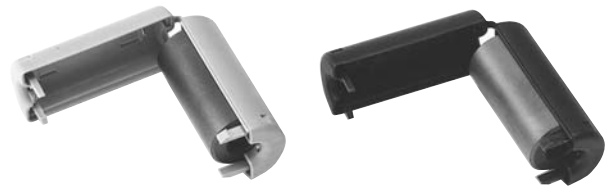
Part No.	ZCAT1736-0630E	ZCAT1229-0530E-F
Impedance	80Ω min. [10 to 100MHz] 150Ω min. [100 to 500MHz]	40Ω min. [10 to 100MHz] 110Ω min. [100 to 500MHz]

Operating temperature range	-40 to +85°C
Temperature range for engagement work	0 to +50°C
Operating humidity range	10 to 95(%)RH [Maximum wet-bulb temperature: 38.5°C]

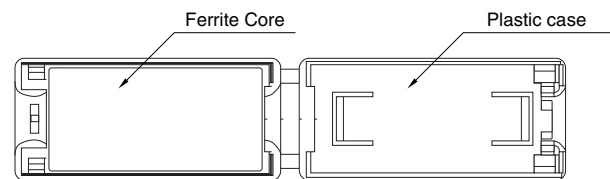
- Test conditions
Impedance meter or equivalent/ø1mm solder plated copper wire passes through(1ts)/Unloaded

PACKAGING STYLE AND QUANTITIES

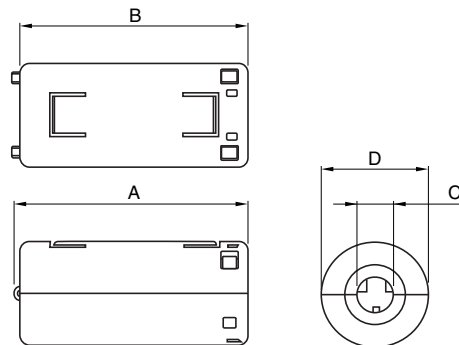
Type	Quantity
ZCAT1229	1000
ZCAT1736	600



INTERNAL CONSTRUCTION



SHAPES AND DIMENSIONS



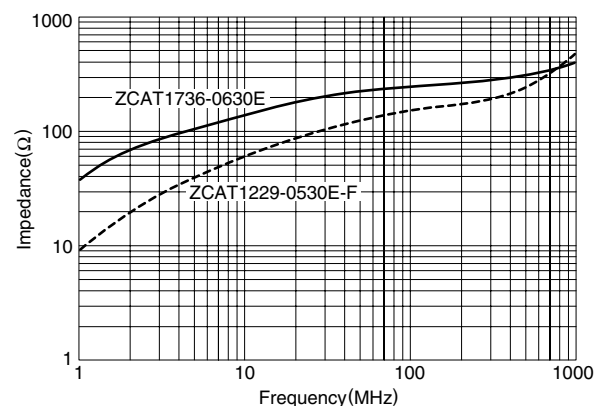
Dimensions in mm

Part No.	A	B	C	D	Applicable cable outer dia.	Weight
ZCAT1229-0530E-F	30.1	29±1	5±1	12.3±1	ø4 to 5	7g
ZCAT1736-0630E	36.7	35.6±1	6±1	16.8±1	ø5 to 6	21g

CASE COLOR SYMBOL(added to the end of part no.)

Gray	None
Black	-BK

TYPICAL ELECTRICAL CHARACTERISTICS IMPEDANCE vs. FREQUENCY CHARACTERISTICS



- Conformity to RoHS Directive: This means that, in conformity with EU Directive 2002/95/EC, lead, cadmium, mercury, hexavalent chromium, and specific bromine-based flame retardants, PBB and PBDE, have not been used, except for exempted applications.

- All specifications are subject to change without notice.