

BK3 BANDSAW 12" THROAT CAPACITY 3" DEPTH OF CUT

For the woodworking professional, there is no substitute for the reliability, efficiency and durability of the Record Power BK3 bandsaw. Capable of rip and cross cutting with unwavering accuracies on hard and soft woods, chipboard, plywoods, plastics and perspex. Lightweight and portable with a sturdy and strengthened die-cast frame. The BK3 is now available in 230v and 110v, therefore ideally suited for the site or workshop.



NOW AVAILABLE -
2nd SPEED KIT
FOR METAL
CUTTING

Blade
tension
adjustment.



Accuracy
guaranteed.

Adjustable blade
guides ensure
constant
accuracy.

Powerful
120W
motor.

Five blade
options for all
materials.

Large throat
depth gives a
12" x 3" cutting
capacity.

3" Depth of cut

12" Throat capacity

Table tilts 0-45°

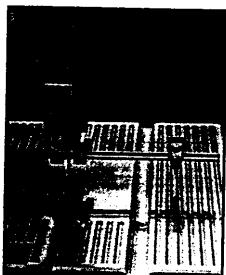
Blade
guide
height
adjustment.

Locating holes
for permanent fixing.

Rugged die
cast frame
construction.

BANDSAW

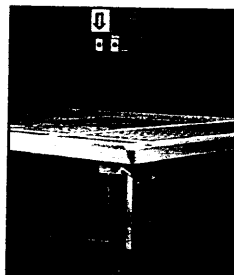
Conversion Kit



Circle Cutting
For circle
cutting objects
such as
wheels, bowl
blanks for
woodturning,
and clock
parts.



Jigsaw
Allows for the
facility of
internal or
external cuts
in heavier
materials.



Fretsaw
For delicate
curved
work.

Record Power BK3 Specification Chart

Model No.	Ref. No.	Throat Width	Cut Height	Table Size	Motor Output	Blade Width	Cutting Speeds	Weight	Table Tilt	Height	Depth	Width
BK3 230v	7607006	12" 304.8mm	3" or 72mm	14" x 12" 355.6 x 305mm	120w	1/4" - 3/8" 6 - 9mm	396m/min 1300ft/min Optional 2nd speed see Acc No. 7500000	32lbs 15kg	0-45°	22" 559mm	12 1/2" 320mm	23 1/2" 595mm
BK3 110v	7607013											

RECORDED POWER

SHEFFIELD - ENGLAND

BK3 BANDSAW

FEATURES

- In comparison to a 2 wheeled bandsaw, the BK3 has a greater throat depth giving an impressive 12" x 3" cutting capacity enabling much larger workpieces to be cut.
- The blade can be easily adjusted to the optimum tension to suit the material being cut.
- The use of 3 adjustable blade guides both above and below the table surface, in addition to vertical and horizontal blade tracking ensures consistent accuracy at the point of contact between the blade and workpiece, thus creating a smooth, clean finish.
- Five types and sizes of blades are readily available to suit the BK3, to work on a wide variety of industrial and workshop materials.
- Mitres, bevels and thus compound mitres can be machined using the standard table tilt from 0-45° degrees and the optional mitre fence.
- Blade guide height adjustment means the guide can be positioned as close to the workpiece as possible regardless of the angle of the table. This ensures consistent accuracy at the point of control between the blade and workpiece.
- The rugged die cast frame construction is cushioned with a non-slip rubber strip for stability.
- Locating holes for permanent fixing.
- The powerful 120W British motor is further enhanced by fan cooling and capacitor start creating a vibration free and extremely low noise workshop environment, critical on long production runs or when in constant usage.

BK3 Accessories Include:

- 7500000 - 2nd Speed Kit - Metal Cutting
- 7600045 - BK3 Conversion Kit
- 7600038 - Circle / Fence Attachment
- 7600076 - Rip Fence
- 7600069 - Cross Cut / Mitre Fence
- 7600663 - Wheel Kit
- 7600670 - Belt Kit
- 7600694 - Blade Guide Kit
- 7600687 - Track Assembly Kit.

BK3 Conversion Kit

With the addition of the BK3 conversion kit, the already versatile BK3 bandsaw is converted into a three-in-one fretsaw, jigsaw and circle cutting saw. Ideal for model making, toy making, picture framing and many other hobby and professional purposes. The fretsaw, jigsaw and circle cutting fence attachment can all be fitted and working in a matter of minutes.

BK3 Conversion Kit Specification Chart

Conversion Kit	Depth of Cut	Length of Stroke	Strokes per Min.	Blades Supplied	Cutting Capacity
Fretsaw	32mm 1.25"	15mm (0.6")	1440	3 x 2mm	-
Jigsaw	32mm 1.25"	15mm (0.6")	1440	1 Universal	-
Circle/Fence	-	-	-	-	50-250mm

BK3 BANDSAW BLADES

Manufactured from high carbon steel, each blade is hardened and tempered at the tooth edge for long life. The flexible back of the blade allows for the absorption of heavy cutting stresses. Electronic flash butt welding enables the blade to be joined end to end rather than overlapped thus ensuring that there is a constant thickness throughout the blade (See Fig1). Finally each batch of blades are curvature tested to BS 3877.



Fig 1.



Cat No.	Blade width	Teeth per Inch	Usage
7701018	1/4	10	For wood cutting - curves
7701056	3/8	6	For wood cutting - straight cuts
7701025	1/4	14	For general cutting of wood, metal, plastic and non-ferrous
7701032	1/4	24	For metal cutting from 1.22mm to 1.62mm thickness
7701049	1/4	32	For metal cutting from 0.27mm to 1.42mm thickness