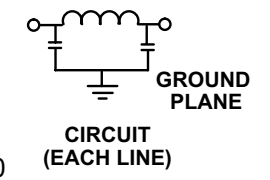
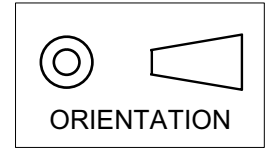
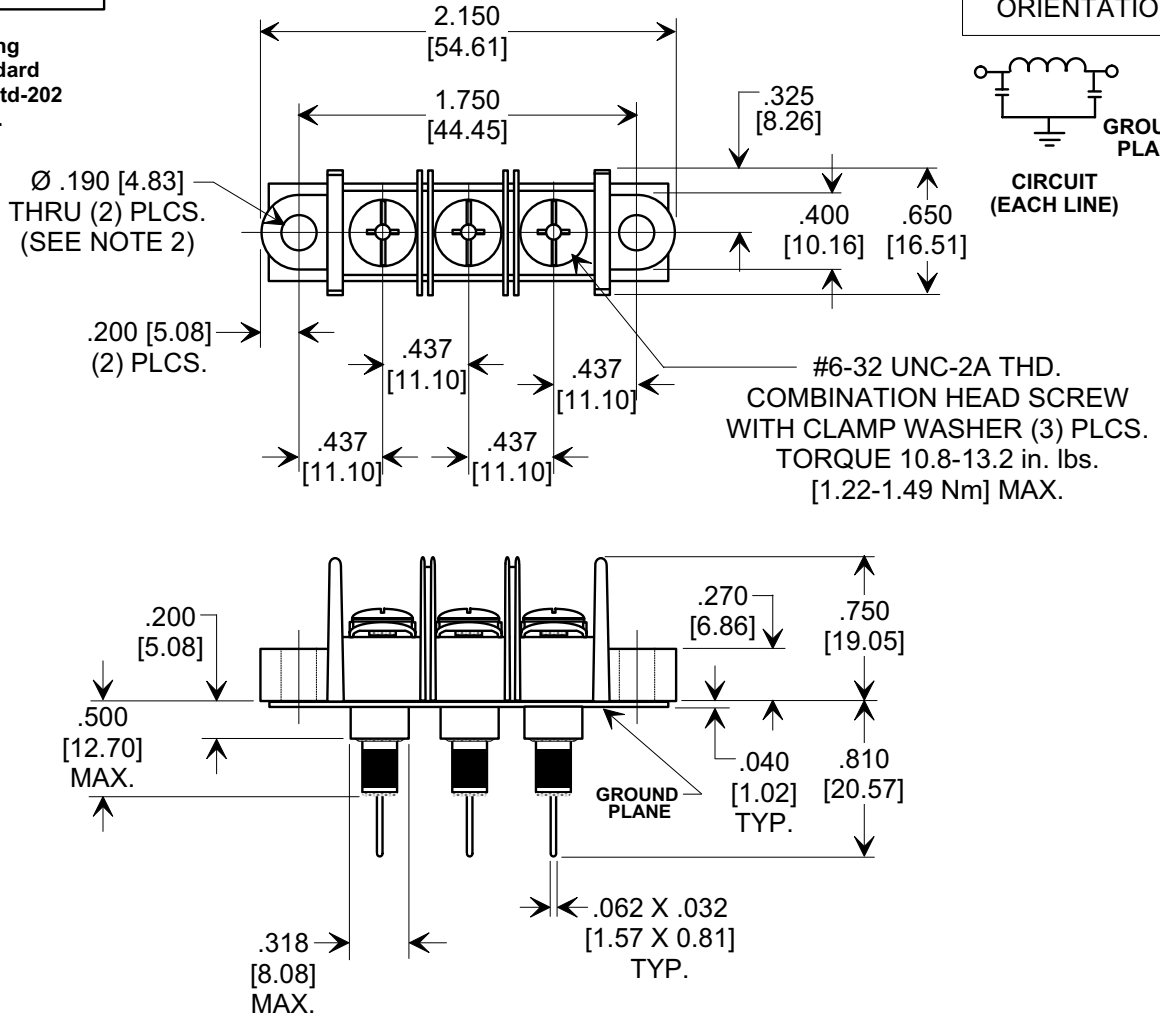


This drawing is the property of Tusonix, Inc., and may not be used, reproduced, published or disclosed to others without expressed authorization by Tusonix Inc.

MARKETING SALES DRAWING
 DIMENSIONS IN INCHES - DO NOT SCALE THIS DRAWING
 DIMENSIONS IN METRIC - []



Electrical Testing
 per Tusonix standard
 test plans and Mil-Std-202
 Test Methods.



NOTES:

- TUSONIX STANDARD PART NUMBER: 7603-007.
 TUSONIX RoHS COMPLIANT PART NUMBER: 7603-007 LF.
 CUSTOMER MUST SPECIFY STANDARD OR RoHS PART NUMBER WHEN ORDERING.
- LEAD FINISH: MATTE TIN.
- PLATE MATERIAL: COPPER ALLOY, MATTE TIN FINISH.
- PART MARKING: PART NUMBER, DATE CODE AND UL RECOGNITION WHITE INK.
 RoHS PART: GREEN INK DOT ON TOP OF GROUND PLATE.
- MAX. SOLDERING TEMPERATURE 500°F [260°C].
- BLOCK MOUNTING: RECOMMENDED MOUNTING SCREW (#8 PAM HEAD) TORQUE 4.5-6.5 in. lbs. [0.51-0.62 Nm] MAX.
- MOLDED MATERIAL: HIGH TEMPERATURE (PBT), UL RATED 94 V-O.

Cx (pF)	WORKING VOLTAGE -40°C TO +105°C	I _{DC}	I.R. MIN. @ 100 (VDC.)	DWV (VDC)	TYPICAL NO LOAD INSERTION LOSS (dB) @ 25°C PER MIL-STD-220			
					10 MHz	100 MHz	1 GHz	10 GHz
2000 MIN.	250 VAC	20 Amps	10 G Ω	900	5	50	60	65

REVISION RECORD	Original Release	IR, DWV & PROJECTION ADDED. REVISED NOTE 2 & 3. S. M. 07-13-04	ADDED AND REVISED NOTES. REVISED ORQVE. S. M. 01-25-06	2	TOLERANCES unless otherwise specified	Title FILTERED TERMINAL BLOCK 3 POSITION
	2000127-1-02				2 PLC. DECIMAL ± N/A	
	20040630-1-06				3 PLC. DECIMAL ± .030 [0.76]	
	20060109-9-02				ANGLES ± N/A	
WAS SK 7665-002. SM 01-28-00	2000127-1-02	S. M. 01-25-06	2	2	ANGLES ± N/A	Drawn S.M. 01-04-00 Scale FULL
Original Release	2000127-1-02				TUSONIX TUCSON, ARIZONA	Approved J.Mc. 01-04-00
WAS SK 7665-002. SM 01-28-00	2000127-1-02					A