

# Customer Information Sheet

DRAWING No.: M80-718XXX

SHEET 2 OF 2

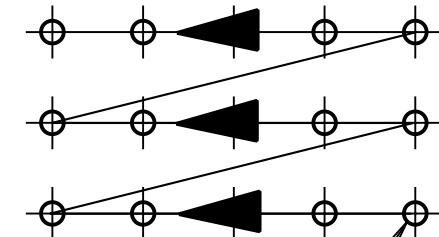
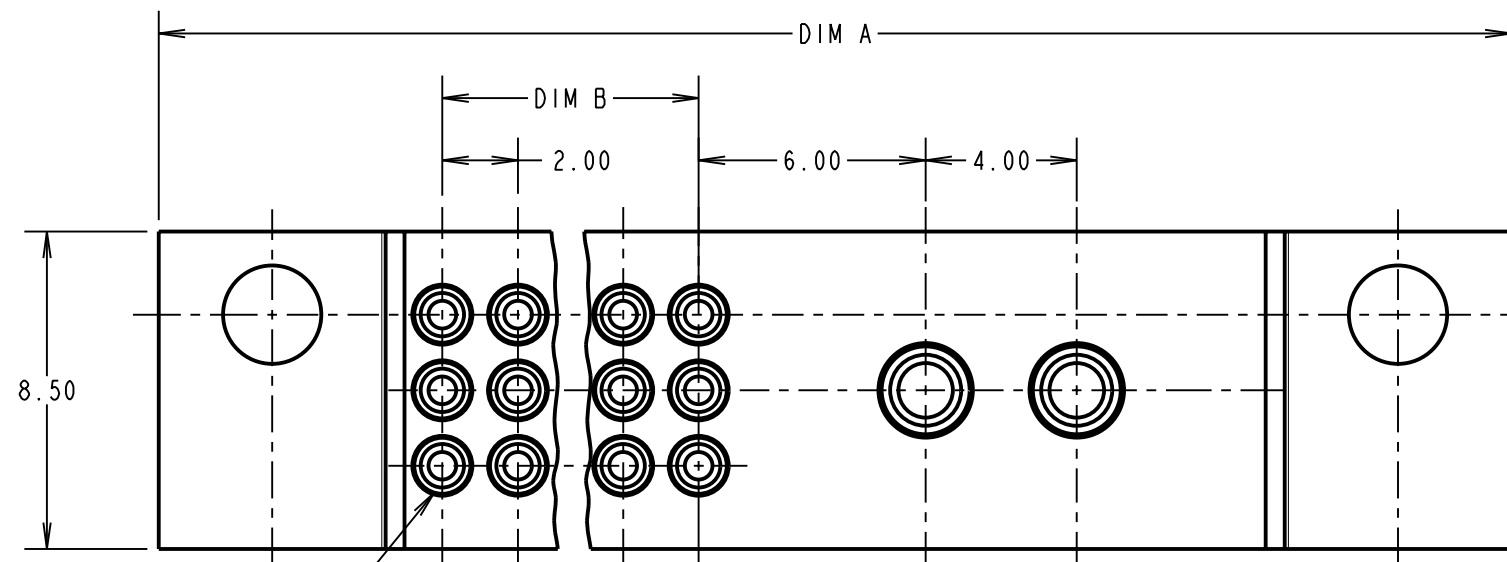
IF IN DOUBT - ASK

(C)

NOT TO SCALE

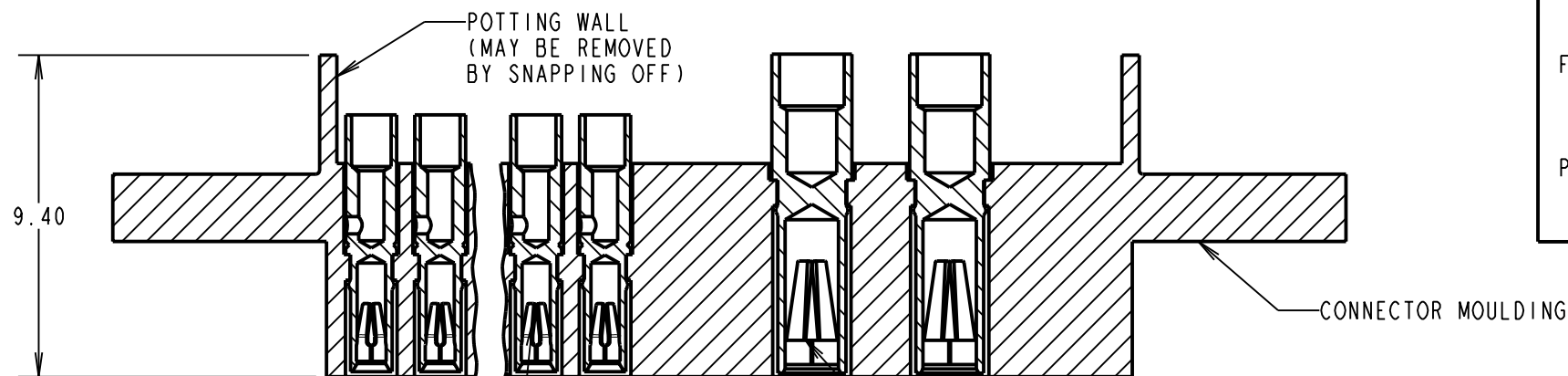
THIRD ANGLE PROJECTION

ALL DIMENSIONS IN mm



No. 1 CONTACT  
(SEE NOTE 1)

No. 1 CONTACT  
(SEE NOTE 1)



SIGNAL CRIMP CONTACT (24-28 AWG)

ORDER CODE: **M80-718XXX**

TOTAL No. OF SIGNAL CONTACTS: \_\_\_\_\_  
6, 15, 24, 30, 42

FINISH: \_\_\_\_\_  
05 = GOLD SHELL, GOLD CLIP  
42 = 100% TIN SHELL, GOLD CLIP

POTTING WALLS: \_\_\_\_\_  
BLANK = POTTING WALLS REMOVED  
A = POTTING WALLS RETAINED

**SPECIFICATION:**  
**MATERIAL:**  
 MOULDING: POLYAMIDE 46 UL94V-0, BLACK  
 SIGNAL CONTACT:  
 SHELL = BRASS  
 CLIP = BERYLLIUM COPPER  
 POWER CONTACT:  
 SHELL = BRASS  
 CLIP = BERYLLIUM COPPER  
**FINISH:**  
 SIGNAL CONTACT:  
 05 = 0.25-0.3µ GOLD SHELL, 0.3µ GOLD CLIP  
 42 = 3.5-5.0µ 100% TIN SHELL, 0.3µ GOLD CLIP  
 POWER CONTACT:  
 01 = 0.5µ 100% TIN SHELL, 0.15µ GOLD CLIP  
 05 = 0.28µ GOLD SHELL, 0.15µ GOLD CLIP  
**ELECTRICAL:**  
 CURRENT RATING AT 25°C = 3.0A MAX  
 CURRENT RATING AT 85°C = 2.2A MAX  
 WORKING VOLTAGE = 120V AC/DC  
 VOLTAGE PROOF = 360V AC/DC  
 CONTACT RESISTANCE = 25 MILLIOHMS MAX  
 INSULATION RESISTANCE = 100 MEGOHMS MIN  
**MECHANICAL:**  
 INSERTION FORCE (∅0.5mm GAUGE) = 2.8N MAX  
 WITHDRAWAL FORCE (∅0.5mm GAUGE) = 0.2N MIN  
 DURABILITY = 500 OPERATIONS  
**ENVIRONMENTAL:**  
 OPERATING TEMPERATURE = -55°C TO +125°C  
 FOR COMPLETE SPECIFICATION, SEE COMPONENT SPECIFICATION C005XX (LATEST ISSUE)

POWER CRIMP CONTACT (18-20 AWG)

No. OF WAYS	DIM "A"	DIM "B"
6 + 2	31.1	16.0
15 + 2	37.1	22.0
24 + 2	43.1	28.0
30 + 2	47.1	32.0
42 + 2	55.1	40.0

**NOTES:**

- FROM No. 1 POSITION, CONTACTS NUMBERED IN SEQUENCE FROM RIGHT TO LEFT AND FROM BOTTOM ROW TO TOP ROW.
- FOR EXTRA SIGNAL CONTACTS, USE PART NUMBER M80-0130005 FOR M80-718XX05 AND M80-0130001 FOR M80-718XX42.
- RECOMMENDED HAND CRIMP TOOL = M22520/2-01 WITH POSITIONER T5747.
- FOR EXTRA POWER CONTACTS, USE PART NUMBER M80-0550005 FOR M80-718XX05 AND M80-0550001 FOR M80-718XX01.
- RECOMMENDED HAND CRIMP TOOL = M22520/2-01 WITH POSITIONER Z80-058.
- CRIMP CONTACTS TO BE SUPPLIED LOOSE

CP	4	22.10.09	10534
NAME	ISS.	DATE	C/NOTE
APPROVED: C.PENROSE			
CHECKED: S.FLOWER			
DRAWN: M.A.TODD		CUSTOMER REF.:	
ASSEMBLY DRG:			

**HARWIN**

HARWIN USA  
TEL: 603 893 5376  
FAX: 603 893 5396  
mis@harwin.com

HARWIN Europe (UK)  
TEL: 023 9231 4545  
FAX: 023 9231 4590  
mis@harwin.co.uk

HARWIN Asia  
TEL: +65 6 779 4909  
FAX: +65 6 779 3868  
mis@harwin.com.sg

THIS DRAWING AND ANY INFORMATION OR DESCRIPTIVE MATTER SET OUT HEREON ARE CONFIDENTIAL AND COPYRIGHT PROPERTY OF THE HARWIN GROUP AND MUST NOT BE DISCLOSED, LOANED, COPIED OR USED FOR MANUFACTURING, TENDERING OR FOR ANY OTHER PURPOSE WITHOUT THEIR WRITTEN PERMISSION.

**TOLERANCES**  
 X. = ±1mm  
 X.X = ±0.25mm  
 X.XX = ±0.10mm  
 X.XXX = ±0.01mm  
 ANGLES = ±5°  
 UNLESS STATED

**MATERIAL:**  
 SEE ABOVE  
**FINISH:** SEE ABOVE  
**S/AREA:** mm<sup>2</sup>

**TITLE:** 3-ROW 2mm PITCH CONNECTOR FEMALE, SMALL BORE CRIMP + POWER CRIMP WITHOUT JACKSCREWS  
**DRAWING NUMBER:** M80-718XXX  
 SHT 2 OF 2