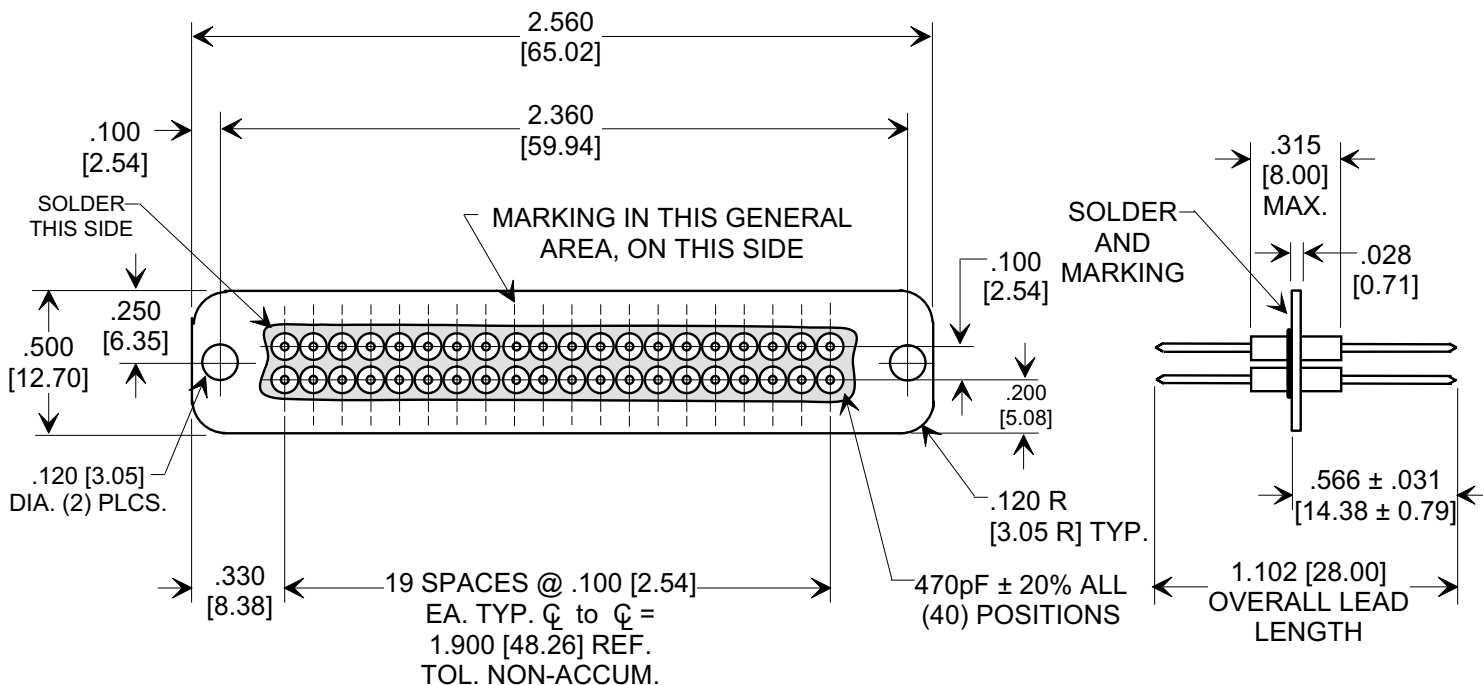
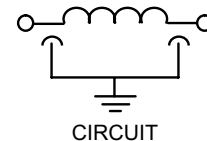
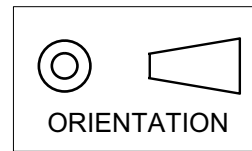


MARKETING SALES DRAWING
DIMENSIONS IN INCHES - DO NOT SCALE THIS DRAWING
DIMENSIONS IN METRIC - []

Electrical Testing
 per Tusonix standard
 test plans and Mil-Std-202
 Test Methods.



NOTES:

- PLATE: .028 \pm .002 [0.71 \pm 0.05], BRASS
 UNS-C21000/C27000, MATTE TIN PLATED.
 LEAD: .025 \pm .002 [0.63 \pm 0.05] DIA,
 PHOSPHOR BRONZE, GOLD PLATED.
- TUSONIX CATALOG CODE DESCRIPTION: 7922-2020-QA.
- MARKING: TUSONIX PRODUCTION PART
 NO. AND (4) DIGIT DATE CODE (YYWW).

376/846	100 VDC	5 A	9	18	22	36	43
CAP. (pF)	125° WORKING VOLTAGE	CURRENT V.D.C.	50 MHz	100 MHz	200 MHz	500 MHz	1 GHz
TYPICAL NO LOAD INSERTION LOSS (dB) AT 25°C PER MIL-STD-220							

X-2015 Rev-0 REVISION RECORD Original Release C.O. 20010808-2-09	0	--TOLERANCES-- Unless Otherwise Specified DECIMAL \pm .010 [0.25] ANGLES \pm 5° TUSONIX TUCSON, ARIZONA	Title		
	40 POSITION FILTER ASSEMBLY		Drawn S.M. 08-14-01	Scale 1.5 X	
	Approved T.C. 08-14-01		A	7940-009	