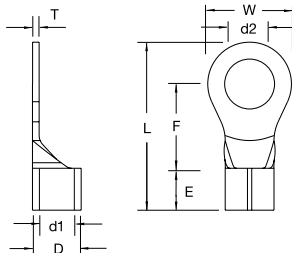


Non-Insulated Large Ring Terminals



- Brazed Seam
- Chamfered Barrel
- Internal Barrel Serrations

Catalog Number	Wire Range	Bolt Size (d2)	Dimension <small>inch mm</small>							
			W	F	L	E	D	d1	T	
K8-8R-D	8 A.W.G. 8 mm ¹	#8	.169 4.3	.315 8.0	.366 9.3	.846 21.5	.337 8.5	.283 7.2	.177 4.5	.047 1.2
K8-10R-D		#10	.209 5.3	.346 8.8	.429 10.5	.937 23.8				
K8-14R-D		1/4	.252 6.4	.472 12.0	.366 9.3	.937 23.8				
K8-516R-D		5/16	.331 8.4	.591 15.0	.543 13.8	1.161 29.8				
K8-38R-D		3/8	.413 10.5	.591 15.0	.543 13.8	1.161 29.8				
K8-12R-D		1/2	.512 13.0	.787 20.0	.591 15.0	1.319 33.5				
K6-10R-D	6 A.W.G. 14 mm ¹	#10	.209 5.3	.472 12.0	.524 13.3	1.173 29.8	.413 10.5	.354 9.0	.228 5.85	.059 1.5
K6-14R-D		1/4	.252 6.4	.472 12.0	.524 13.3	1.173 29.8				
K6-516R-D		5/16	.331 8.4	.630 16.0	.559 14.2	1.280 32.5				
K6-38R-D		3/8	.413 10.5	.630 16.0	.559 14.2	1.280 32.5				
K6-12R-W		1/2	.512 13.0	.866 22.0	.780 19.8	1.614 41.0				
K4-8R-W*	4 A.W.G. 22 mm ¹	#8	.169 4.3	.481 12.2	.594 15.1	1.307 33.2	.472 12.0	.453 11.5	.303 7.7	.067 1.7
K4-10R-W*		#10	.209 5.3	.481 12.2	.594 15.1	1.307 33.2				
K4-14R-W*		1/4	.252 6.4	.481 12.2	.594 15.1	1.299 33.0				
K4-516R-W*		5/16	.331 8.4	.650 16.5	.531 13.5	1.319 33.5				
K4-38R-W*		3/8	.413 10.5	.650 16.5	.531 13.5	1.319 33.5				
K4-12R-CC*		1/2	.512 13.0	.866 22.0	.776 19.7	1.661 42.5				
K2-10R-CC*	2 A.W.G. 38 mm ¹	#10	.209 5.3	.602 15.3	.685 17.4	1.535 39.0	.551 14.0	.524 13.3	.370 9.4	.071 1.8
K2-14R-CC*		1/4	.252 6.4	.602 15.3	.685 17.4	1.535 39.0				
K2-516R-CC*		5/16	.331 8.4	.602 15.3	.685 17.4	1.535 39.0				
K2-38R-CC*		3/8	.413 10.5	.602 15.3	.685 17.4	1.535 39.0				
K2-12R-CC*		1/2	.512 13.0	.866 22.0	.697 17.7	1.681 42.7				



Box Quantity: C=100; CC=200; (W)=250; (D)=500;

For mylar tape, replace box quantity with (T). Example: K6-10R-T.
See pages in back of catalog for complete tool information.
Tool and Die Selection Chart on page M42.

Terminal Material: Copper

UL File #E9809
*Pending UL Listing

Tools used with Non-Insulated Large Ring Terminals



TBM6S

KT-2500

For tooling information for nylon insulated large ring terminals, see page M37.