

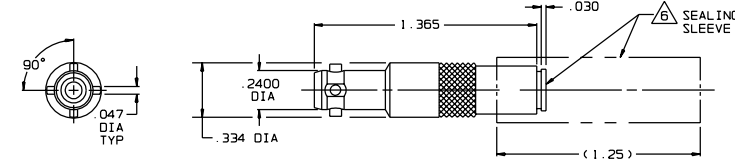
DISK # H3 DWG SIZE C DATA CONTAINED IN THIS DOCUMENT IS PROPRIETARY TO TROMPETER ELECTRONICS, INC. AND SHALL NOT BE DISCLOSED, COPIED OR USED FOR PROCUREMENT OR MANUFACTURE WITHOUT EXPRESS WRITTEN PERMISSION.

REVISONS			3-0132	SH 1	
REV	ED	DESCRIPTION	DWN	APPROVED	DATE
0	10050	PICTORIALLY CHANGED 1.00 FLARED SEALING SLEEVE TO STRAIGHT (1.25) LONG SEALING SLEEVE; GENERAL UPDATE	DKC		

TABLE 1			TABLE 2		
DASH NO	MODEL NO	CENTER CONTACT/INTMO CONTACT TYPE	CABLE GROUP NO	CABLES ACCOMMODATED	ASSEMBLE PER
-1	CJ450ACFLP	SOCKET/PIN	-201	M17-176-00002	TAI-162
-2	CJ450ACFLS	PIN/SOCKET	-202	TWC-78-1, TROMPETER	
-3	CJ450ACPP	SOCKET/PIN	-203	TWC-124-1A, TROMPETER	
-4	CJ450ACPS	PIN/SOCKET	-204	10602, RAYCHEM	
-5	CJ450ACRP	SOCKET/PIN	-205	TWAC-78-1F2, TROMPETER	
-6	CJ450ACRS	PIN/SOCKET	-206	782600130, RAYCHEM	
-7	CJ450ACWP	SOCKET/PIN	-208	202-3927, MICRODOT	
-8	CJ450ACWS	PIN/SOCKET	-209	202-3942, MICRODOT	
			-212	2524E0114, RAYCHEM	
			-217	GC875TM24H, GRUMMAN	
			-218	EP022188B, RAYCHEM	
			-219	2526D1114, RAYCHEM	
			-220	GC875RR1, GRUMMAN	
			-221	10614, RAYCHEM	
			-222	10613, RAYCHEM	
			-223	HMS2-1149, HUGHES	

INCH	MM
.005	0.13
.030	0.76
.047	1.19
.071	1.80
.240	6.10
.255	6.48
.334	8.48
1.25	31.75
1.365	34.67

FIG 1



-1-202 SHOWN

FIG 2

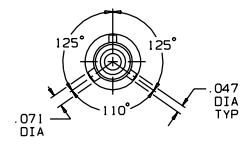


FIG 3

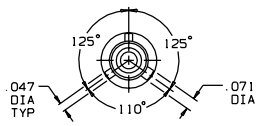
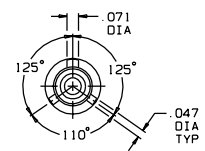


FIG 4



6. SEALING SLEEVE AND CRIMP BUSHING SUPPLIED LOOSE WITH EACH CONNECTOR EXCEPT NOT USED ON -205, -208 AND -223

5. EXAMPLE OF COMPLETE MODEL NO:
 BASIC MODEL NO (SEE TABLE 1) CJ450AC
 LUG POLARIZATION: FL = 4-LUG, FIG 1; P = 3-LUG, FIG 2; R = 3-LUG, FIG 3; W = 3-LUG, FIG 4
 CENTER & INTERMEDIATE CONTACT TYPE (SEE TABLE 2) P
 CABLE GROUP NO (SEE TABLE 2) -201

4. EXAMPLE OF COMPLETE PART NO:
 BASIC PART NO 3-0132
 DASH NO (LUG POLARIZATION, CENTER & INTMO CONTACT TYPE, SEE TABLE 1) -1
 CABLE GROUP NO (SEE TABLE 2) -201

3. CONCENTRIC TWINAX 4 PIECE ASSY FULL CRIMP NONINSULATED CABLE JACK SOCKET CENTER CONTACT AND PIN INTERMEDIATE CONTACT OR PIN CENTER CONTACT AND SOCKET INTERMEDIATE CONTACT

2. FINISH: TFS-11U (500 HOURS SALT SPRAY; NICKEL)

1. ALL DIM ARE IN INCHES

QTY	DESCRIPTION		PART NUMBER	ITEM
TOL UNLESS SPECIFIED .XX ± .03 .XXX ± .005 .XXXX ± .0010 ANGLES ± 0° 30'	TROMPETER ELECTRONICS, INC.		CJ450ACFLP/FLS, PP/PS, RP/RS, WP/WS	
DWN	DKC	12-2-92	MATERIAL	CODE IDENT
CHK			14949	DRAWING NO. 3-0132
ENGR				REV D
APPR			SCALE 2/1	DATE 2-8-88 SHEET 1 OF 2

NEXT ASSY