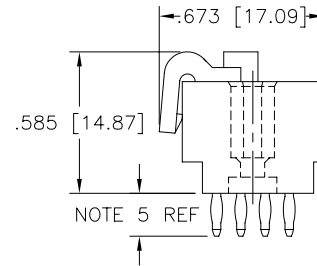
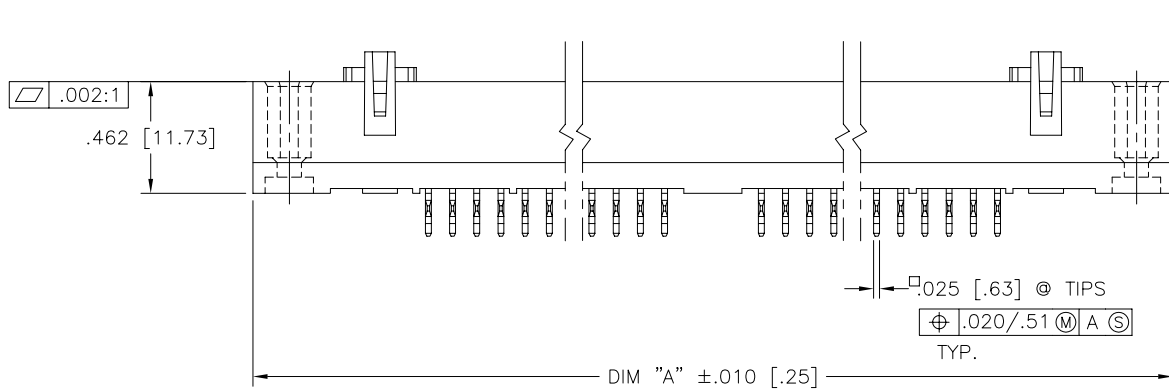
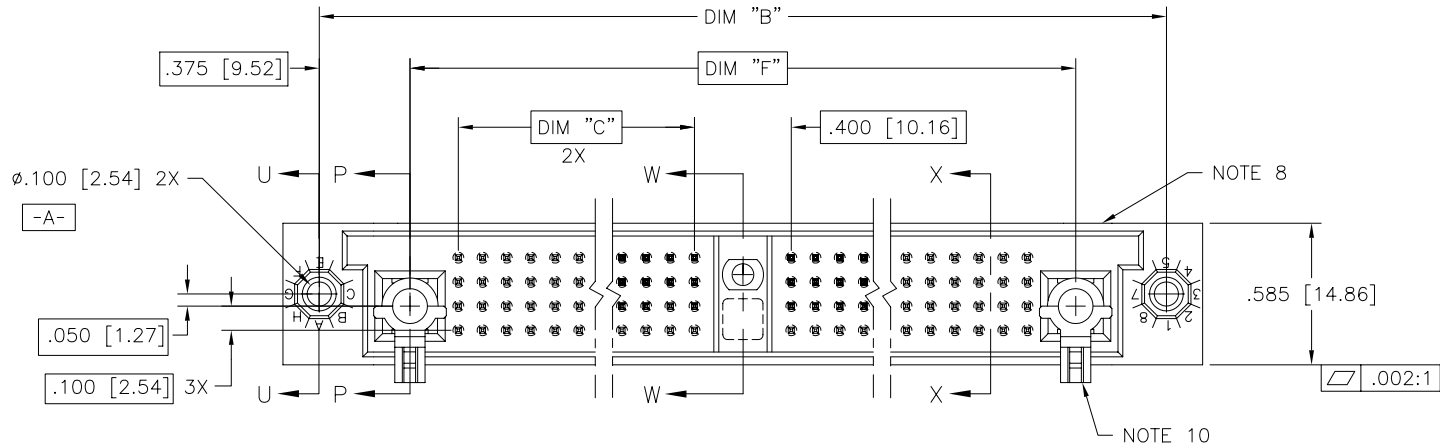


PRODUCT NUMBER  
SEE NOTE 1



mat'l. code NOTE 3		surface ISO 1302 ✓		tolerance ISO 406 ISO 1101		projection ⊕		product family HPC	
tolerances unless otherwise specified		angles		linear		INCH/MM		title	
A	V22185	RDS	5/11/92		.xx±.01/.3			4 ROW VERTICAL HEADER	
B	V40260	PDP	1/14/94		.xxx±.005/.13			PRESS FIT, 1 G.P., 2 P.P.	
C	V41237	GAH	8/17/94	0'±2'	.xxxx±.0020/.051	scale 1:1		dwg no	
D	V91067	DLW	5/20/99	dr	D.SHEAFFER	5/7/92		sheet 1 of 2 size	
E	V00273	JWS	2/1/00	engr	S.CLARK	5/11/92		50516	
F	M06-0260	MHT	7/07/06	chr	S.CLARK	5/11/92		A3	
sheet index		revision sheet		appd		S.CLARK		5/11/92	
		F F						type Product Customer Drawing	
1		2							



Copyright FCI

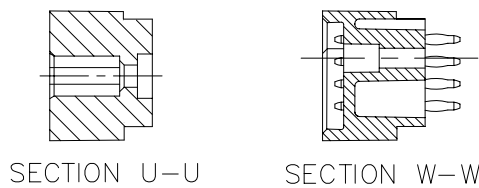
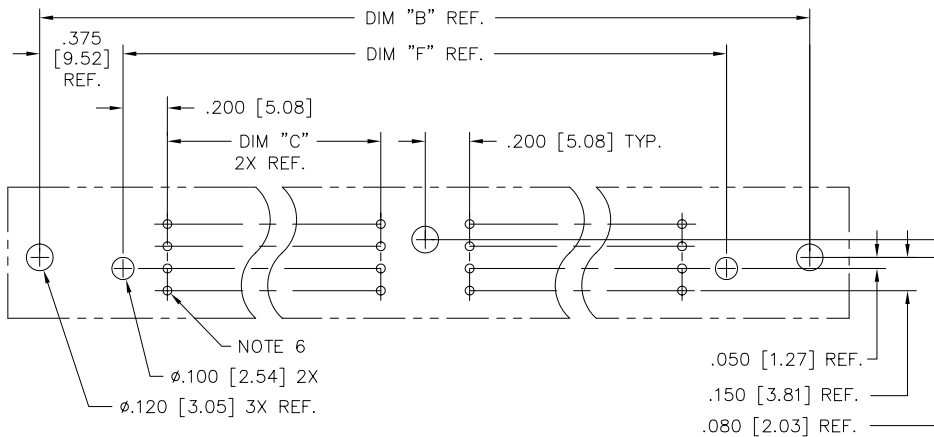
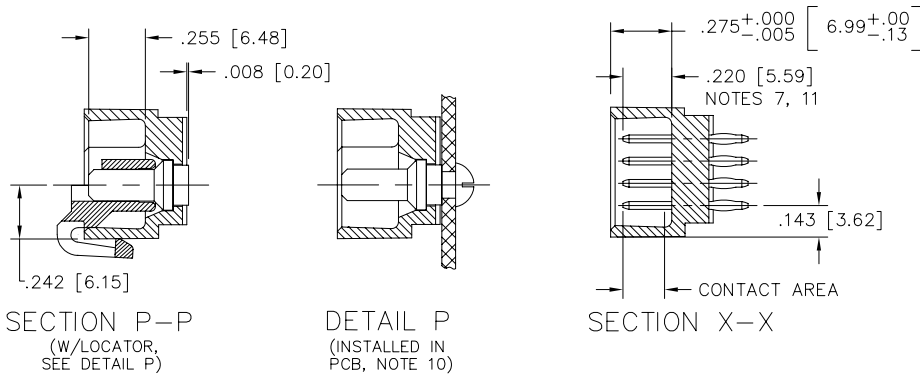
PRODUCT NUMBER	DIM.	LENGTH FORMULAS
SEE NOTE 1	DIM "A"	.100/2.54 x NO. OF COLUMNS +1.65/41.9
	DIM "B"	.100/2.54 x NO. OF COLUMNS +1.350/34.29
	DIM "C"	.100/2.54 x NO. OF COLUMNS DIVIDED BY 2 -.100/2.54
	DIM "F"	.100/2.54 x NO. OF COLUMNS +.600/15.24

NOTES:

① PRODUCT NUMBERING CODE:  
 50516 - X YYY Z  
 X — TAIL LENGTH (NOTE 5)  
 YYY — NO. OF POSITIONS (NOTE 2)  
 Z — PLATING (NOTE 4)  
 — BASE NUMBER

PRODUCT NUMBERING CODE FOR  
 SELECT LOAD PART NUMBERS:  
 50516 - XXYYY  
 XX — SEQUENCE NUMBER  
 ALWAYS "XX"  
 YYY — BASE NUMBER

- ② THIS PRODUCT IS CONFIGURED IN SIZES OF 20 thru 120 COLUMNS IN INCREMENTS OF TWO. i.e.: 20,22,24,26,.....118,120.
- ③ HOUSING MATERIAL: GLASS AND MINERAL FILLED HIGH TEMP. THERMOPLASTIC. FLAME RETARDANT PER UL94V-0. COLOR: BLACK.  
 PIN MATERIAL: PHOS BRONZE
- ④ PLATING CONTACT AREA OPTIONS:  
 A = 50u" Ni UNDER ALL WITH 30u" Au ON CONTACT AREA, SnPb ON PCB INTERFACE AND Au FLASH ON ALL OTHER AREAS.  
 C = 50u" Ni UNDER ALL WITH 30u" Au ON CONTACT AREA, SnPb ON PCB INTERFACE, 30u" ON TAIL SIDE CONTACT AREA, AND Au FLASH ON ALL OTHER AREAS.
- ⑤ TAIL LENGTH OPTIONS:  
 FOR PLATING OPTION "A":  
 A = .177/4.5  
 G = .250/6.35  
 FOR PLATING OPTION "C":  
 C = .533/13.54  
 D = .733/18.62
- ⑥  $\phi$ .0453/1.151 DRILLED HOLE PLATED WITH .0003/.007 MIN. SnPb OVER .001/.03 to .003/.08 Cu. PLATING TO ACHIEVE A  $\phi$ .040 $\pm$ .003/1.02 $\pm$ .08 HOLE.
- ⑦ TO ASSURE PROPER INSTALLATION: TOOLING, AS SPECIFIED IN INSTRUCTION MANUAL 155915-001 MUST BE USED. PIN MATING LENGTH WILL BE  $\pm$ .002/.05 AFTER INSTALLATION.
- ⑧ MANUFACTURERS NAME, PART NUMBER AND LOT CODE TO APPEAR ON THIS SURFACE PER BUS-12-108.
9. FOR DOCUMENTATION MENU, SEE BUS-01-057.
- ⑩ POWER PIN LOCATOR (REF. 50234) TO BE REMOVED AFTER INSTALLATION.
- ⑪ REFERENCE 50805 FOR F.M.L.B. OPTIONS AND WORKSHEET.



mat'l. code		surface ISO 1302 <input checked="" type="checkbox"/>	tolerance ISO 406 ISO 1101	projection 	product family HPC
ltr	ecn	no	dr	date	tolerances unless otherwise specified
F					angles linear .xx $\pm$ .01/.3
					0'±2' .xxx $\pm$ .005/.13
					.xxx $\pm$ .0020/.05
		dr	D.SHEAFFER	5/7/92	INCH/MM
		enr	S.CLARK	5/11/92	scale 1:1
		chr	S.CLARK	5/11/92	dwg no
		appd	S.CLARK	5/11/92	sheet 2 of 2 size
sheet index	revision sheet				50516 A3
					type Product Customer Drawing