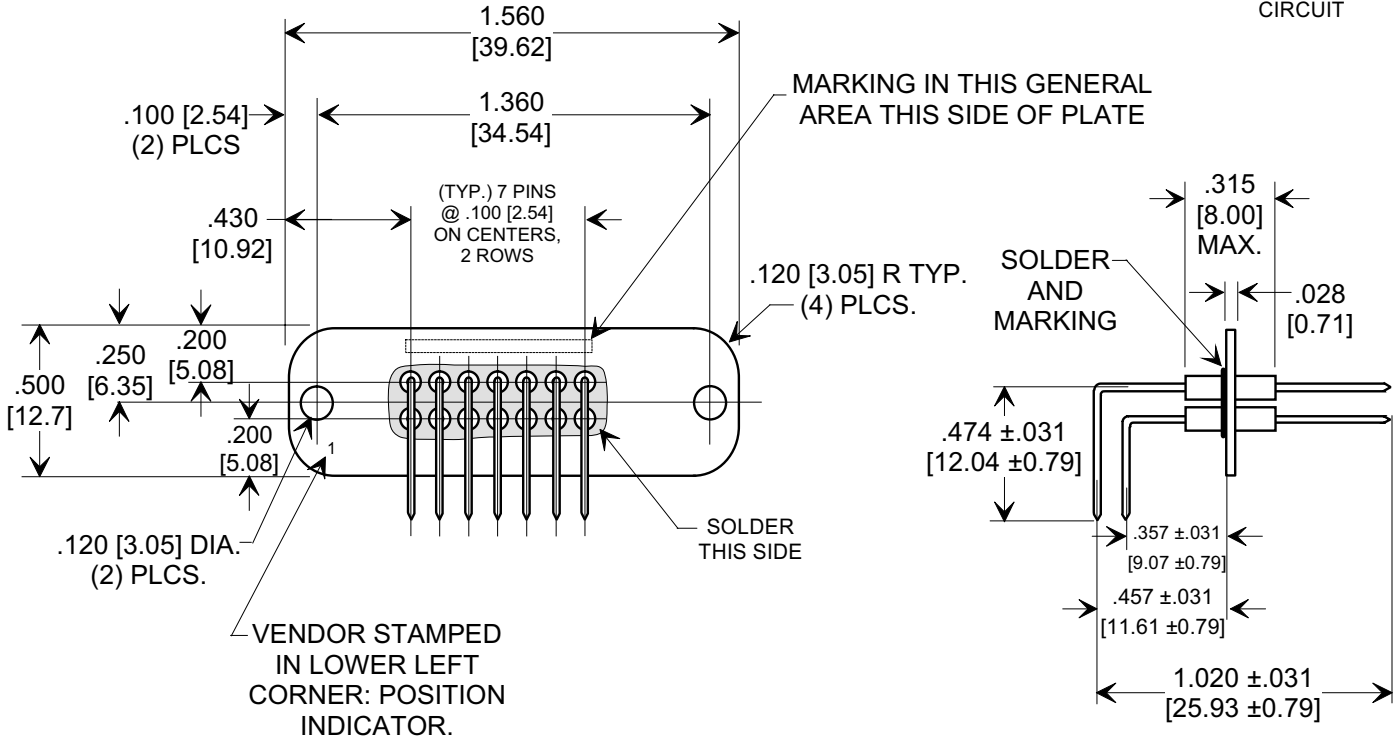
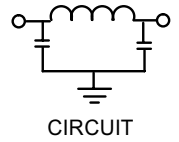
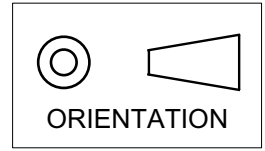


MARKETING SALES DRAWING

DIMENSIONS IN INCHES - DO NOT SCALE THIS DRAWING
 DIMENSIONS IN METRIC - []

Electrical Testing
 per Tusonix standard
 test plans and Mil-Std-202
 Test Methods.



NOTE:

- MATERIALS:
 PLATE: .028" ±.003[0.71 ±0.08] COPPER ALLOY, MATTE TIN FINISH.
 LEADS: .025"±.002[0.63 ±0.05] DIA. COPPER ALLOY, GOLD OVER NICKEL FINISH.
- MARKING TO BE TUSONIX TRADEMARK, PRODUCTION PART NUMBER AND DATE CODE.
- TUSONIX CATALOG CODE: 7912-0707-VC REFERENCE.

Cx (pF)	CIR-CUIT	WVDC (+125°C)	IR (MIN.)	DWV 2 SEC.	CURRENT Idc (A)	TYPICAL NO LOAD INSERTION LOSS (dB) @ 25° C PER MIL-STD-220							
						5 MHz	10 MHz	20 MHz	50 MHz	100 MHz	200 MHz	500 MHz	1 GHz
5000/10000	π	100	10 G Ω	250 VDC	5	7	14	27	41	53	66	70	70

REVISION RECORD Original Release C.O. WAS SK 7446-083 L.E. 02-19-03 20030217-2-05	0	--TOLERANCES-- Unless Otherwise Specified DECIMAL ± .010 [0.25] ANGLES ±	Title FILTER PLATE 14 POSITION (90° LEFT)	Drawn S.M. 02-11-03 Scale 1.5 X			
	Approved B.Mc. 02-11-03						
	TUSONIX TUCSON, ARIZONA				A	7914-001	

X-2015 Rev-0