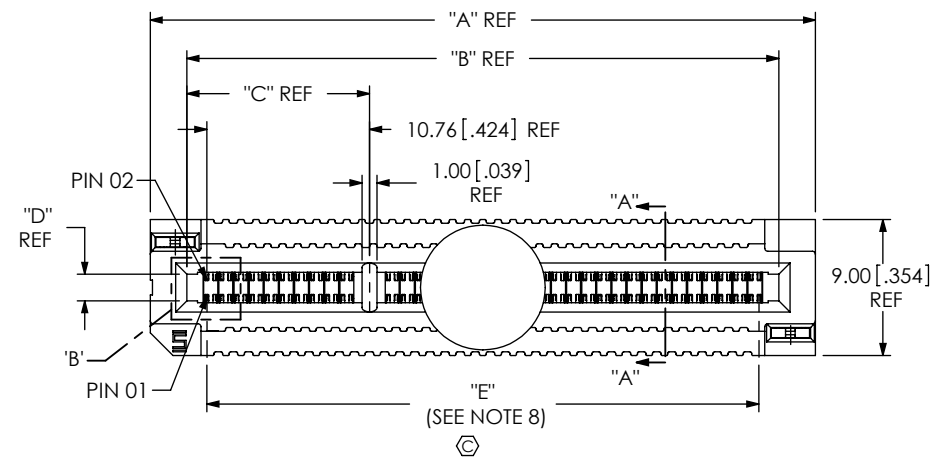


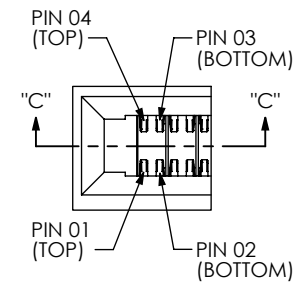
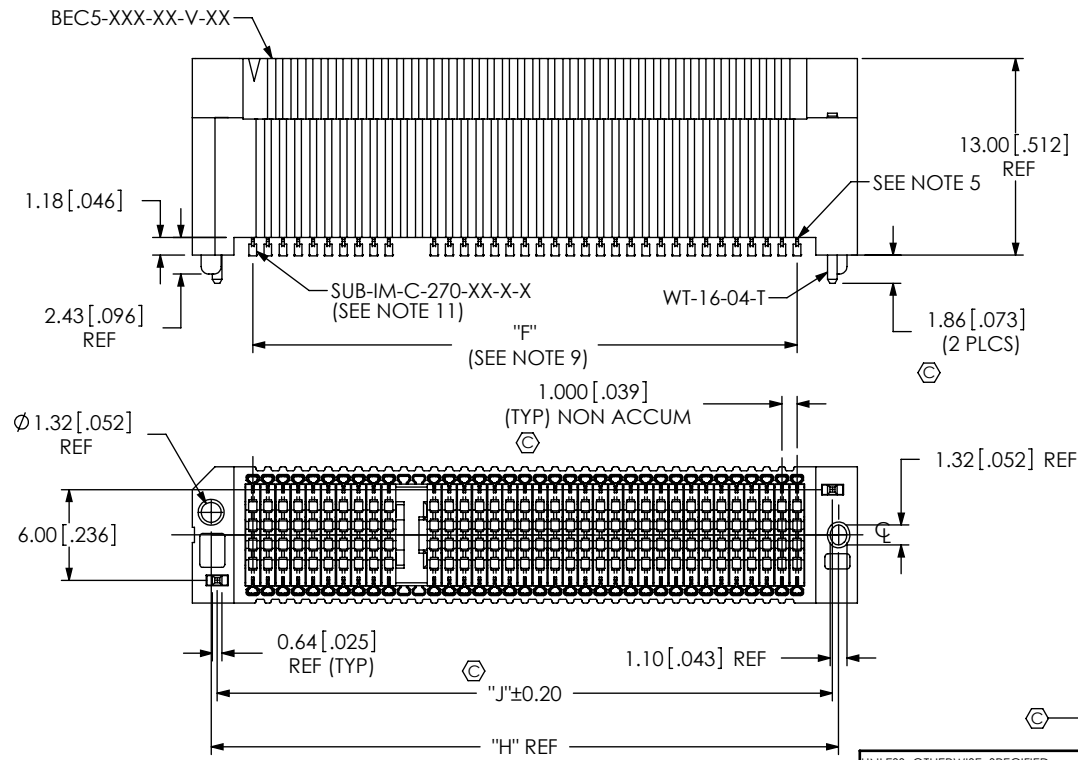
DESIGNED & DIMENSIONED
IN MILLIMETERS [INCHES]

BEC5-XXX-XX-X-X-V-A-XX-TR

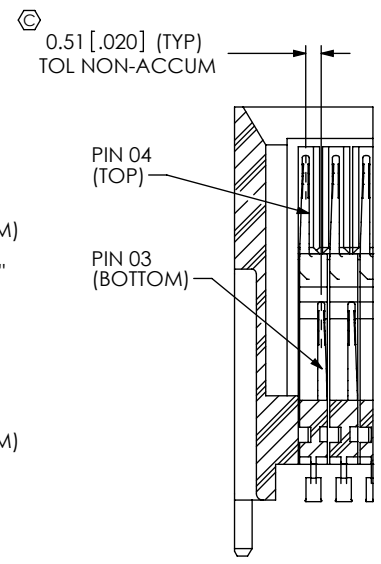
DO NOT
SCALE FROM
THIS PRINT



- No OF POSITIONS
-060, -080, -100, -120, -140,
-160, -180, -200
(SEE NOTE 6)
CARD THICKNESS
-02 (1.57mm [.062] PCB)
(USE SUB-IM-C-270-02-X-X)
-03 (2.36 mm [.093] PCB)
(USE SUB-IM-C-270-03-X-X)
- PACKAGING
-TR: TAPE & REEL
- OPTIONS
-K: POLYIMIDE FILM
(SEE FIG. 2, SHT 2)
- ALIGNMENT PINS
-A: ALIGNMENT PINS
- VERTICAL
- PLATING SPECIFICATION
-L: 10 μ" SELECTIVE GOLD, MATTE TIN ON TAIL
(USE SUB-IM-C-270-XX-L-X)
-S: 30 μ" SELECTIVE GOLD, MATTE TIN ON TAILS
(USE SUB-IM-C-270-XX-S-X)
- SOLDER COMPOSITION & STYLE
-1: 63% TIN / 37% LEAD CHARGE TAIL
(USE SUB-IM-C-270-XX-X-1)
-2: 96.5% TIN / 3.5% SILVER
LEAD FREE CHARGE TAIL
(USE SUB-IM-C-270-XX-X-2)



DETAIL 'B'
SCALE 4:1



SECTION "C"- "C"
SCALE 4:1

- NOTES:
- ⊕ REPRESENTS A CRITICAL DIMENSION.
 - MINIMUM PUSHOUT FORCE: 2.22N [.5 LB].
 - PARTS TO BE PACKAGED IN TAPE AND REEL AS STANDARD
 - FOR QUANTITIES UP TO 49 PIECES, NO LEADER, TRAILER OR REEL WILL BE SUPPLIED
FOR QUANTITIES OF 50-124, NO LEADER OR TRAILER WILL BE SUPPLIED
 - SOLDER CRIMP VOLUME IS .20058 MM³ (0.000012691 IN³)
 - NUMBER OF POSITIONS EQUALS TOTAL NUMBER OF CIRCUITS.
 - THESE INSIDE EDGES ARE NOT TO APPEAR IN THE WINDOW WHEN VIEWED FROM DIRECTLY ABOVE.
 - DIMENSION TAKEN BETWEEN TOP AND BOTTOM PINS.
 - CHECK TO THE LEAD AND NOT THE SOLDER CRIMP.
 - SEE DOCUMENT CO-OP-WI-3001-M FOR ADDITIONAL INSTRUCTION.
 - TO CALCULATE NUMBER OF SUBS NEEDED TAKE THE NUMBER OF POSITIONS AND DIVIDE BY 4.

FIG. 1
BEC5-140-02-X-X-V-A SHOWN

UNLESS OTHERWISE SPECIFIED, DIMENSIONS ARE IN MILLIMETERS [INCHES]	PROPRIETARY NOTE THIS DOCUMENT CONTAINS INFORMATION CONFIDENTIAL AND PROPRIETARY TO SAMTEC, INC. AND SHALL NOT BE REPRODUCED OR TRANSFERRED TO OTHER DOCUMENTS OR DISCLOSED TO OTHERS OR USED FOR ANY PURPOSE OTHER THAN THAT WHICH IT WAS OBTAINED WITHOUT THE EXPRESSED WRITTEN CONSENT OF SAMTEC, INC.	 520 PARK EAST BLVD, NEW ALBANY, IN 47150 PHONE: 812-944-6733 FAX: 812-948-5047 e-Mail info@SAMTEC.com code 55322
	TOLERANCES ARE: DECIMALS ANGLES X.X: ±0.3 [.01] 2° X.XX: ±0.13 [.005] X.XXX: ±0.051 [.0020]	
MATERIAL: DO NOT SCALE DRAWING SHEET SCALE: 2:1 INSULATOR: LCP, COLOR BLACK CONTACT: BeCu	DESCRIPTION: BI-LEVEL EDGE CARD ASSEMBLY	
	DWG. NO. BEC5-XXX-XX-X-X-V-A-XX-TR	
	BY: M MURILLO 1/16/2009	SHEET 1 OF 2

REVISION E

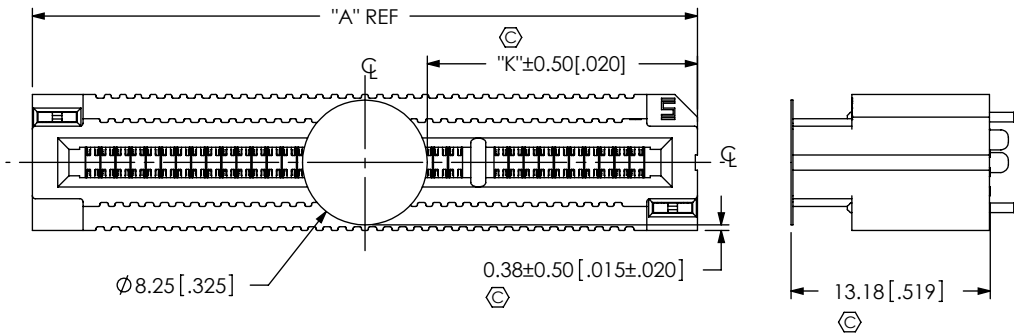
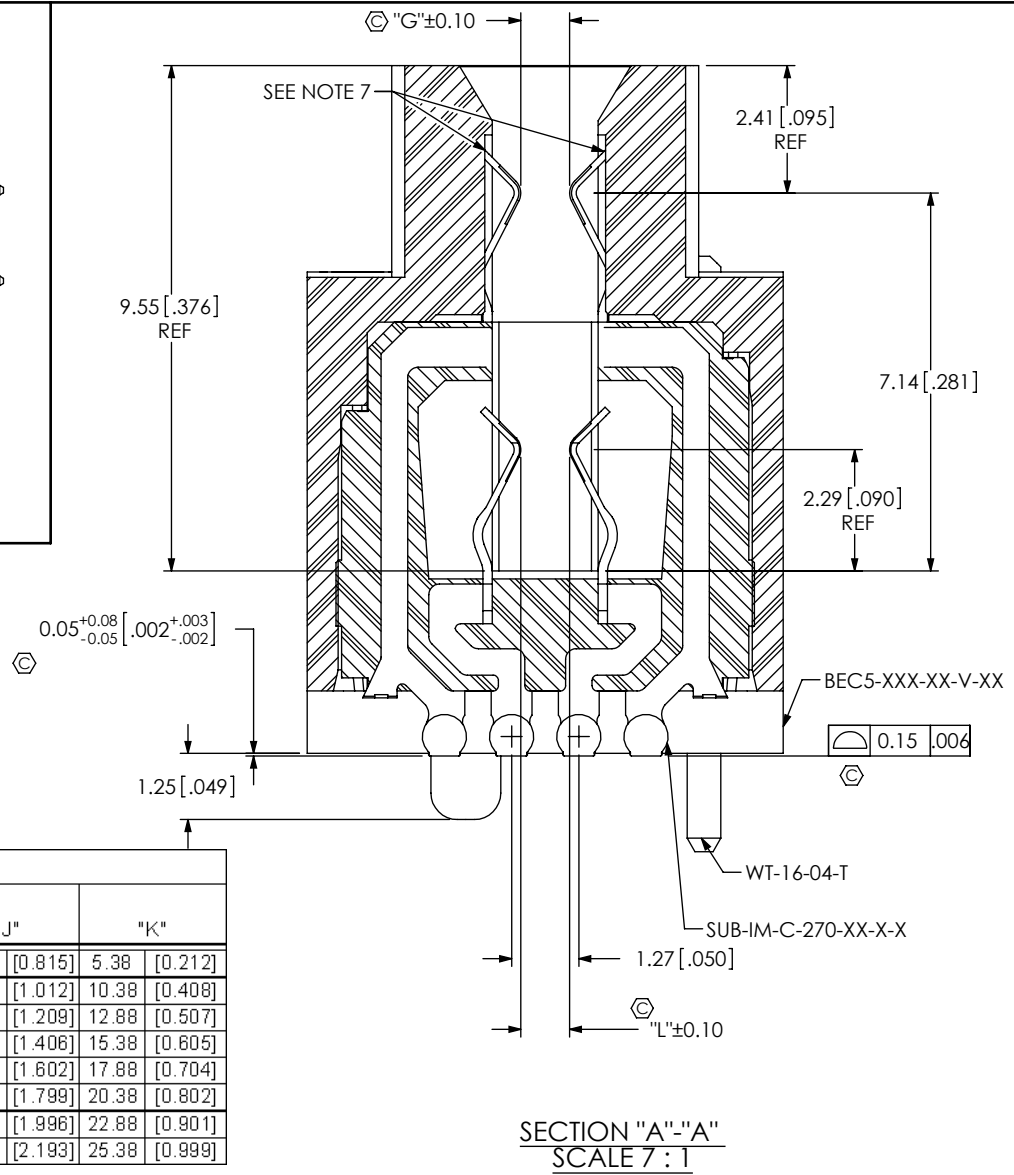


FIG. 2
-K: POLYIMIDE PAD
(USE K-DOT-325-.450-.005)
(BEC5-140-02-X-X-V-A-K SHOWN)



SECTION "A"- "A"
SCALE 7:1

TABLE 1

NO OF POSITIONS	"A"	"B"	"C"	"E"	"F"	"H"	"J"	"K"
-060	24.00 [0.945]	19.15 [0.754]	7.08 [0.279]	16.50 [0.650]	16.00 [0.630]	21.50 [0.846]	20.70 [0.815]	5.38 [0.212]
-080	29.00 [1.142]	24.15 [0.951]	7.08 [0.279]	21.50 [0.846]	21.00 [0.827]	26.50 [1.043]	25.70 [1.012]	10.38 [0.408]
-100	34.00 [1.339]	29.15 [1.148]	7.08 [0.279]	26.50 [1.043]	26.00 [1.024]	31.50 [1.240]	30.70 [1.209]	12.88 [0.507]
-120	39.00 [1.535]	34.15 [1.344]	12.08 [0.475]	31.50 [1.240]	31.00 [1.220]	36.50 [1.437]	35.70 [1.406]	15.38 [0.605]
-140	44.00 [1.732]	39.15 [1.541]	12.08 [0.475]	36.50 [1.437]	36.00 [1.417]	41.50 [1.634]	40.70 [1.602]	17.88 [0.704]
-160	49.00 [1.929]	44.15 [1.738]	14.58 [0.574]	41.50 [1.634]	41.00 [1.614]	46.50 [1.831]	45.70 [1.799]	20.38 [0.802]
-180	54.00 [2.126]	49.15 [1.935]	16.58 [0.653]	46.50 [1.831]	46.00 [1.811]	51.50 [2.028]	50.70 [1.996]	22.88 [0.901]
-200	59.00 [2.323]	54.15 [2.132]	18.58 [0.731]	51.50 [2.028]	51.00 [2.008]	56.50 [2.224]	55.70 [2.193]	25.38 [0.999]

TABLE 2

PLATING	LEAD STYLE	"BODY CALLOUT"	"TERMINAL WAFER"	"WELD TAB"
-S	-02	BEC5-XXX-02-V-XX	SUB-IM-C-270-02-X-X	WT-16-04-T
-L	-03	BEC5-XXX-03-V-XX	SUB-IM-C-270-03-X-X	WT-16-04-T

TABLE 3

LEAD STYLE	"D"	"G" (TOP GAP)	"L" (BOTTOM GAP)
-02	1.75 [0.069]	.75 [0.030]	.92 [0.036]
-03	2.65 [0.104]	1.68 [0.067]	1.72 [0.068]

PROPRIETARY NOTE

THIS DOCUMENT CONTAINS INFORMATION CONFIDENTIAL AND PROPRIETARY TO SAMTEC, INC. AND SHALL NOT BE REPRODUCED OR TRANSFERRED TO OTHER DOCUMENTS OR DISCLOSED TO OTHERS OR USED FOR ANY PURPOSE OTHER THAN THAT WHICH IT WAS OBTAINED WITHOUT THE EXPRESSED WRITTEN CONSENT OF SAMTEC, INC.

DO NOT SCALE DRAWING

SHEET SCALE: 2:1



520 PARK EAST BLVD. NEW ALBANY, IN 47150
PHONE: 812-944-6733 FAX: 812-948-5047
e-Mail: info@SAMTEC.com code 55322

DESCRIPTION:
BI-LEVEL EDGE CARD ASSEMBLY

DWG. NO.
BEC5-XXX-XX-X-X-V-A-XX-TR

BY: M MURILLO 1/16/2009 SHEET 2 OF 2