

Fig. 1

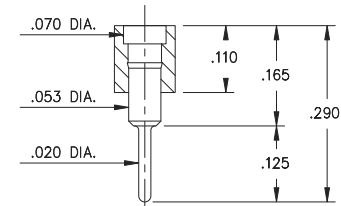


Fig. 2

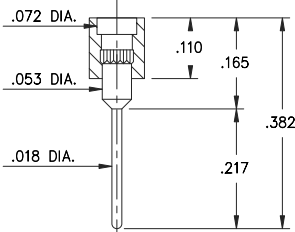


Fig. 3

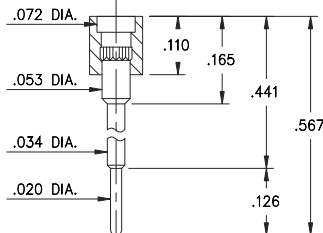


Fig. 4

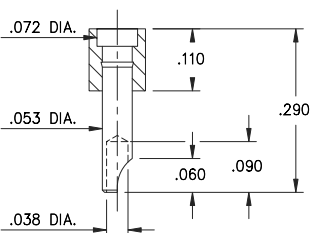


Fig. 5

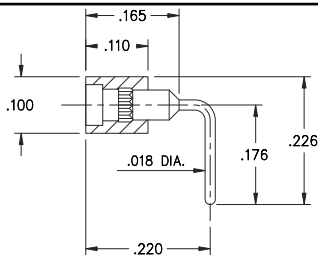
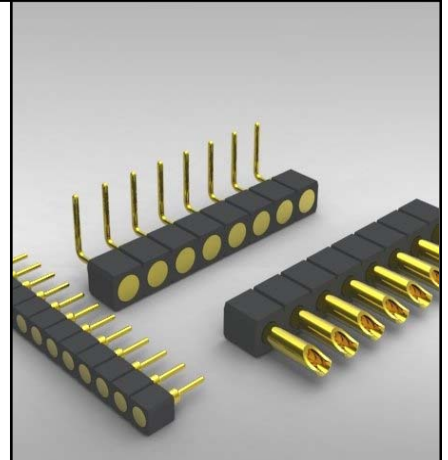


Fig. 6

- Series 319, 330 and 399 single row strips may be cut to any length.
- Spring Target connectors present a large flat surface for making tangent connections to our standard .042" dia spring pin plungers. The target connectors provide an excellent gold plated conductive path back to the board mounted spring pin connector.
- Target connectors use MM #1938, #1940, #1941, #1942 and #3024 pins. See page 185 for details.
- Insulators are high temp. thermoplastic.



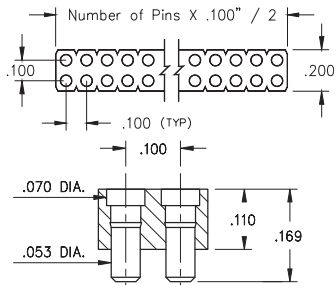
Ordering Information

Fig. 1	Series 319...041	SMT w/ Alignment Pins
	319-10-1__-30-041000	Specify # of pins → 01-64
Fig. 2	Series 319...001	Standard Solder Tails
	319-10-1__-00-001000	Specify # of pins → 01-64
Fig. 3	Series 319...002	Long Solder Tails
	319-10-1__-00-002000	Specify # of pins → 01-64
Fig. 4	Series 319...005	Elevated Solder Tails
	319-10-1__-00-005000	Specify # of pins → 01-64
Fig. 5	Series 330...240	Solder Cups
	330-10-1__-10-240000	Specify # of pins → 01-64
Fig. 6	Series 399...008	Right Angle Solder Tails
	399-10-1__-10-008000	Specify # of pins → 01-64

For Electrical, Mechanical & Environmental Data, See pg. 4

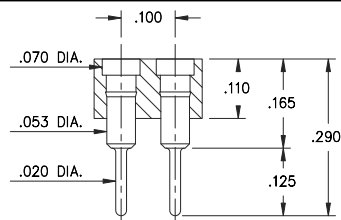


PLATING CODE =	10			
Pin Plating	10 μ" Au			

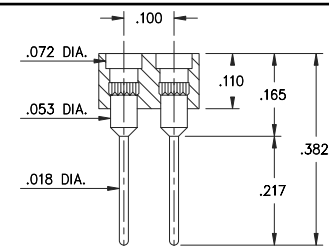


Coplanarity .005". For Pin Counts >20 positions consult Technical Support.

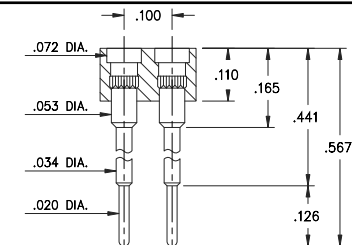
**Fig. 1**



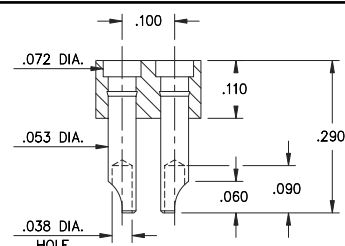
**Fig. 2**



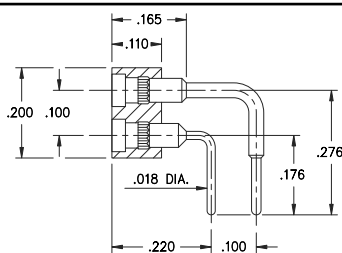
**Fig. 3**



**Fig. 4**

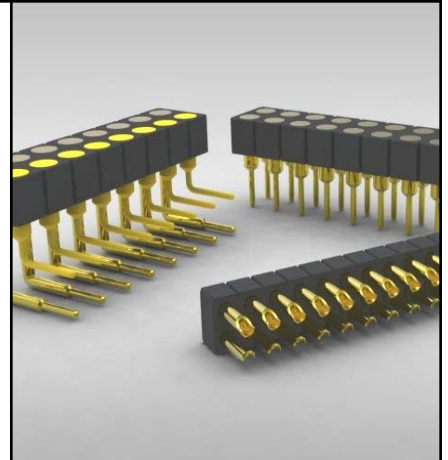


**Fig. 5**



**Fig. 6**

- Series 419, 430 and 499 double row strips may be cut to any length.
- Spring Target connectors present a large flat surface for making tangent connections to our standard .042" dia spring pin plungers. The target connectors provide an excellent gold plated conductive path back to the board mounted spring pin connector.
- Target connectors use MM #1938, #1940, #1941, #1942 and #3024 pins. See page 185 for details.
- Insulators are high temp. thermoplastic.



**Ordering Information**

<b>Fig. 1</b>	<b>Series 419...041</b> <b>Surface Mount</b>
	419-10-2__-30-041000 Specify # of pins → 04-64
<b>Fig. 2</b>	<b>Series 419...001</b> <b>Standard Solder Tails</b>
	419-10-2__-00-001000 Specify # of pins → 04-64
<b>Fig. 3</b>	<b>Series 419...002</b> <b>Long Solder Tails</b>
	419-10-2__-00-002000 Specify # of pins → 04-64
<b>Fig. 4</b>	<b>Series 419...005</b> <b>Elevated Solder Tails</b>
	419-10-2__-00-005000 Specify # of pins → 04-64
<b>Fig. 5</b>	<b>Series 430...240</b> <b>Solder Cups</b>
	430-10-2__-10-240000 Specify # of pins → 04-64
<b>Fig. 6</b>	<b>Series 499...008</b> <b>Right Angle Solder Tails</b>
	499-10-2__-10-008000 Specify # of pins → 04-64

*For Electrical,  
Mechanical & Environmental  
Data, See pg. 4*



PLATING CODE =	<b>10</b>		
Pin Plating	10 μ" Au		